



REPUBLIC OF TURKEY
PRIME MINISTRY

Undersecretariat of Treasury

PUBLIC DEBT MANAGEMENT REPORT

2011 Financing Program	1
Budget Realizations	2
Treasury Cash Balance	4
Domestic Debt	5
External Debt	9
Debt Stock	13
Treasury Guaranteed External Debt	19
Treasury Non-Guaranteed External Debt	22
Treasury Receivables	23
Developments in the Credit Rating of Turkey	26
Calendar	27
Public Finance Statistics	28
ANNEX	29

No: 71

JUNE 2011

**REPUBLIC OF TURKEY
PRIME MINISTRY**

UNDERSECRETARIAT OF TREASURY

**PUBLIC DEBT MANAGEMENT
REPORT**



JUNE 2011



2011 FINANCING PROGRAM

PROGRAM AND REALIZATIONS ⁽¹⁾

(Billion TL)	Program	Realization
	January - December	January-May
I-TOTAL DEBT SERVICE	152.8	80.9
Domestic Debt Service	135.0	73.1
Principal	99.3	55.8
Interest	35.8	17.3
External Debt Service	17.8	7.8
Principal	11.0	4.5
Interest	6.8	3.3
II-FINANCING	152.8	80.9
Total Borrowing	131.7	70.4
External Borrowing	12.5	5.2
Domestic Borrowing	119.1	65.2
Other Financing (2)	21.1	10.5
Total Domestic Roll-Over Ratio	%88	%89.2
Memo (Billion TL)		
Net Borrowing	21.4	10.2
Net Domestic Borrowing	19.9	9.4
Net External Borrowing	1.6	0.7

(1) Cash based.

(2) The cash primary balance, privatization revenues, receipts from on lending and guaranteed debt, receipts from SDIF, use of cash account and FX changes are shown under other financing item.

STRATEGIC BENCHMARKS

- ✓ To make domestic cash borrowing mainly in TL
- ✓ To use fixed rate TL instruments as the major source of domestic cash borrowing and decrease the share of debt which has interest rate refixing period less than 12 months
- ✓ To increase the average maturity of domestic cash borrowing taking market conditions into consideration and decrease the share of debt maturing within 12 months
- ✓ To keep a certain level of cash reserve in order to reduce the liquidity risk associated with cash and debt management

BUDGET REALIZATION

CENTRAL GOVERNMENT BUDGET REALIZATION AND FINANCING

(Million TL)	2010	2011					
	Jan-May	January	February	March	April	May	Total
Central Government Revenues	102,617	23,499	24,556	20,674	23,523	27,133	119,385
Tax Revenues	82,783	19,765	21,093	16,593	19,287	23,288	100,025
-Direct Taxes	28,439	5,946	9,249	4,095	5,036	9,043	33,369
-Indirect Taxes	54,344	13,819	11,844	12,498	14,250	14,244	66,655
Nontax Revenues	19,834	3,734	3,463	4,081	4,237	3,845	19,360
Central Government Expenditures	112,600	22,494	23,568	26,792	22,467	24,298	119,618
Personnel Expenditure	26,514	7,249	5,787	5,738	6,023	5,927	30,723
Social Security Contributions	4,484	1,316	1,006	987	997	1,006	5,311
Purchase of Goods and Services	8,556	901	1,741	2,131	2,593	2,317	9,684
Interest Payments	24,216	3,803	6,171	3,994	2,841	4,064	20,874
Current Transfers	42,126	8,928	8,087	12,539	7,918	8,009	45,481
Capital Expenditure	3,638	72	366	1,061	1,564	1,764	4,827
Capital Transfers	901	76	95	94	234	855	1,355
Lending	2,164	147	315	248	297	357	1,363
Contingencies	0	0	0	0	0	0	0
Central Government Primary Balance	14,233	4,809	7,159	-2,123	3,897	6,899	20,641
Central Government Balance	-9,984	1,005	988	-6,118	1,056	2,835	-233
Deferred Payments	-1,149	-2,509	2,203	-584	-612	118	-1,384
Other Deferred Payments	-224	2,684	884	739	-596	-1	3,710
Advances	1,552	4,039	-1,743	-432	-82	-64	1,718
Central Government Cash Balance	-9,804	5,219	2,333	-6,395	-234	2,888	3,811
Central Government Budget Financing	9,804	-5,219	-2,333	6,395	234	-2,888	-3,811
Borrowing (Net)	17,383	175	3,490	5,943	1,419	116	11,144
Foreign Borrowing (Net)	6,707	-137	-651	3,346	-756	-303	1,500
-Receipts	10,542	1,628	0	3,869	235	223	5,954
-Payments	-3,834	-1,765	-651	-522	-991	-526	-4,455
Domestic Borrowing (Net)	10,676	312	4,141	2,597	2,175	419	9,645
-TL Denominated T-Bills	-702	-1,735	0	-1,215	0	0	-2,950
Receipts	8,018	0	0	725	0	0	725
Payments	-8,720	-1,735	0	-1,940	0	0	-3,675
-TL Denominated G-Bonds	14,331	2,047	4,141	3,812	2,175	1,322	13,498
Receipts	65,044	25,419	16,015	3,812	7,904	11,558	64,708
Payments	-50,713	-23,372	-11,873	0	-5,730	-10,236	-51,211
-FX Denominated G-Bonds	-2,953	0	0	0	0	-903	-903
Receipts	2,807	0	0	0	0	0	0
Payments	-5,760	0	0	0	0	-903	-903
Net Lending (-)	-99	55	21	42	-87	32	64
Lending	284	100	23	52	35	41	252
Repayment (-)	383	45	2	10	122	9	188
Privatization Revenue	0	0	0	0	0	0	0
SDIF Revenue Surplus	418	1	249	1	1	81	332
Currency/Deposit And Other Transactions	-8,095	-5,340	-6,051	493	-1,272	-3,053	-15,223

GENERAL BUDGET FINANCING

(Million TL)	2010	2011					
	Jan-May	January	February	March	April	May	Total
General Budget Balance	-11,028	1,167	-1,720	-5,337	211	4,742	-937
Deferred Payments	-885	-2,553	2,488	-561	-646	-30	-1,302
Other Deferred Payments	-299	3,180	98	217	-92	68	3,471
Advances	1,464	3,808	-1,746	-208	-184	-96	1,574
General Budget Cash Balance	-10,747	5,601	-880	-5,889	-710	4,684	2,806
General Budget Financing	10,747	-5,601	880	5,889	710	-4,684	-2,806
Borrowing (Net)	17,383	175	3,490	5,943	1,419	116	11,144
Foreign Borrowing (Net)	6,707	-137	-651	3,346	-756	-303	1,500
-Receipts	10,542	1,628	0	3,869	235	223	5,954
-Payments	-3,834	-1,765	-651	-522	-991	-526	-4,455
Domestic Borrowing (Net)	10,676	312	4,141	2,597	2,175	419	9,645
-TL Denominated T-Bills	-702	-1,735	0	-1,215	0	0	-2,950
Receipts	8,018	0	0	725	0	0	725
Payments	-8,720	-1,735	0	-1,940	0	0	-3,675
-TL Denominated G-Bonds	14,331	2,047	4,141	3,812	2,175	1,322	13,498
Receipts	65,044	25,419	16,015	3,812	7,904	11,558	64,708
Payments	-50,713	-23,372	-11,873	0	-5,730	-10,236	-51,211
-FX Denominated G-Bonds	-2,953	0	0	0	0	-903	-903
Receipts	2,807	0	0	0	0	0	0
Payments	-5,760	0	0	0	0	-903	-903
Net Lending (-)	-118	54	21	42	-87	7	37
Lending	286	100	23	52	35	41	252
Repayment (-)	405	46	2	10	122	34	215
SDIF Revenue Surplus	0	0	0	0	0	0	0
Privatization Revenue	418	1	249	1	1	81	332
Currency/Deposit And Other Transactions	-7,172	-5,724	-2,838	-13	-796	-4,875	-14,245

PROGRAM DEFINED CENTRAL GOVERNMENT BUDGET PRIMARY BALANCE⁽¹⁾

(Million TL)	2010	2011					
	Jan-May	January	February	March	April	May	Total
1. Central Government Budget Revenues (Public Accounts Bulletin)	102,617	23,499	24,556	20,674	23,523	27,133	119,385
a. Privatization Proceeds (-)	0	588	314	309	60	0	1,271
b. Interest Receipts (-)	1,214	776	72	35	492	102	1,477
c. CBT Profit & Revaluation (-)	1,833	0	0	0	857	0	857
d. Dividend Payments of State Banks (-)	0	0	0	818	0	0	818
e. Special Revenues of the Turkish Mint (-)	70	14	17	21	19	12	83
f. Net Lending to CGS (-)	-70	0	0	0	0	0	0
g. Sales of Immovables (-)	0	0	0	0	0	0	0
h. Unemployment Insurance Fund Transfer (GAP) (-)	988	97	41	147	65	81	432
2. Central Government Budget Revenues (Program Definition) (1-a-b-c-d-e-f-g-h)	98,581	22,023	24,112	19,344	22,030	26,938	114,447
3. Central Government Primary Expenditures (Public Accounts Bulletin)	71,494	18,691	17,397	22,797	19,626	20,234	98,744
i. Risk Account (-)	0	0	0	0	0	0	0
j. Social Security Transfers (Cash - Accrual Difference) (+)	-60	-515	515	-2	2	-62	-62
k. Net Lending to CGS (+)	0	0	0	0	0	0	0
4. Central Government Primary Expenditure (Program Definition) (3-i+j+k)	71,434	18,176	17,912	22,795	19,628	20,172	98,682
Primary Balance (Public Accounts Bulletin) (1-3)	31,122	4,809	7,159	-2,123	3,897	6,899	20,641
Primary Balance (Program Definition) (2-4)	27,147	3,847	6,200	-3,451	2,402	6,766	15,765

(1) Provisional

TREASURY CASH BALANCE

CASH BALANCE REALIZATIONS ⁽¹⁾

(Million TL)	2010	2011					
	Jan-May	January	February	March	April	May	Total
1. REVENUES	240,402	21,879	19,019	24,188	23,892	26,520	115,498
2. EXPENDITURES	282,078	22,633	24,449	26,713	22,662	23,498	119,956
Non-Interest Expenditures	234,187	18,231	18,996	22,746	19,838	19,521	99,333
Interest Payments	47,891	4,403	5,453	3,967	2,824	3,977	20,623
3. PRIMARY BALANCE	6,215	3,649	23	1,441	4,054	6,999	16,166
4. PRIVATIZATION AND FUNDS INCOME ⁽²⁾	6,742	1,147	41	456	200	81	1,925
5. CASH BALANCE (1+4-2)	-34,934	393	-5,388	-2,070	1,430	3,103	-2,532
6. FINANCING (7+8+9+10+11)	34,934	-393	5,388	2,070	-1,430	-3,103	2,532
7. BORROWING (NET)	26,946	182	3,369	5,522	1,224	-134	10,162
FOREIGN BORROWING (NET)	4,164	-131	-689	2,939	-932	-469	718
Borrowing	14,861	1,596	5	3,462	61	50	5,175
Payment	10,697	1,727	694	523	993	520	4,457
DOMESTIC BORROWING (NET)	22,782	312	4,058	2,583	2,156	335	9,444
Borrowing	159,024	25,419	15,931	4,523	7,886	11,474	65,233
Payment	136,242	25,107	11,873	1,940	5,730	11,139	55,789
8. PRIVATIZATION ⁽³⁾	0	0	0	0	0	0	0
9. TRANSFERS FROM SDIF	658	1	248	1	1	81	331
10. RECEIPTS FROM ONLENDING	1,371	62	7	70	109	40	287
11. CHANGE IN BANK ACCOUNTS ⁽⁴⁾ (5+7+8+9+10)	5,959	-637	1,765	-3,523	-2,763	-3,090	-8,248
12. EFFECT OF CHANGE IN EXCHANGE RATE ⁽⁵⁾	-396	225	48	-361	-38	468	342
13. NET CHANGE IN BANK ACCOUNTS ⁽⁴⁾ (11-12)	6,355	-862	1,717	-3,161	-2,725	-3,558	-8,590

(1) Provisional

(2) This amount indicates the transfers made by Turkish Privatization Administration (PA) that will be recorded as budget revenue in the Public Accounts Bulletin. Additionally, the amounts transferred from PA and Unemployment Fund for South Eastern Anatolia Project that will be recorded as budget revenue in the Public Accounts Bulletin are shown here.

(3) This row indicates the amount transferred from Turkish Privatization Administration for budget financing.

(4) A decrease / increase in bank accounts is denoted by + / - sign.

(5) This row indicates the change in the value of the items held in foreign exchange as a result of the exchange rate movements.

DOMESTIC DEBT

SECURITIES ISSUED (January-May 2011)

Zero Coupon TL Denominated Securities (Million TL)

Auction Date	Maturity Date	Annual Yield (Compound) (%)	Amount Issued	
			Nominal	Net
12.01.2011	07.11.2012	6.98	7,778	6,877
19.01.2011	14.03.2012	7.39	2,374	2,186
02.02.2011	07.11.2012	8.10	6,874	5,989
09.03.2011	07.09.2011	8.28	754	725
09.03.2011	07.11.2012	9.01	3,646	3,156
13.04.2011	20.02.2013	8.88	4,550	3,883
11.05.2011	20.02.2013	8.30	4,454	3,862
Total			30,430	26,677

Fixed Couponed TL Denominated Securities (Million TL)

Auction Date	Maturity Date	Coupon Rate (%)	Yield		Amount Issued	
			Semi-Annual	Annual Compound (%)	Nominal	Net
12.01.2011	15.01.2020 ⁽²⁾	5.25	4.28	8.75	2,937	3,431
19.01.2011	09.10.2013 ⁽¹⁾	2.00	1.98	8.16	5,334	5,353
02.02.2011	29.01.2014 ⁽¹⁾	2.00	2.21	9.14	1,855	1,814
02.02.2011	27.01.2016 ⁽²⁾	4.50	4.64	9.49	3,134	3,100
09.03.2011	29.01.2014 ⁽¹⁾	2.00	2.29	9.47	656	642
13.04.2011	29.01.2014 ⁽¹⁾	2.00	2.26	9.36	1,811	1,792
11.05.2011	29.01.2014 ⁽¹⁾	2.00	2.23	9.21	4,125	4,041
11.05.2011	27.01.2016 ⁽²⁾	4.50	4.54	9.29	1,032	1,054
Total					20,884	21,227

(1) Coupons of the security are paid quarterly.

(2) Coupons of the security are paid semi-annually.

TL Denominated Floating Rate Notes (Million TL)

Auction Date	Maturity Date	Term Interest Determined By Treasury (%)	Term Interest Accepted In Auction (%)	Amount Issued	
				Nominal	Net
12.01.2011	25.07.2017 ⁽²⁾	4.00	3.77	4,755	4,942
02.02.2011	24.01.2018 ⁽¹⁾	3.73	3.76	2,593	2,584
25.05.2011	24.01.2018 ⁽¹⁾	3.73	3.93	1,399	1,401
Total				8,747	8,927

(1) Coupons of the security are paid quarterly.

(2) Coupons of the security are paid semi-annually.

TL Denominated CPI Indexed Bonds (Million TL)

Auction Date	Maturity Date	Coupon Rate ⁽¹⁾ (%)	Yield (%)	Amount Issued	
				Nominal	Net
19.01.2011	06.01.2021	1.50	1.42	3,329	3,376
16.02.2011	06.01.2021	1.50	1.41	1,969	2,002
13.04.2011	06.01.2021	1.50	1.42	2,211	2,266
11.05.2011	04.05.2016	1.25	1.15	1,140	1,151
Total				8,650	8,794

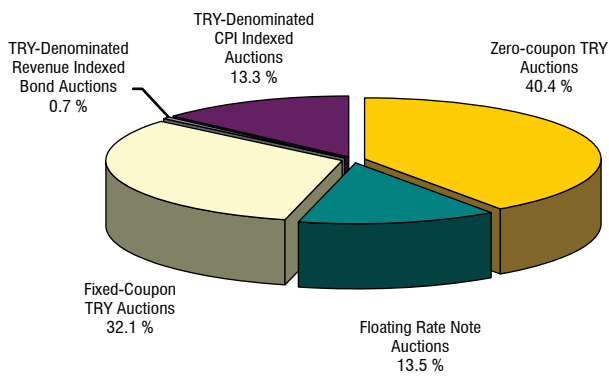
TL Denominated Revenue Indexed Bonds (Million TL)

Settlement Date	Maturity Date	Return ⁽¹⁾ (%)	Sales Amount	
			Nominal	Net
23.02.2011	20.02.2013	Indexed to State Owned Enterprises' Revenue Shares ⁽²⁾	476	476
Total			476	476

(1) Semi-annually.

(2) Indexed to the transfers from Turkish Petroleum Corporation (TPAO), State Supply Office (DMO), State Airport Authority (DHMI) and Coastal Safety (KIYEM) to the Budget as "Revenue Shares".

BREAKDOWN OF DOMESTIC BORROWING BY INSTRUMENTS ⁽¹⁾ (Jan-May 2011)

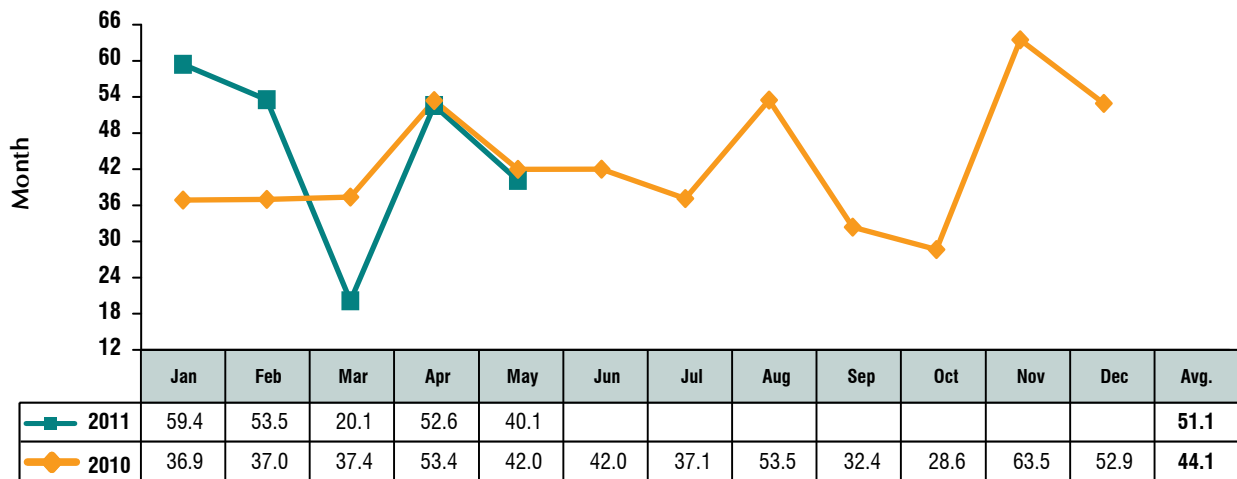


(1) Excluding switching auctions.

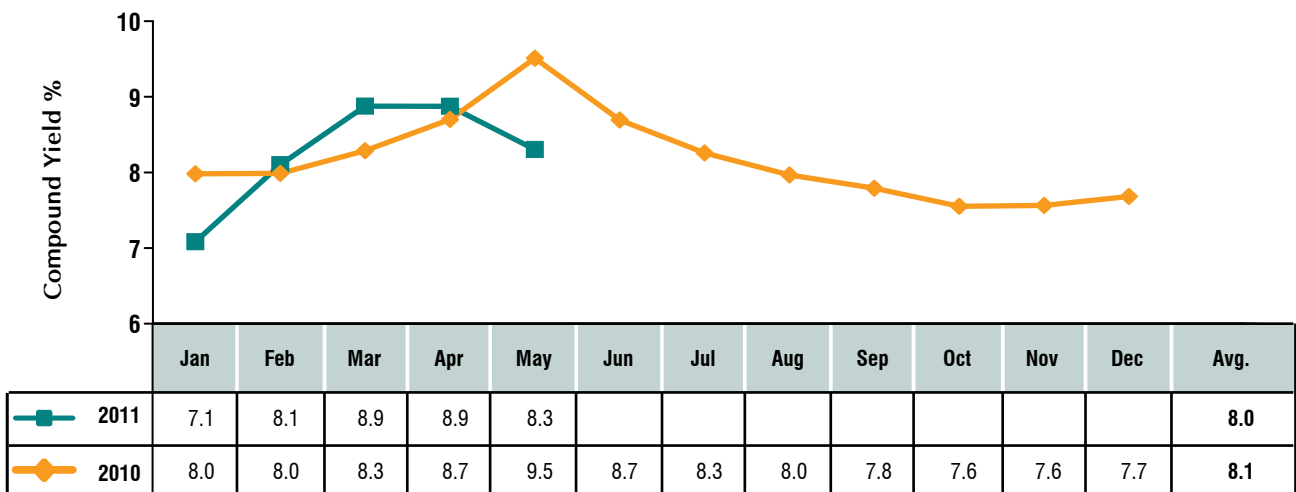
CURRENCY AND INTEREST RATE COMPOSITION OF DOMESTIC BORROWING

(%)	2010 January-May	2011 January-May
Total Borrowing	100	100
Fixed Rate	67.8	72.5
Floating Rate	32.2	27.5
Total Borrowing	100	100
TL Denominated	96.1	100
Fixed Rate	63.9	72.5
Floating Rate	32.2	27.5
FX Denominated	3.9	0
Fixed Rate	3.9	0
Floating Rate	0	0

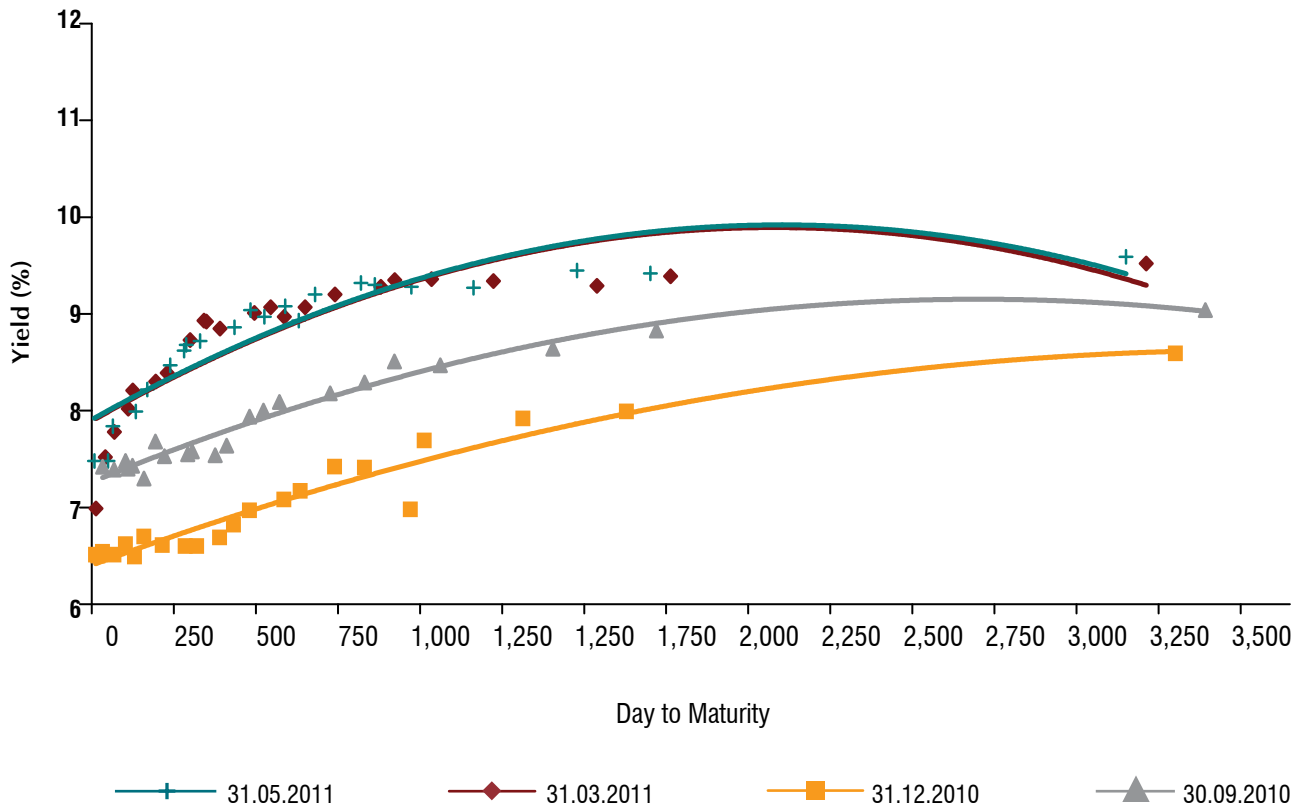
WEIGHTED AVERAGE MATURITY OF DOMESTIC BORROWING



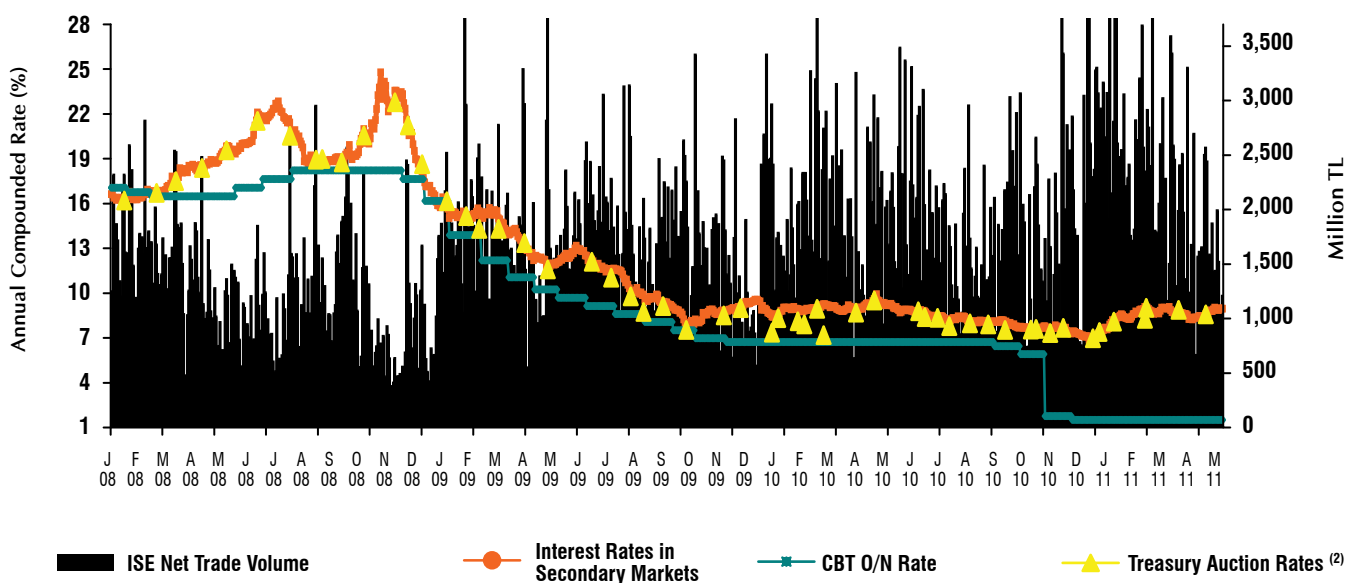
WEIGHTED AVERAGE COST OF ZERO - COUPON TL - DENOMINATED DOMESTIC BORROWING



TL YIELD CURVE



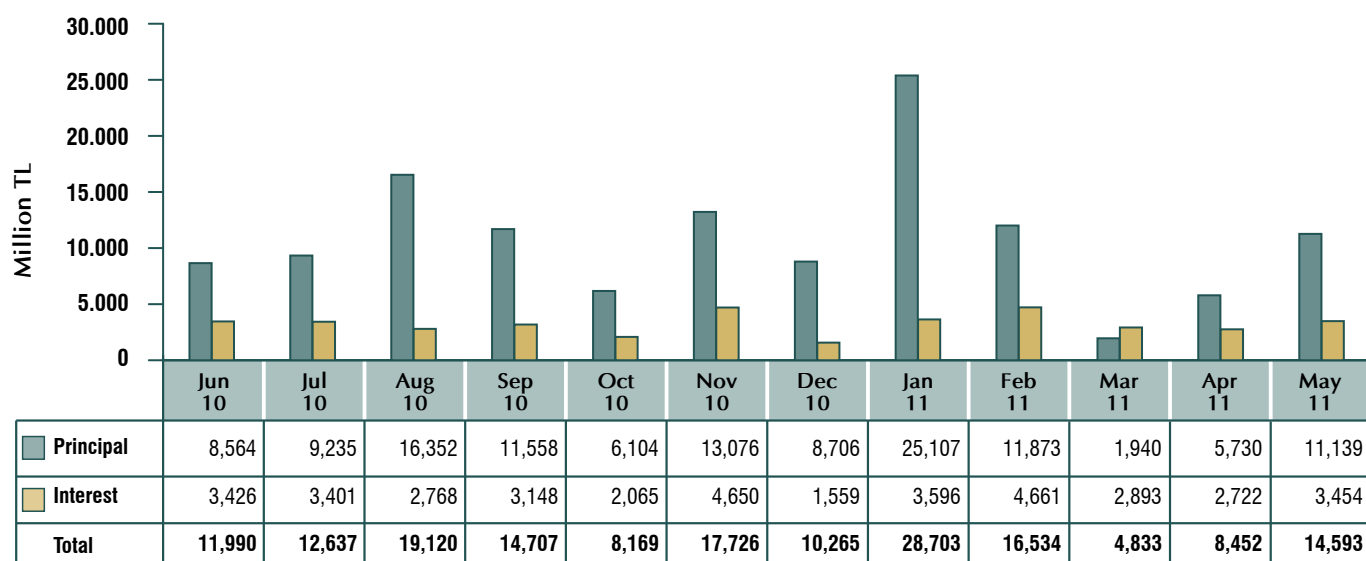
YIELDS AND TRADING VOLUMES OF GOVERNMENT DOMESTIC SECURITIES ⁽¹⁾



(1) Include daily data for issue bonds and bills outright purchases and sales market and interest rates determined in Treasury auctions.

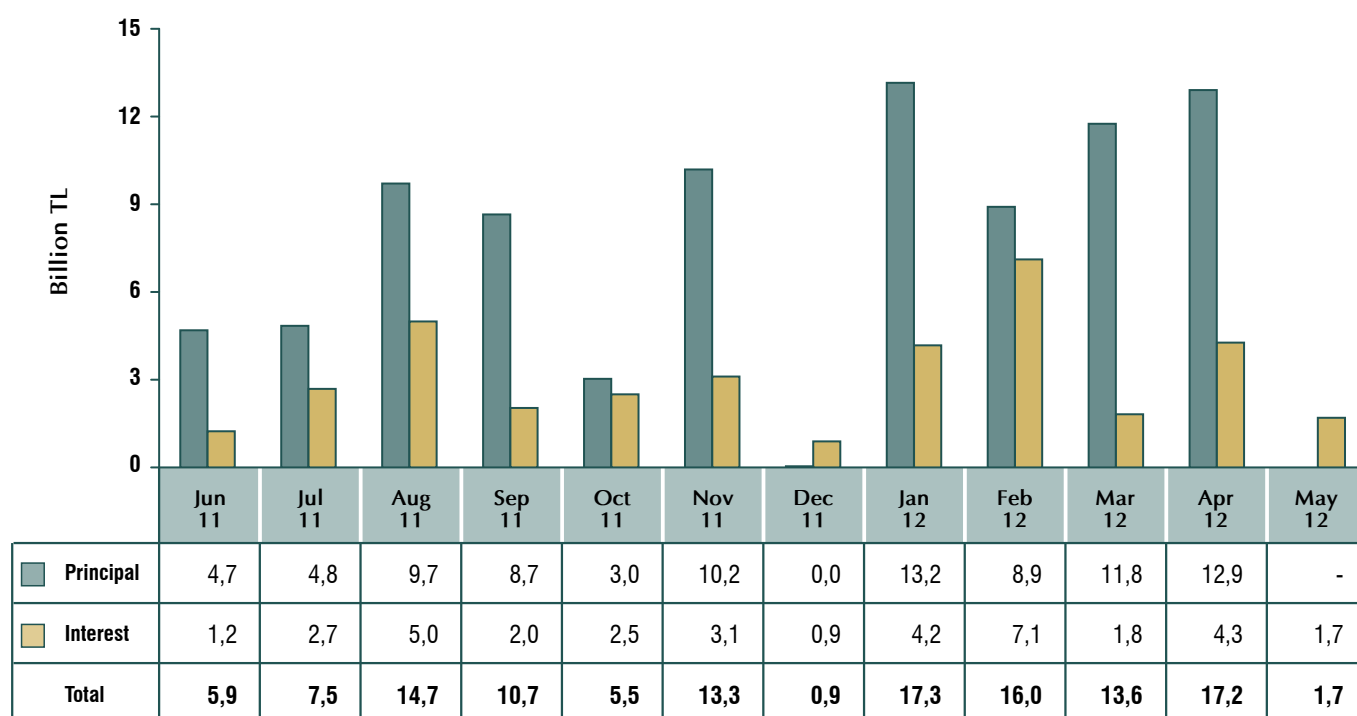
(2) Include discounted TL denominated security auctions that exclude 3 month reference t-bill issues.

CENTRAL GOVERNMENT DOMESTIC DEBT SERVICE (1)



(1) Payments on non-cash bases are included.

CENTRAL GOVERNMENT DOMESTIC DEBT PAYMENT PROJECTIONS (1)



(1) Payment projections on outstanding domestic debt stock as of June 26, 2011.

EXTERNAL DEBT

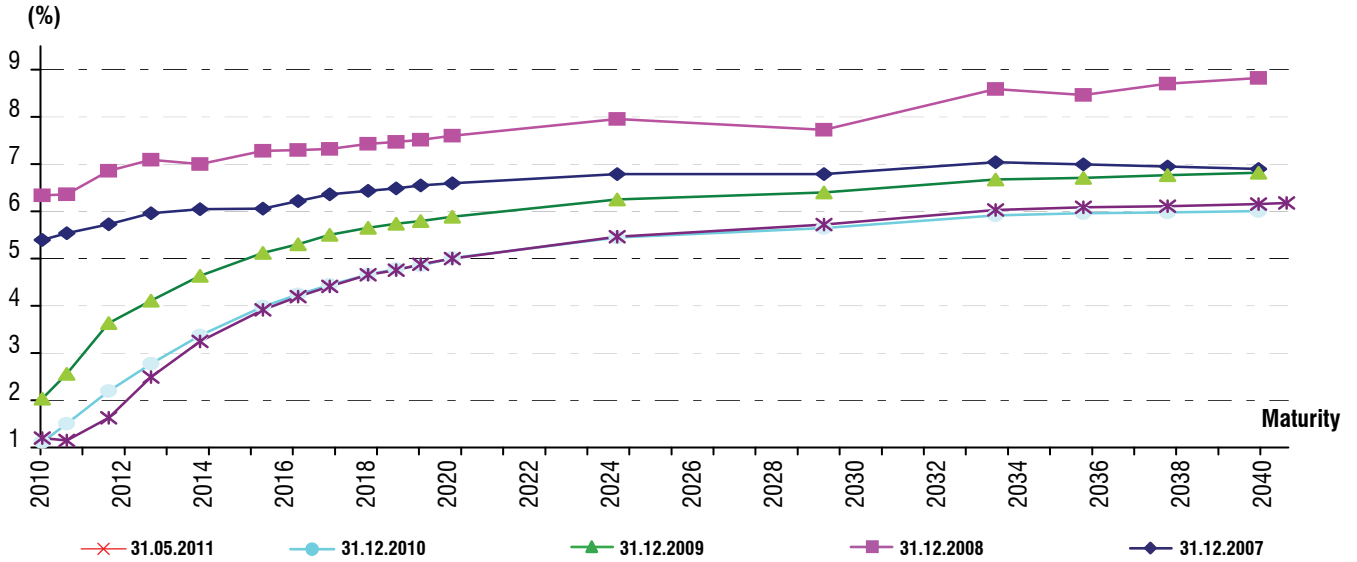
EUROBOND ISSUANCE IN 2011

Issue Type	Issue Date	Maturity	Currency	Amount (million)	Amount (million USD)	Coupon (%)	Issue Price	Yatırımcıya Getiri (%)	Yatırımcıya Getiri (Spread) Bp
Global \$	12.01.2011	14.01.2041	USD	1,000	1,000	6.00	96.631	6.250	UST + 169.7 bp
Yen Denominated	18.03.2011	18.03.2021	JPY	180,000	2,286	1.87	100.000	1.870	10y ¥ Swap + 48 bp
Total (Million US Dollar)					3,286				

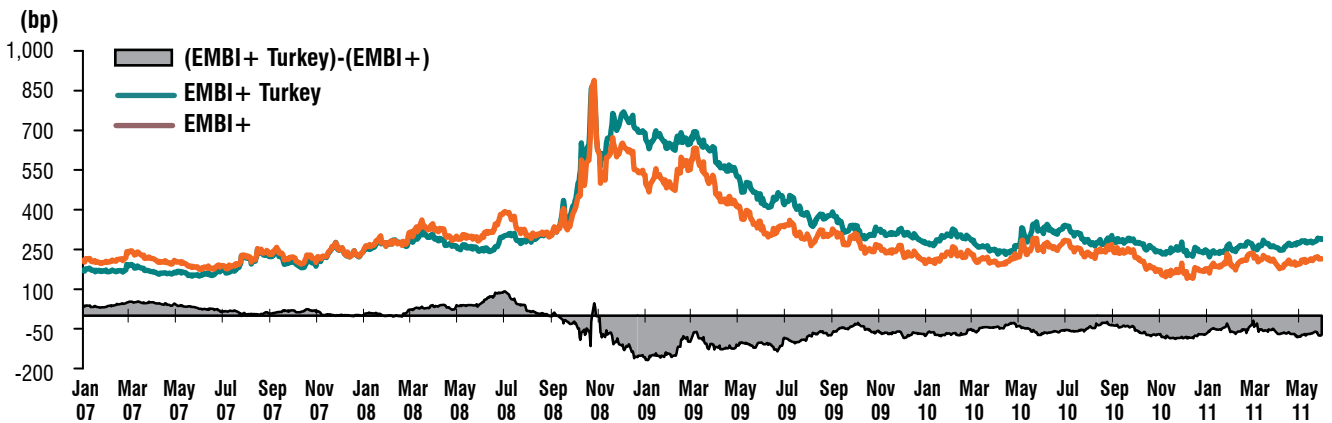
UST : United States Treasury Bond Yield

bp : Basis point (100 bp = %1.00)

YIELD CURVE OF USD DENOMINATED EUROBONDS



PERFORMANCE OF TURKEY'S BONDS IN EMERGING MARKET BOND INDEX (EMBI+)⁽¹⁾



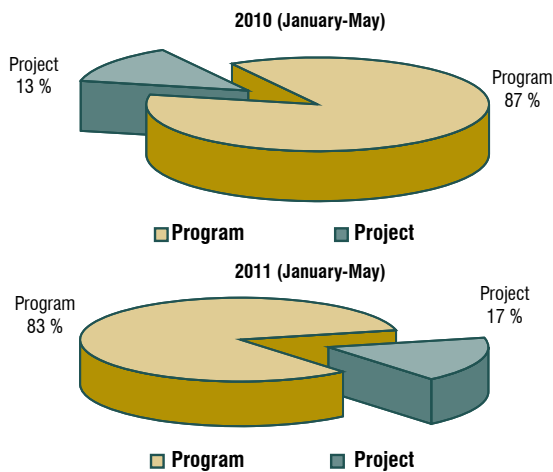
(1) EMBI+ is an index which displays the difference between the weighted yield of selected emerging sovereign bonds and the US Treasury bonds. The performance of the Turkish bonds in the index can be tracked under EMBI+ Turkey.

LOAN AGREEMENTS OF CENTRAL GOVERNMENT BUDGET

Credit name	Program Credit / Project Credit Distinction	Lender (1)	Borrower	Implementing Agency	Agreement Date (2)	Agreement Currency	Agreement Amount	USD Denominated Amount
Bond Issuance	Program	Barclays Capital, Deutsche Bank, JP Morgan	Republic of Turkey	Undersecretariat of Treasury	12-Jan-11	USD	1,000,000,000	1,000,000,000
Bond Issuance	Program	Daiwa Securities / Mitsubishi UFJ Morgan Stanley Securities / Mizuho Securities	Republic of Turkey	Undersecretariat of Treasury	18-Mar-11	JPY	180,000,000,000	2,285,714,286
	Project	Kemerhisar-Eminlik Section of the Ankara-Pozanti Highway Project	Republic of Turkey	The General Directorate of Highways	6-May-11	USD	10,000,000	10,000,000
Second Restoring Equitable Growth and Employment Programmatic Development Policy Loan	Program	International Bank for Reconstruction and Development	Republic of Turkey	Undersecretariat of Treasury	27-May-11	EURO	506,100,000	717,244,920
Total								4,012,959,206

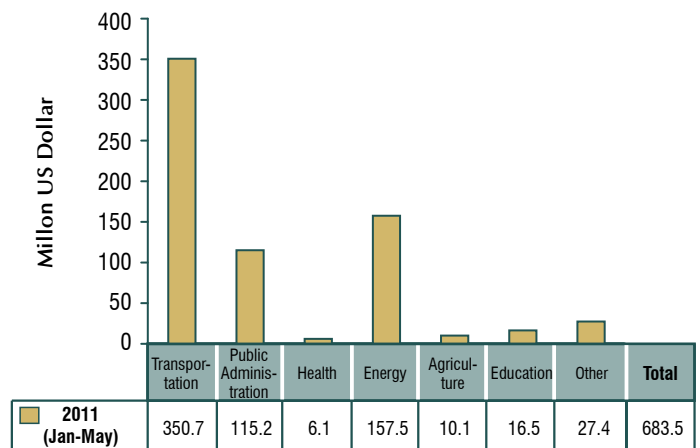
- (1) Leader managers are used for bond issuances.
 (2) Issue Date is used instead of agreement date for bond issuances.

EXTERNAL CREDIT DISBURSEMENTS OF CENTRAL GOVERNMENT (1) (2)



- (1) Including eurobond issuance.
 (2) TL equivalent is calculated by the end of relevant period's US \$ buying rates.

PROJECT CREDIT DISBURSEMENTS OF CENTRAL GOVERNMENT (1)



- (1) Calculated by the end of relevant period's US \$ buying rates.

NET FINANCING FROM THE INTERNATIONAL MONETARY FUND (1)

(Million SDR)	2000	2001	2002	2003	2004	2005	2006	2007	2008	2009	2010	2011 Jan-May	Total
I. Disbursement	2,622	8,895	9,929	1,191	794	1,666	1,999	749	2,248	0	0	0	30,093
II. Debt Service	105	1,207	5,544	1,863	3,805	5,910	5,635	3,741	1,502	582	1,508	619	32,022
Principal	66	868	4,916	1,224	3,158	5,267	5,092	3,373	1,244	458	1,423	593	27,682
Interest	40	339	628	639	647	644	543	368	258	124	85	26	4,341
III. Net Financing (I-II)	2,517	7,688	4,385	-672	-3,011	-4,245	-3,637	-2,992	746	-582	-1,508	-619	-1,929
IV. Net Financing Excluding Interest	2,556	8,028	5,013	-33	-2,364	-3,601	-3,094	-2,624	1,004	-458	-1,423	-593	2,412
V. IMF Debt Stock (end of period)	3,205	11,233	16,246	16,213	13,848	10,247	7,154	4,530	5,534	5,076	3,654	3,060	..

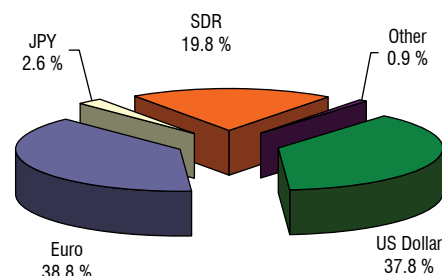
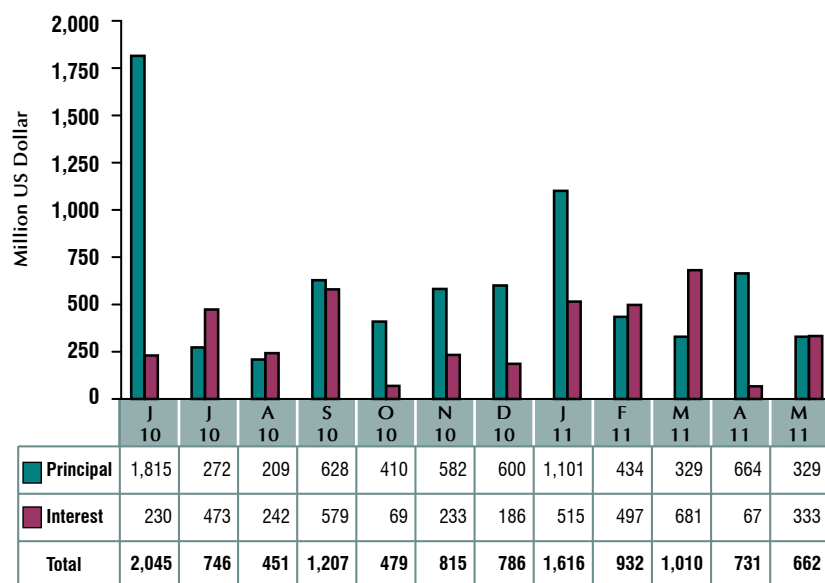
Million US Dollar (2)	2000	2001	2002	2003	2004	2005	2006	2007	2008	2009	2010	2011 Jan-May	Total
I. Disbursement	3,415	11,179	13,499	1,770	1,233	2,380	3,007	1,184	3,463	0	0	0	48,172
II. Debt Service	137	1,517	7,537	2,768	5,909	8,447	8,478	5,912	2,314	913	2,322	991	51,260
Principal	85	1,090	6,684	1,819	4,905	7,527	7,661	5,331	1,916	718	2,191	950	44,312
Interest	52	426	853	949	1,005	920	817	581	398	195	131	42	6,948
III. Net Financing (I-II)	3,278	9,662	5,962	-998	-4,677	-6,067	-5,471	-4,727	1,149	-913	-2,322	-991	-3,088
IV. Net Financing Excluding Interest	3,329	10,088	6,815	-49	-3,672	-5,147	-4,654	-4,146	1,547	-718	-2,191	-950	3,860
V. IMF Debt Stock (end of period)	4,174	14,117	22,086	24,092	21,507	14,646	10,762	7,158	8,524	7,958	5,627	4,899	..

(1) The Undersecretariat of Treasury and the Central Bank combined. The Central Bank made its last disbursement in 2001 and completed its repayment obligations in 2005.

(2) End-May 2011 \$/SDR exchange rate is used for the total column. End-period \$/SDR rates are used for the rest. All \$/SDR rates are taken from the IMF web site (www.imf.org).

CENTRAL GOVERNMENT EXTERNAL DEBT SERVICE (1) (2)

CURRENCY COMPOSITION OF EXTERNAL DEBT SERVICE (1) (January-May 2011)

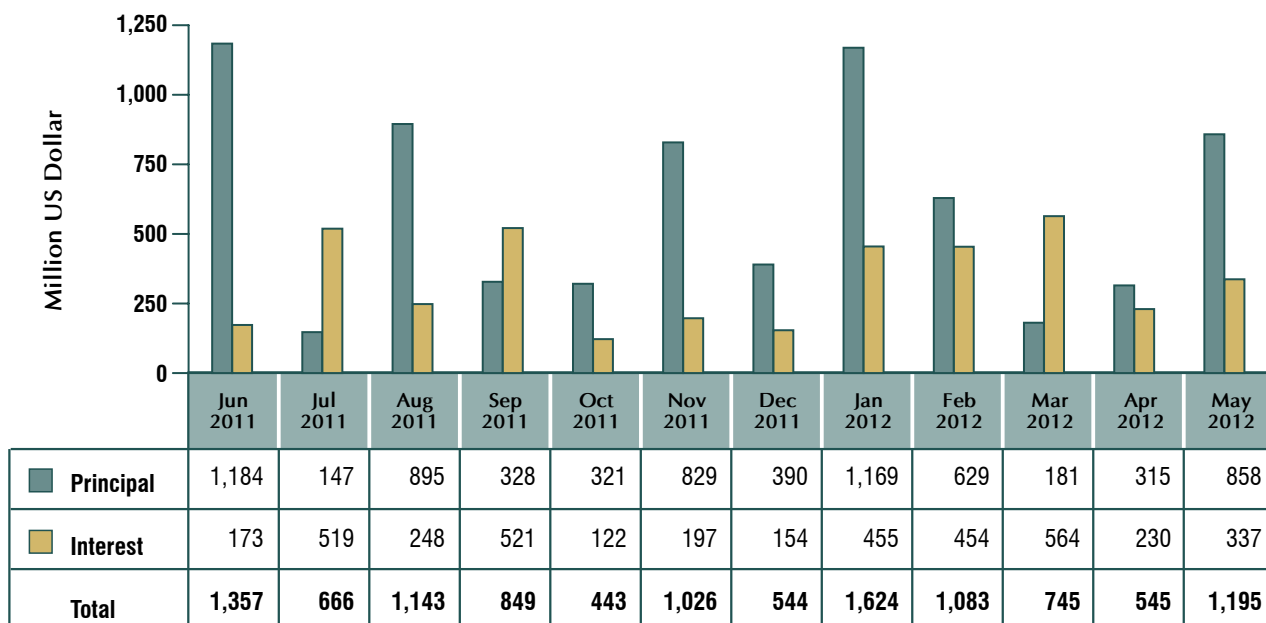


(1) Exchange rates of cash outflow dates were taken.

(1) Exchange rates of cash outflow dates were taken.

(2) Does not include discount payments, commissions and fees.

CENTRAL GOVERNMENT EXTERNAL DEBT PAYMENT PROJECTIONS (1) (2) (3) (4)



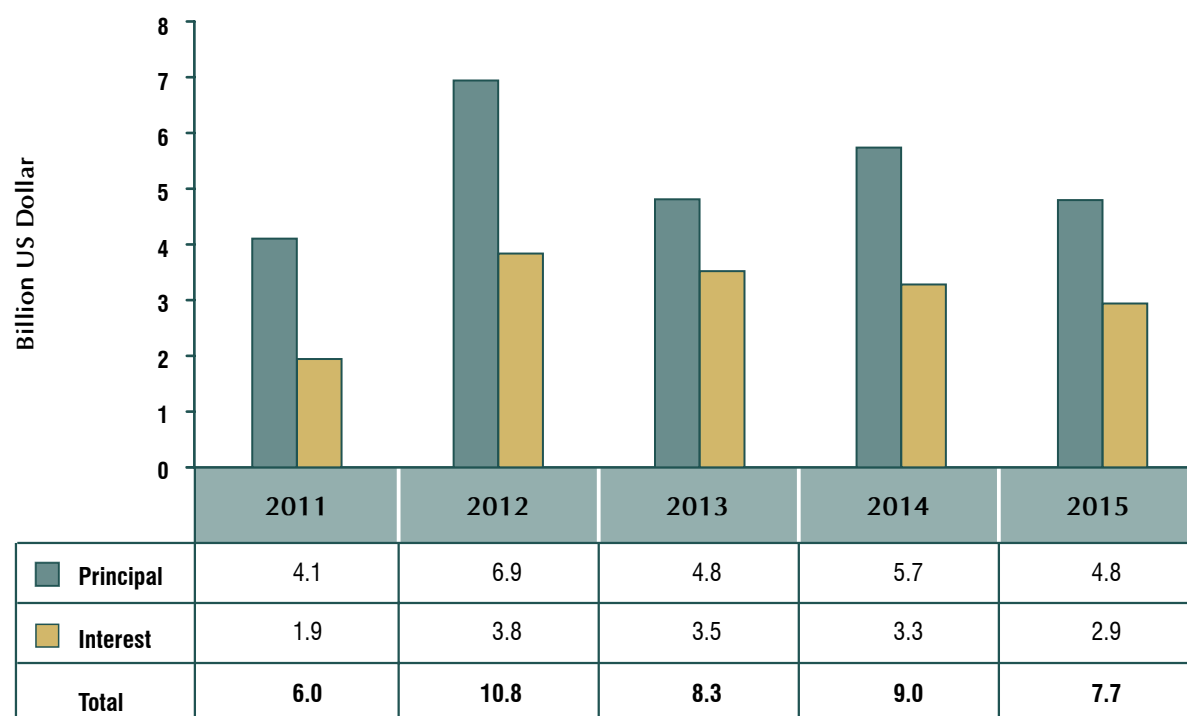
(1) Projections as of June 20, 2011.

(2) Projections are based on current debt stock and do not include potential agreements and drawings.

(3) No payment is foreseen by non-general budget institutions

(4) Does not include commissions and fees.

CENTRAL GOVERNMENT EXTERNAL DEBT PAYMENT PROJECTIONS (1) (2) (3)



(1) Projections are based on the US parities dated May 31, 2011.

(2) Projection figures are based on total debt stock amount and do not include possible realizations.

(3) Disbursement expenditures are not included.

DEBT STOCK

CURRENCY AND INTEREST COMPOSITION OF CENTRAL GOVERNMENT DEBT STOCK ⁽¹⁾

CENTRAL GOVERNMENT	(Million TL)				(Million US Dollar)				(%)			
	2008	2009	2010	2011 May	2008	2009	2010	2011 May	2008	2009	2010	2011 May
TOTAL DEBT STOCK	380,321	441,508	473,561	492,051	251,485	293,224	306,314	308,709	100	100	100	100
Fixed	216,735	235,947	265,251	279,629	143,315	156,703	171,572	175,437	57.0	53.4	56.0	56.8
Variable	163,586	205,561	208,310	212,422	108,170	136,522	134,741	133,272	43.0	46.6	44.0	43.2
TL	251,836	312,837	347,347	357,894	166,525	207,768	224,674	224,540	66.2	70.9	73.3	72.7
Fixed	126,271	144,891	170,322	177,052	83,496	96,229	110,169	111,081	33.2	32.8	36.0	36.0
Variable	125,566	167,945	177,025	180,842	83,030	111,540	114,505	113,459	33.0	38.0	37.4	36.8
FX Debt	128,484	128,671	126,214	134,156	84,960	85,456	81,639	84,169	33.8	29.1	26.7	27.3
FX	127,721	128,671	126,214	134,156	84,454	85,456	81,639	84,169	33.6	29.1	26.7	27.3
Fixed	90,464	91,056	94,929	102,577	59,819	60,474	61,403	64,356	23.8	20.6	20.0	20.8
Variable	37,256	37,615	31,285	31,579	24,635	24,982	20,236	19,813	9.8	8.5	6.6	6.4
FX Indexed	764	0	0	0	505	0	0	0	0.2	0	0	0
Variable	764	0	0	0	505	0	0	0	0.2	0	0	0
Total Domestic Debt Stock	274,827	330,005	352,841	362,656	181,728	219,170	228,228	227,527	100	100	100	100
Total Fixed	140,614	155,076	175,740	181,735	92,980	102,993	113,674	114,019	51.2	47.0	49.8	50.1
Total Variable	134,213	174,928	177,101	180,921	88,748	116,177	114,554	113,508	48.8	53.0	50.2	49.9
Foreign Debt Stock	105,493	111,503	120,720	129,395	69,757	74,054	78,085	81,181	100	100	100	100
Fixed	76,121	80,871	89,511	97,894	50,334	53,710	57,899	61,418	72.2	72.5	74.1	75.7
Variable	29,373	30,632	31,208	31,501	19,422	20,344	20,187	19,763	27.8	27.5	25.9	24.3
TOTAL DEBT STOCK	380,321	441,508	473,561	492,051	251,485	293,224	306,314	308,709	100	100	100	100
TL	251,836	312,837	347,347	357,894	166,525	207,768	224,674	224,540	66.2	70.9	73.3	72.7
USD	73,893	72,799	71,691	74,062	48,861	48,349	46,372	46,466	19.4	16.5	15.1	15.1
EUR	35,994	35,990	36,172	38,665	23,801	23,902	23,397	24,258	9.5	8.2	7.6	7.9
SDR	12,965	14,224	11,012	10,239	8,573	9,447	7,123	6,424	3.4	3.2	2.3	2.1
JPY	4,774	4,849	6,415	10,160	3,157	3,220	4,150	6,374	1.3	1.1	1.4	2.1
Other	858	809	924	1,031	567	537	598	647	0.2	0.2	0.2	0.2
Total Domestic Debt Stock	274,827	330,005	352,841	362,656	181,728	219,170	228,228	227,527	72.3	74.7	74.5	73.7
TL	251,836	312,837	347,347	357,894	166,525	207,768	224,674	224,540	66.2	70.9	73.3	72.7
USD	16,590	12,905	5,495	4,762	10,970	8,571	3,554	2,987	4.4	2.9	1.2	1.0
EUR	6,401	4,263	0	0	4,233	2,831	0	0	1.7	1.0	0	0
Total Foreign Debt Stock	105,493	111,503	120,720	129,395	69,757	74,054	78,085	81,181	27.7	25.3	25.5	26.3
USD	57,303	59,894	66,196	69,301	37,892	39,778	42,818	43,479	15.1	13.6	14.0	14.1
JPY	4,774	4,849	6,415	10,160	3,157	3,220	4,150	6,374	1.3	1.1	1.4	2.1
EUR	29,593	31,727	36,172	38,665	19,568	21,072	23,397	24,258	7.8	7.2	7.6	7.9
SDR	12,965	14,224	11,012	10,239	8,573	9,447	7,123	6,424	3.4	3.2	2.3	2.1
Other	858	809	924	1,031	567	537	598	647	0.2	0.2	0.2	0.2
\$ Buying Rate (End Period FX buying)	1.5123	1.5057	1.5460	1.5939
USD/Euro	1.4156	1.4347	1.3254	1.4285
USD/SDR	1.5473	1.5631	1.5407	1.5940

(1) Provisional.

CURRENCY AND INTEREST COMPOSITION OF CENTRAL GOVERNMENT DOMESTIC DEBT STOCK ⁽¹⁾

CENTRAL GOVERNMENT	(Million TL)				(Million US Dollar)				(%)			
	2008	2009	2010	2011 May	2008	2009	2010	2011 May	2008	2009	2010	2011 May
Total Domestic Debt Stock	274,827	330,005	352,841	362,656	181,728	219,170	228,228	227,527	100	100	100	100
Total Fixed	140,614	155,076	175,740	181,735	92,980	102,993	113,674	114,019	51.2	47.0	49.8	50.1
Total Variable	134,213	174,928	177,101	180,921	88,748	116,177	114,554	113,508	48.8	53.0	50.2	49.9
TL	251,836	312,837	347,347	357,894	166,525	207,768	224,674	224,540	91.6	94.8	98.4	98.7
Fixed	126,271	144,891	170,322	177,052	83,496	96,229	110,169	111,081	45.9	43.9	48.3	48.8
Variable	125,566	167,945	177,025	180,842	83,030	111,540	114,505	113,459	45.7	50.9	50.2	49.9
CPI Indexed ⁽²⁾	21,686	37,658	53,031	61,680	14,339	25,011	34,302	38,698	7.9	11.4	15.0	17.0
FX	22,227	17,168	5,495	4,762	14,698	11,402	3,554	2,987	8.1	5.2	1.6	1.3
Fixed	14,344	10,185	5,418	4,683	9,485	6,764	3,505	2,938	5.2	3.1	1.5	1.3
Variable	7,884	6,983	76	79	5,213	4,638	49	49	2.9	2.1	0	0
FX Indexed	764	0	0	0	505	0	0	0	0.3	0	0	0
Variable	764	0	0	0	505	0	0	0	0.3	0	0	0
PUBLIC	65,751	60,923	51,393	56,044	43,478	40,461	33,243	35,162	23.9	18.5	14.6	15.5
TL	60,973	57,181	49,540	54,442	40,318	37,977	32,044	34,157	22.2	17.3	14.0	15.0
Fixed	19,560	18,787	20,095	23,719	12,934	12,477	12,998	14,881	7.1	5.7	5.7	6.5
Variable	41,413	38,394	29,445	30,723	27,384	25,499	19,046	19,276	15.1	11.6	8.3	8.5
CPI Indexed ⁽³⁾	14,801	10,794	6,768	8,210	9,787	7,169	4,378	5,151	5.4	3.3	1.9	2.3
FX	4,014	3,741	1,854	1,602	2,655	2,485	1,199	1,005	1.5	1.1	0.5	0.4
Fixed	3,846	3,582	1,854	1,602	2,543	2,379	1,199	1,005	1.4	1.1	0.5	0.4
Variable	168	159	0	0	111	106	0	0	0.1	0	0	0
FX Indexed	764	0	0	0	505	0	0	0	0.3	0	0	0
Variable	764	0	0	0	505	0	0	0	0.3	0	0	0
MARKET	209,076	269,082	301,448	306,612	138,250	178,709	194,986	192,366	76.1	81.5	85.4	84.5
TL	190,863	255,655	297,807	303,452	126,207	169,792	192,631	190,383	69.4	77.5	84.4	83.7
Fixed	106,710	126,104	150,227	153,333	70,562	83,751	97,171	96,200	38.8	38.2	42.6	42.3
Variable	84,153	129,551	147,580	150,119	55,646	86,040	95,459	94,183	30.6	39.3	41.8	41.4
CPI Indexed ⁽²⁾	6,885	26,864	46,263	53,470	4,552	17,842	29,924	33,547	2.5	8.1	13.1	14.7
FX	18,213	13,427	3,641	3,160	12,043	8,917	2,355	1,983	6.6	4.1	1.0	0.9
Fixed	10,497	6,602	3,565	3,081	6,941	4,385	2,306	1,933	3.8	2.0	1.0	0.8
Variable	7,716	6,824	76	79	5,102	4,532	49	49	2.8	2.1	0	0
\$ Buying Rate (End Period FX buying)	1.5123	1.5057	1.5460	1.5939	1.5123	1.5057	1.5460	1.5939
USD/Euro	1.4156	1.4347	1.3254
USD/SDR	1.5473	1.5631	1.5407

(1) Provisional.

(2) CPI-Indexed bonds consist of cash sales via auctions and non cash sales issued to CBRT.

(3) Contains non-competitive bids sale via auction and non-cash bonds issued to CBRT

COMPOSITION OF DOMESTIC DEBT BY HOLDERS (1)

(%)	2004	2005	2006	2007	2008	2009	2010	2011				
								Jan	Feb	Mar	Apr	May
Banking Sector	44.9	47.0	49.1	51.7	54.9	63.4	62.9	61.5	61.2	59.6	58.6	58.7
Public Banks	25.6	23.7	24.2	23.4	26.0	26.9	25.7	25.3	25.5	25.4	24.8	25.2
Private Banks	17.9	21.2	21.5	23.4	23.3	30.8	30.7	30.1	29.9	28.2	27.7	27.7
Foreign Banks	1.0	1.5	2.9	4.1	4.9	4.9	5.5	5.1	4.8	5.1	5.1	5.1
Development and Investment Banks	0.4	0.7	0.6	0.8	0.7	0.8	1.0	1.0	1.0	1.0	0.9	0.8
Non Banking Sector (2)	47.5	46.1	44.0	42.3	40.6	34.2	35.1	36.4	36.7	38.4	39.4	39.3
Retail Investors	14.4	10.5	8.8	5.9	5.5	2.9	1.5	1.6	1.6	1.7	1.7	1.6
Corporate Investors	19.0	17.3	18.1	18.5	19.8	18.5	17.0	17.3	17.4	17.6	17.6	17.8
Securities Mutual Funds	6.9	8.0	3.5	4.5	5.0	4.2	4.1	4.2	3.9	4.2	4.3	4.2
Non Residents	7.1	10.3	13.6	13.4	10.3	8.6	12.5	13.3	13.8	14.8	15.8	15.7
CBRT (3)	7.6	6.8	6.9	6.0	4.5	2.3	2.0	2.0	2.0	2.0	2.0	2.0
Total	100	100	100	100	100	100	100	100	100	100	100	100

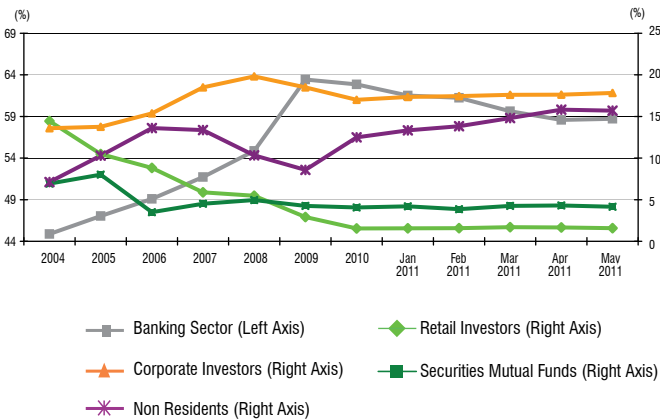
(1) Stock valuation based on Official Gazette prices.

(2) The Non-Banking Sector includes all corporate and retail investors except Saving Insurance Deposit Fund.

(3) Includes non-cash bonds and amounts related to CBRT Open Market Operations.

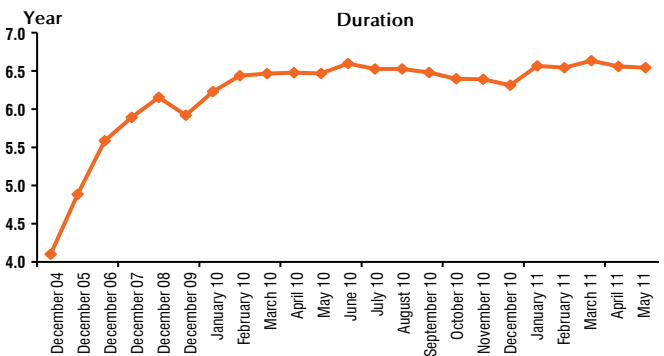
Source: CBRT

COMPOSITION OF DOMESTIC DEBT BY HOLDERS (1)



(1) Calculated according to the values of Official Gazette.

DURATION (1) AND TIME TO MATURITY (2) OF EXTERNAL BOND STOCK



(1) Provisional.

Time to Maturity

	2008	2009	2010	May 2011
Global Bonds	12.2	11.3	11.8	12.0
Euro Bonds	5.4	4.8	5.7	5.8
Total	10.3	9.6	10.3	10.5

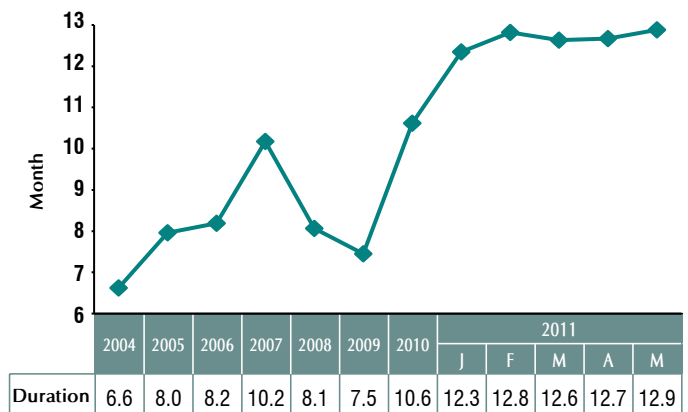
(2) As of May 31, 2011.

TIME TO MATURITY OF DOMESTIC DEBT STOCK (1)



(1) Figures show the weighted average of time to maturity of cash and non-cash stock with their stock values.

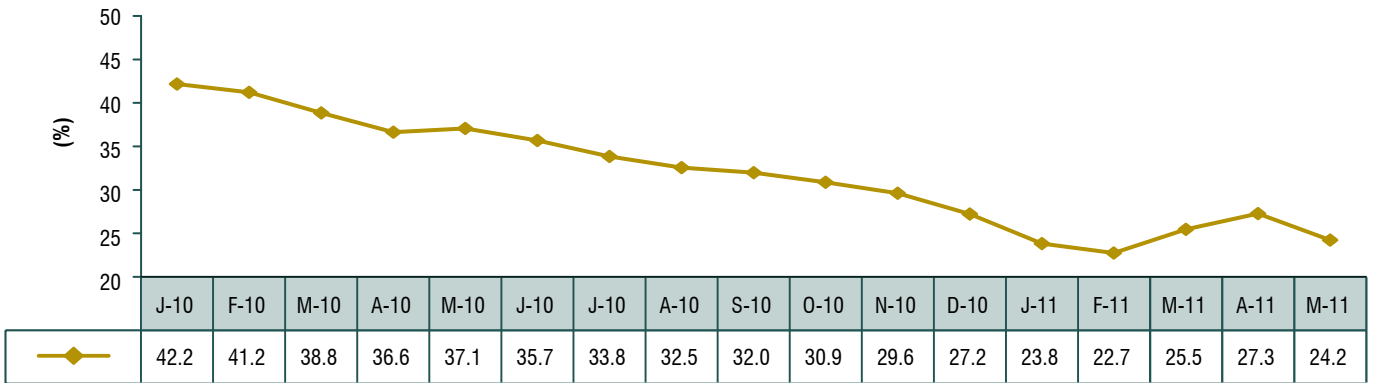
DURATION OF TL-DENOMINATED DOMESTIC DEBT STOCK (1) (2)



(1) Provisional.

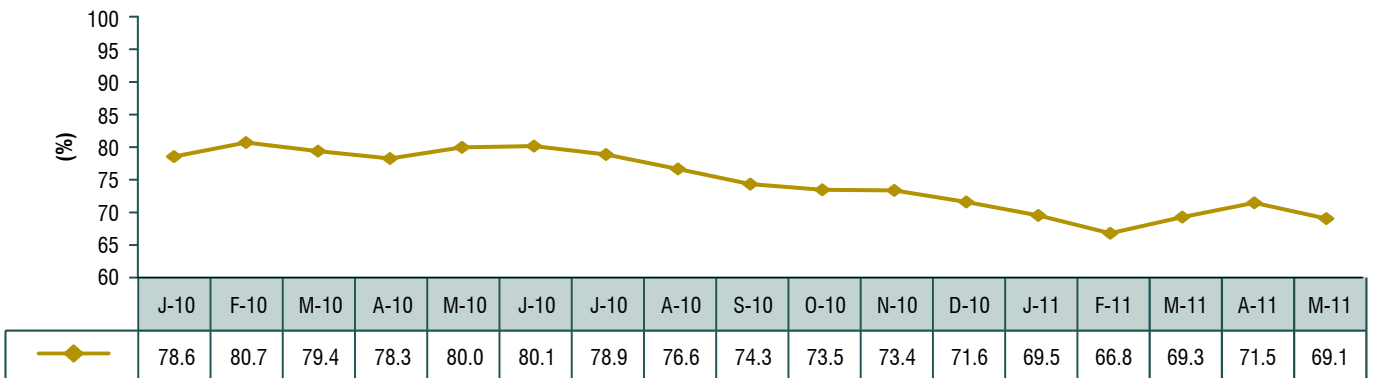
(2) Excluding non-cash securities and CPI indexed government bonds.

PERCENTAGE OF DOMESTIC DEBT MATURING WITHIN 12 MONTHS ⁽¹⁾



(1) Provisional.

INTEREST RATE RE-FIXING WITHIN 12 MONTHS (PERCENTAGE OF TL DEBT) ^{(1) (2)}



(1) Provisional.

(2) Include short term debt maturing within 12 months and floating rate debt.

TIME TO MATURITY OF CENTRAL GOVERNMENT EXTERNAL DEBT STOCK ^{(1) (2) (3)}

	2010				May 2011			
	Stock		Time to Maturity	Avg. Time to Maturity	Stock		Time to Maturity	Avg. Time to Maturity
	Million US \$	%	Year	Year	Million US \$	%	Year	Year
Debt By Maturity	76,596	100	10.5	8.8	79,653	100	10.7	9.0
Long Term (greater than 5 year)	76,596	100	10.5	8.8	79,653	100	10.7	9.0
Debt By Lender	76,596	100	10.5	8.8	79,653	100	10.7	9.0
Loan	32,411	42	10.8	6.7	32,462	40.8	11.0	6.9
Multilateral Agencies	19,388	25	10.2	6.9	19,284	24.2	10.5	7.2
(o/w IMF)	5,629	7	2.4	1.1	4,878	6.1	2.0	0.9
Bilateral Lenders	6,307	8	18.2	9.7	6,401	8.0	18.1	9.8
Others	6,717	9	5.6	3.4	6,778	8.5	5.4	3.3
Bond Issues	44,185	58	10.3	10.3	47,190	59.2	10.5	10.5
Debt By Currency	76,596	100	10.5	8.8	79,653	100	10.7	9.0
USD	42,818	56	10.9	10.2	43,479	54.6	11.1	10.4
JPY	4,150	5	19.1	10.1	6,374	8.0	15.9	10.2
EUR	23,397	31	10.2	7.9	24,258	30.5	10.3	8.0
SDR	5,645	7	2.4	1.1	4,895	6.1	2.0	0.9
Others	586	1	11.4	5.8	647	0.8	11.9	6.2

(1) As of May 31, 2011, provisional.

(2) Time to maturity is calculated considering the last principal payment date each credit's.
The average time to maturity is calculated considering each credit's principal payment dates.

(3) Does not contain SDR allocation.

PUBLIC NET DEBT STOCK ⁽¹⁾

(Million TL)	2003	2004	2005	2006	2007	2008	2009	2010	2011 Q1
Total Public Sector Net Debt (I-II-III-IV)	250,970	274,606	270,287	258,202	248,441	267,992	309,886	317,575	319,907
I- Total Public Sector Debt Stock (Gross)	297,686	333,049	351,332	365,891	355,519	408,232	465,689	496,895	509,225
A-Domestic Debt	202,108	235,105	259,801	268,286	273,262	295,787	347,378	368,934	375,528
Central Government	194,387	224,483	244,782	251,470	255,310	274,827	330,005	352,841	359,900
Rest of the Public Sector	7,721	10,622	15,019	16,816	17,952	20,960	17,374	16,093	15,628
B- External Debt	95,578	97,945	91,531	97,605	82,257	112,445	118,311	127,961	133,697
Central Government	88,421	92,046	86,738	93,580	78,175	105,494	111,504	120,720	126,101
Rest of the Public Sector	7,157	5,899	4,793	4,024	4,082	6,951	6,807	7,242	7,596
II- Central Bank Net Assets	24,733	27,891	30,793	45,685	41,769	60,371	65,995	86,216	89,242
Net Foreign Assets	17,262	23,048	49,480	67,136	70,977	92,835	92,497	114,572	123,401
Other Asset and Obligations (Net)	7,471	4,843	-18,687	-21,451	-29,208	-32,464	-26,502	-28,356	-34,159
III- Public Sector Deposits	13,053	17,235	32,223	38,256	34,603	41,516	47,713	47,166	52,698
Central Government	4,800	7,918	18,701	24,745	20,712	19,621	27,974	25,537	31,064
Rest of the Public Sector	8,253	9,317	13,522	13,511	13,892	21,895	19,739	21,629	21,634
IV-Unemployment Insurance Fund Net Assets	8,929	13,317	18,029	23,748	30,705	38,352	42,095	45,939	47,378
Net External Debt Stock	78,315	74,897	42,051	30,468	11,280	19,610	25,814	13,389	10,296
Net Domestic Debt Stock	172,655	199,709	228,236	227,734	237,161	248,382	284,072	304,186	309,611
Public Net Debt Stock/GDP (%)	55.2	49.1	41.7	34.0	29.5	28.2	32.5	28.7	..
GDP	454,781	559,033	648,932	758,391	843,178	950,534	952,559	1,105,101	..

(1) Provisional. (Due to update of foreign debt data figures may change retrospectively).

GENERAL GOVERNMENT NOMINAL DEBT STOCK ⁽²⁾ DEFINED BY EUROPEAN UNION STANDARDS ⁽¹⁾

(Million TL)	2003	2004	2005	2006	2007	2008	2009	2010	2011 Q1
I- GENERAL GOVERNMENT DEBT STOCK ⁽³⁾	288,938	322,984	338,516	352,007	340,797	391,735	454,837	487,396	500,089
Central Government	282,808	316,529	331,520	345,050	333,485	380,321	441,508	473,561	486,001
Other Public Institutions	6,130	6,455	6,996	6,957	7,312	11,413	13,329	13,835	14,088
A- DOMESTIC DEBT STOCK	197,984	228,884	250,063	256,631	260,651	282,302	338,690	361,220	368,270
Central Government	194,387	224,483	244,782	251,470	255,310	274,827	330,005	352,841	359,900
Other Public Institutions	3,598	4,401	5,281	5,161	5,341	7,475	8,685	8,379	8,371
B- EXTERNAL DEBT STOCK	90,954	94,100	88,453	95,376	80,146	109,432	116,147	126,176	131,818
Central Government	88,421	92,046	86,738	93,580	78,175	105,494	111,504	120,720	126,101
Other Public Institutions	2,533	2,054	1,715	1,796	1,971	3,939	4,644	5,456	5,717
II- ADJUSTMENT ITEMS ⁽⁴⁾	18,939	10,264	3,539	827	-4,202	-11,345	-15,499	-21,548	-23,103
Central Government	28,214	24,731	22,234	24,292	27,796	26,417	24,121	21,272	21,154
Other Public Institutions	-9,275	-14,466	-18,695	-23,465	-31,998	-37,762	-39,620	-42,820	-44,257
GENERAL GOVERNMENT NOMINAL DEBT STOCK (I+II)	307,877	333,248	342,055	352,835	336,595	380,390	439,338	465,848	476,986
GDP	454,781	559,033	648,932	758,391	843,178	950,534	952,559	1,105,101	..
GENERAL GOVERNMENT NOMINAL DEBT STOCK / GDP (%)	67.7	59.6	52.7	46.5	39.9	40.0	46.1	42.2	..

(1) Provisional. (Due to update of foreign debt data figures may change retrospectively).

(2) Consolidated nominal debt stock defined in European System of Accounts 95 (ESA 95) deficit and debt manual.

(3) Unconsolidated gross debt of General Government.

(4) Adjustment Items: For Central Government: - nominal adjustment of zero coupon securities and valuation of inflation indexed bonds
- the stock of circulating coins issued by Treasury - securities held by central government institutions
For Other Public Institutions: - securities held by other public institutions.

TURKEY'S NET EXTERNAL DEBT STOCK

(Million USD Dollar)	2003	2004	2005	2006	2007	2008	2009	2010	2011 Q1
I- Gross External Debt, Excluding Banking Sector (A-a-b)	106,119	118,600	123,506	147,929	183,806	208,274	200,247	195,759	203,237
A. Gross External Debt	144,080	160,989	169,878	207,704	249,478	280,357	268,457	289,513	298,818
a. CBT (-)	24,373	21,410	15,425	15,678	15,801	14,066	13,305	11,827	12,268
b. Banks (-)	13,588	20,979	30,947	44,097	49,870	58,017	54,905	81,927	83,313
II- Banking Sector / Monetary Sector Net Foreign Assets ⁽²⁾	9,918	15,628	24,508	39,411	50,014	57,241	54,723	26,712	32,302
A. Monetary Authorities and Deposit Money Banks ⁽¹⁾	11,078	17,097	25,906	41,063	53,106	60,933	57,609	32,284	39,131
B. Investment and Development Banks & Participation Banks	-1,161	-1,469	-1,398	-1,652	-3,092	-3,692	-2,887	-5,573	-6,829
III-Net External Debt Stock (I-II)	96,201	102,973	98,998	108,518	133,792	151,033	145,525	169,048	170,935
Net External Debt Stock/GDP (%)	31.6%	26.4%	20.6%	20.6%	20.6%	20.4%	23.6%	23.0%	..
GDP (million US dollar)	304,901	390,387	481,497	526,429	648,754	742,094	616,703	735,828	..
End of Period \$/YTL Buying Rate	1.3958	1.3421	1.3418	1.4056	1.1647	1.5123	1.5057	1.5460	..

(1) As the Treasury's obligations to the IMF is included in the liability side of the Monetary Survey table and Gross External Debt Stock, this amount is subtracted from CBT's liabilities in order to avoid double counting.

(2) Central Bank's Banking Survey data, that is not published anymore, is used for the period before 2005. After 2005, Monetary Survey data is used as a net foreign assets of monetary sector.

TREASURY GUARANTEES

TREASURY GUARANTEED EXTERNAL DEBT STOCK

(Million US Dollar)	2002	2003	2004	2005	2006	2007	2008	2009	2010	2011 Q1
GRAND TOTAL	6,279	5,842	5,306	4,381	4,302	4,870	5,712	6,618	7,440	7,935
Central Administrations	25	15	5	0	0	0	0	0	0	0
Local Administrations	1,420	1,250	1,086	832	774	818	1,079	1,189	1,274	1,323
Funds	621	534	418	318	248	187	138	91	61	60
Financial Institutions ⁽¹⁾	439	413	306	222	195	320	583	1,218	1,833	2,130
Non-Financial Institutions ⁽²⁾	3,595	3,282	2,687	1,887	1,180	1,242	1,242	1,280	1,163	1,222
Private Sector Financial Institutions ⁽³⁾	178	348	805	960	1,373	1,894	2,373	2,653	3,014	3,123
Private Sector Non-Financial Institutions	0	0	0	161	532	409	296	187	96	77
INTEREST RATE COMPOSITION	6,279	5,842	5,306	4,381	4,302	4,870	5,712	6,618	7,440	7,935
Fixed	2,085	1,999	1,891	1,474	1,196	1,186	1,396	1,503	1,588	1,724
Floating	4,051	3,708	3,298	2,826	3,014	3,498	4,045	4,851	5,620	5,976
Combined	143	135	118	81	91	187	271	264	232	235
CURRENCY COMPOSITION	6,279	5,842	5,306	4,381	4,302	4,870	5,712	6,618	7,440	7,935
USD	4,248	3,680	3,135	2,575	2,248	2,167	2,237	2,520	2,970	3,025
JPY	561	453	273	186	121	89	90	64	33	31
EUR	1,167	1,462	1,713	1,492	1,845	2,565	3,358	4,011	4,418	4,860
OTHERS	303	247	185	127	87	50	27	23	19	20

(1) Represents Public Banks.

(2) Represents SOEs, Istanbul Gas Distribution Company (IGDAS), Izmit Gas Distribution Company (IZGAZ) and Istanbul Olympic Games Preparation & Organizing Board. The stocks of the privatised institutions take place in here until the privatisation date.

(3) Represents Turkey Industrial Development Bank (TSKB).

TIME TO MATURITY OF TREASURY GUARANTEED DEBT STOCK ⁽¹⁾

(Year)	2010 Q4		2011 Q1	
	Time to Maturity	Avg. Time to Maturity	Time to Maturity	Avg. Time to Maturity
Public	12.6	7.7	12.8	7.7
General Government	11.1	6.7	11.6	7.1
Local Administrations	11.5	7.0	12.0	7.2
Funds	1.9	1.4	1.8	1.2
Financial Institutions	16.4	10.0	15.9	9.8
Public Banks	16.4	10.0	15.9	9.8
Non Financial Institutions	10.8	5.4	9.7	5.5
SOEs	9.5	5.4	9.7	5.5
Other	0.3	0.3	0.0	0.0
Private	9.8	6.1	9.9	6.2
Financial Institutions	10.0	6.2	10.0	6.3
Banks	10.0	6.2	10.0	6.3
Non-Financial Institutions	1.8	1.0	1.7	0.9
Companies	1.8	1.0	1.7	0.9
Total	11.3	6.9	11.5	7.0

(1) Provisional.

TREASURY GUARANTEED DEBT AGREEMENTS (January - May 2011)

Borrower	Credit Name	Lender	Agreement Date	Agreement Amount	Guarantee Ratio (%)	Currency	Maturity (Year)	Grace Period (Year)	Amount in Terms of USD ⁽¹⁾
Türkiye Sınai Kalkınma Bankası A.Ş.	"Additional Loan for the Fourth Export Finance Intermediation Project"	International Bank for Reconstruction and Development	5-Apr-11	180,000,000	100%	USD	28	7	180,000,000
Türkiye Sınai Kalkınma Bankası A.Ş.	"Additional Loan for the Fourth Export Finance Intermediation Project"	International Bank for Reconstruction and Development	5-Apr-11	87,800,000	100%	Avro	28	7	124,886,720
TOPLAM									304,886,720

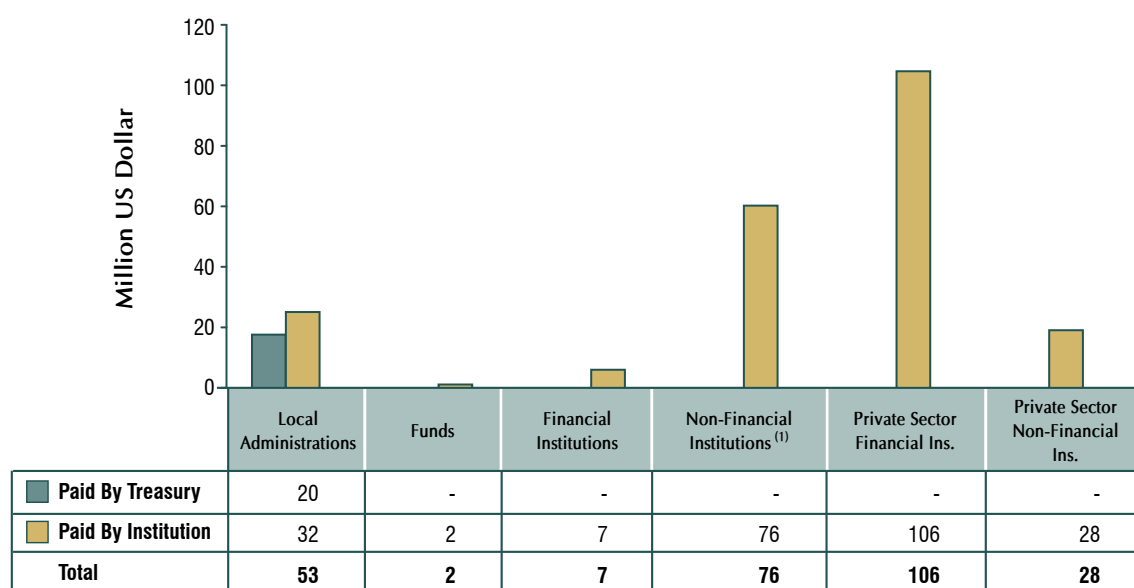
(1) Calculations are based on Central Bank foreign exchange rate as of agreement date.

TREASURY GUARANTEED DEBT AGREEMENTS ⁽¹⁾ (2002-2011)

(Million US Dollar)	2002	2003	2004	2005	2006	2007	2008	2009	2010	2011 J - M
Public	251	0	2	208	1,778	637	1,393	2,177	1,102	..
Financial Institutions	0	0	0	0	255	410	731	1,652	754	..
SOEs	209	0	0	61	961	0	444	184	0	..
Local Administrations	43	0	2	147	561	227	217	341	348	..
Private	67	218	806	590	255	266	607	582	100	305
TOTAL	319	218	808	798	2,032	903	1,999	2,759	1,202	305

(1) Contract based

REPAYMENTS OF TREASURY GUARANTEED DEBT (January-May 2011)



(1) Includes SOEs, IGDAS - Istanbul Gas Distributions Company, IZGAZ - Izmit Distribution Company, Istanbul Olympic Games Preparation & Organizing Board.

REPAYMENTS OF TREASURY GUARANTEED DEBT (2002 - 2011)

BY BUDGET TYPE (Million US Dollar)	2002	2003	2004	2005	2006	2007	2008	2009	2010	2011 ⁽¹⁾	Total
Central Government	12	12	11	0	0	0	0	0	0	0	35
Paid by Treasury	12	12	11	0	0	0	0	0	0	0	35
Paid by Institution	0	0	0	0	0	0	0	0	0	0	0
Local Administrations	528	390	355	275	237	187	137	130	143	53	2,433
Paid by Treasury	458	308	243	194	138	85	54	50	57	20	1,607
Paid by Institution	69	83	111	81	99	101	83	80	86	32	826
Funds	158	159	149	125	85	67	32	37	26	2	841
Paid by Treasury	0	0	0	0	0	0	0	0	0	0	0
Paid by Institution	158	159	149	125	85	67	32	37	26	2	841
Financial Institutions	58	110	121	119	114	43	22	8	39	7	641
Paid by Treasury	0	0	0	0	0	0	0	0	0	0	0
Paid by Institution	58	110	121	119	114	43	22	8	39	7	641
Non Financial Institutions ⁽²⁾	985	1,025	1,011	725	333	251	237	200	177	76	5,020
Paid by Treasury	437	158	45	18	74	116	83	121	6	0	1,058
Paid by Institution	549	866	965	707	260	136	154	78	171	76	3,962
Private Sector Financial Institutions	6	51	9	31	61	116	204	188	199	106	971
Paid by Treasury	0	0	0	0	0	0	0	0	0	0	0
Paid by Institution	6	51	9	31	61	116	204	188	199	106	971
Private Sector Non Financial Institutions	0	0	0	0	247	150	119	113	93	28	750
Paid by Treasury	0	0	0	0	0	0	0	0	0	0	0
Paid by Institution	0	0	0	0	247	150	119	113	93	28	750
TOTAL	1,747	1,747	1,655	1,275	1,076	814	752	677	676	272	10,691
Paid by Treasury	907	478	300	213	211	201	137	171	62	20	2,700
Paid by Institution	840	1,269	1,355	1,063	865	613	615	506	614	251	7,990

(1) As of May 31, 2011.

(2) Includes SOEs, IGDAS - Istanbul Gas Distributions Company, IZGAZ - Izmit Distribution Company, Istanbul Olympic Games Preparation & Organizing Board.

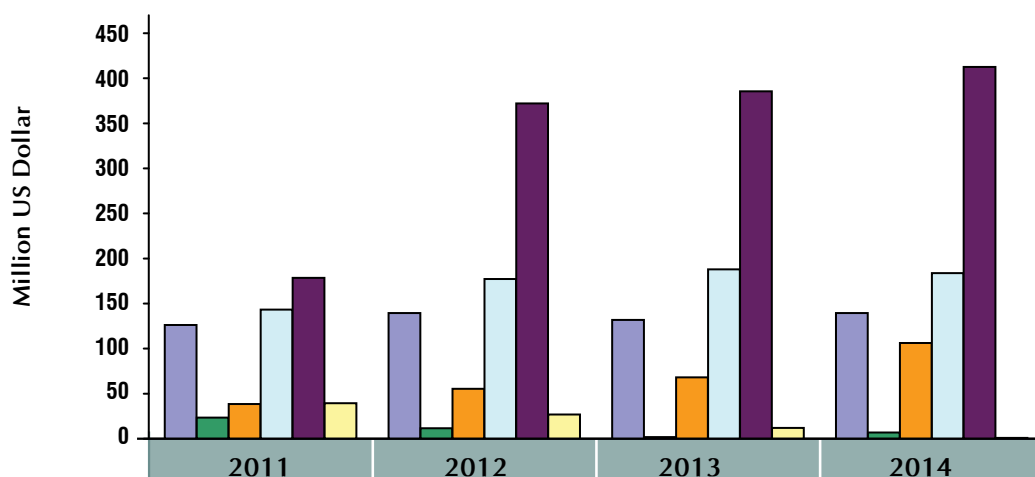
RISK ACCOUNT (1)

(Thousand TL)	January-May 2010	January-May 2011
Total Payments	88,482	82,616
Non-Financial Institutions	6,517	0
Financial Institutions	0	0
Private Sector Financial Institutions	0	0
BOT	48,752	51,221
Local Administrations	33,213	31,395
Central Government	0	0
FX Differences	0	0
Total Income (-) ⁽²⁾	202,462	57,079
Non-Financial Institutions	121,463	4,408
Financial Institutions	523	666
Private Sector Financial Institutions	346	0
BOT	41,057	24,147
Local Administrations	39,068	27,854
Central Government	0	0
CBRT Interest Revenue	4	4

(1) Risk Account which belongs to the Treasury has been established at the Central Bank of Turkey for the undertaking of the repayments by the Treasury for Treasury guarantees.

(2) Provisional.

TREASURY GUARANTEED DEBT PAYMENT PROJECTIONS (1)



	2011	2012	2013	2014
Local Administrations	126	139	132	140
Funds	23	12	2	7
Financial Ins.	38	55	68	106
Non-Financial Ins.	143	177	188	184
Private Sector Financial Ins.	179	372	385	413
Private Sector Non-Financial Ins.	39	27	12	1
Total	549	783	787	850

(1) Provisional as of March 31, 2011

TREASURY NON-GUARANTEED LOAN AGREEMENTS OF PUBLIC SECTOR

TREASURY NON-GUARANTEED EXTERNAL DEBT AGREEMENTS (January - May 2011)

Borrower	Project Name	Lender	Agreement Date	Agreement Amount	Currency	Maturity (Year)	Grace Period (Year)	Amount In Terms Of USD
T. Halk Bankası A.Ş.	Energy Efficiency and Renewable Energy Project	Agence Française de Developpement	24.03.2011	100,000,000.00	EUR	12.0	4.5	141,680,000.00
Bursa Büyükşehir Belediyesi	Bursa Light Rail System (Phase II) Project	European Bank For Reconstruction And Development (EBRD)	15.03.2011	50,000,000.00	EUR	14.5	3.0	69,740,000.00
İstanbul Büyükşehir Belediyesi	Kadıköy-Kartal Subway	Westdeutsche Landesbank	21.04.2011	242,743,818.32	EUR	9.5	1.5	351,662,969.60
Total								563,082,969.60

TREASURY RECEIVABLES

TREASURY RECEIVABLES STOCK (1)

	2010		May 2011	
	Million TL	%	Million TL	%
Local Administrations	14.682	58,1	14.626	57,3
SOE's	6.019	23,8	6.323	24,8
Banks	888	3,5	922	3,6
Social Security Institution	9	0	10	0,0
Public Banks	585	2,3	600	2,3
Public Enterprises	1.285	5,1	1.211	4,7
Central Administrations	1.723	6,8	1.769	6,9
Organizations (2)	23	0,1	20	0,1
Insurance Institutions	48	0,2	39	0,2
Private Institutions (3)	4	0	5	0,0
Foundations (4)	21	0,1	20	0,1
TOTAL	25.288	100	25.545	100

(1) Provisional. Indicates the total amount of outstanding overdue and projected receivables.

(2) Represents Industrial Zones, Trade Unions and Istanbul Olympic Games Preparation & Organizing Board.

(3) Represents privatized SOE's and corporations governed by foundations.

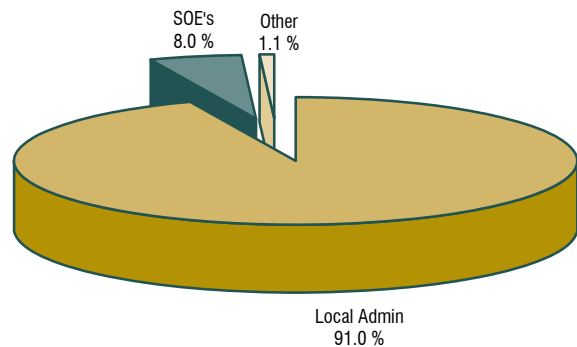
(4) Represents universities subordinated by foundations and Foundation of Technological Improvements in Turkey.

OUTSTANDING OVERDUE RECEIVABLES (1)

	2010		May 2011	
	Million TL	%	Million TL	%
Local Administrations	7.790	93,8	5.868	91,0
SOE's	433	5,4	513	8,0
Central Administrations	67	0,8	69	1,1
TOTAL	8.306	100	6.451	100

(1) Provisional

OUTSTANDING OVERDUE RECEIVABLES (May 2011)

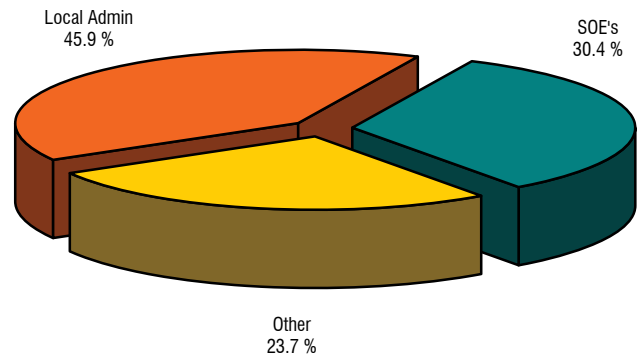


OUTSTANDING RECEIVABLES EXCLUDING OVERDUES (1)

	2010		May 2011	
	Million TL	%	Million TL	%
Local Administrations	6,892	40.6	8,758	45.9
SOE's	5,570	32.8	5,810	30.4
Banks	888	5.2	922	4.8
Social Security Institutions	9	0.1	10	0.1
Public Banks	585	3.4	600	3.1
Public Enterprises	1,285	7.6	1,211	6.3
Central Administrations	1,656	9.8	1,700	8.9
Organizations	23	0.1	20	0.1
Insurance Institutions	48	0.3	39	0.2
Private Institutions	4	0	5	0.0
Foundations	21	0.1	20	0.1
TOTAL	16,982	100	19,094	100

(1) Provisional

OUTSTANDING RECEIVABLES EXCLUDING OVERDUES (May 2011)



TIME TO MATURITY OF PROJECTED RECEIVABLES STOCK (1) (2)

(Year)	2010		May 2011	
	Time to Maturity	Avg. Time to Maturity	Time to Maturity	Avg. Time to Maturity
Local Administrations	14.8	7.8	14.7	7.6
SOEs	7.7	4.8	7.3	4.5
Banks	7.1	3.9	6.8	3.7
Public Banks	9.9	5.6	9.7	5.5
Central Government	10.0	7.8	9.6	7.4
Public Enterprises	7.0	3.7	6.6	3.5
Other Administrations ⁽³⁾	3.2	1.6	3.1	1.6
Insurance Institutions	3.2	1.8	3.1	1.7
Foundations ⁽⁴⁾	5.5	2.8	5.1	2.6
Private Institutions ⁽⁵⁾	9.0	3.8	8.6	3.4
Social Security Institutions	12.5	6.8	12.7	7.0
Total	9.0	5.5	8.7	5.3

(1) Within the framework of Laws No: 5216 and 5393 debts promised by means of exchange, set off and deduction are excluded.

(2) Overdue receivables are excluded.

(3) Represents Industrial Zones, Trade Unions and Istanbul Olympic Games Preparation & Organizing Board.

(4) Represents universities subordinated by foundations and the Foundation of Technological Improvements in Turkey.

(5) Represents privatized SOE's and corporations governed by foundations.

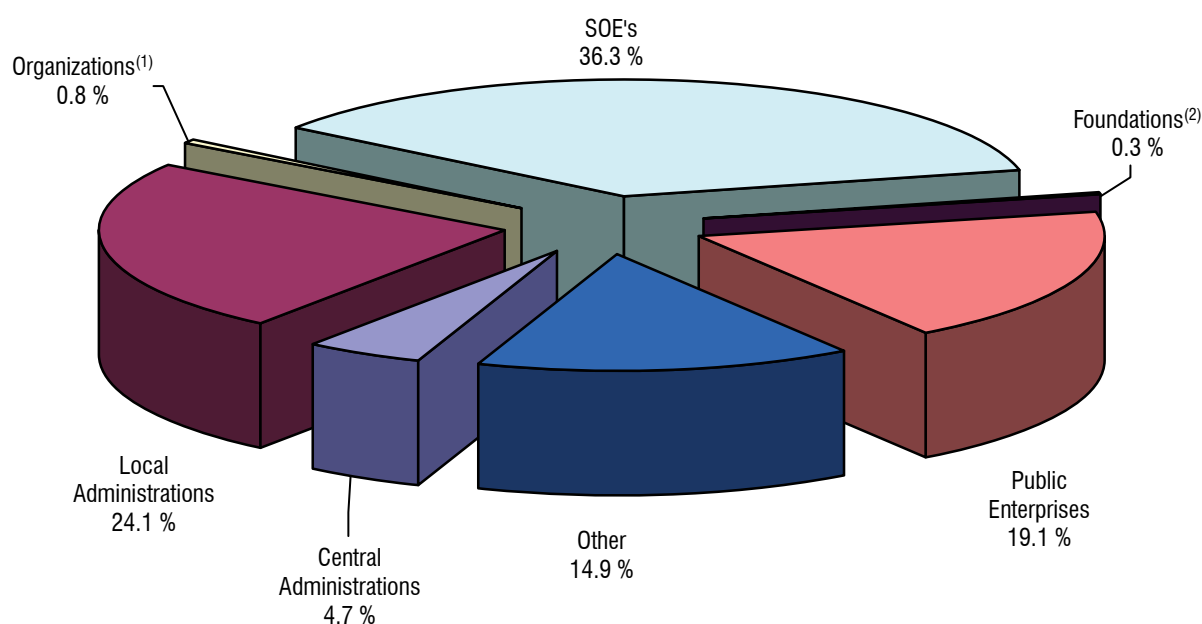
COLLECTIONS FROM TREASURY RECEIVABLES (1)

	2007		2008		2009		2010		Jan-May 2011	
	Million TL	%	Million TL	%	Million TL	%	Million TL	%	Million TL	%
Funds	1,784	55.8	1,701	39.5	0	0	0	0	0	0
Local Administrations	665	20.7	610	14.2	631	35.1	453	17.1	164	24.1
SOE's	505	15.8	1,734 ⁽²⁾	40.3	645	36.0	1,684	63.7	247	36.3
Banks	109	3.4	123	2.9	131	7.3	157	5.9	54	7.9
Public Banks	66	2.1	66	1.5	66	3.7	67	2.5	36	5.3
Public Enterprises	5	0.2	6	0.1	225	12.5	184	7.0	130	19.1
Central Administrations	15	0.5	22	0.5	46	2.5	53	2.0	32	4.7
Organizations	24	0.8	15	0.4	21	1.2	16	0.6	5	0.8
Insurance Institutions	12	0.4	13	0.3	16	0.9	21	0.8	11	1.6
Private Institutions	8	0.2	9	0.2	9	0.5	3	0.1	0	0
Foundations	3	0.1	3	0.1	4	0.2	3	0.1	2	0.3
Social Security Institution	0	0	1	0	1	0.1	1	0	0	0.1
TOTAL	3,198	100	4,302	100	1,794	100	2,641	100	681	100

(1) Provisional

(2) Including the Offsetting Transaction Due to The Provisional Article 16 of Law No. 4749

COLLECTIONS FROM TREASURY RECEIVABLES (January-May 2011)



(1) Represents Industrial Zones, Trade Unions and Istanbul Olympic Games Preparation & Organizing Board.

(2) Represents universities subordinated by foundations and Foundation of Technological Improvemets in Turkey.

DEVELOPMENTS IN THE CREDIT RATING OF TURKEY

LONG TERM FOREIGN CURRENCY

	Standard & Poor's	Moody's	Fitch	JCR
2004	BB- (stable)	B1 (stable)	B+ (positive)	B+ (positive)
13.01.2005			BB- (stable)	
11.02.2005		B1 (positive)		
10.03.2005				BB- (positive)
06.12.2005			BB- (positive)	
14.12.2005		Ba3 (stable)		
2005	BB- (stable)	Ba3 (stable)	BB- (positive)	BB- (positive)
23.01.2006	BB- (positive)			
27.06.2006	BB- (stable)			
2006	BB- (stable)	Ba3 (stable)	BB- (positive)	BB- (positive)
10.05.2007			BB- (stable)	
28.12.2007				BB- (stable)
2007	BB- (stable)	Ba3 (stable)	BB- (stable)	BB- (stable)
03.04.2008	BB- (negative)			
31.07.2008	BB- (stable)			
13.11.2008	BB- (negative)			
2008	BB- (negative)	Ba3 (stable)	BB- (stable)	BB- (stable)
17.09.2009	BB- (stable)			
18.09.2009		Ba3 (positive)		
03.12.2009			BB+ (stable)	
2009	BB- (stable)	Ba3 (positive)	BB+ (stable)	BB- (stable)
08.01.2010		Ba2 (stable)		
01.02.2010				BB (stable)
19.02.2010	BB (positive)			
05.10.2010		Ba2 (positive)		
03.12.2010			BB+ (positive)	
Current	BB (positive)	Ba2 (positive)	BB+ (positive)	BB (stable)

LONG TERM TL

	Standard & Poor's	Moody's	Fitch	JCR
2004	BB (stable)	B2 (stable)	B+ (stable)	B+ (positive)
13.01.2005			BB- (stable)	
11.02.2005		B1 (positive)		
10.03.2005				BB- (positive)
06.12.2005			BB- (positive)	
14.12.2005		Ba3 (stable)		
2005	BB (stable)	Ba3 (stable)	BB- (positive)	BB- (positive)
23.01.2006	BB (positive)			
27.06.2006	BB (stable)			
2006	BB (stable)	Ba3 (stable)	BB- (positive)	BB- (positive)
10.05.2007			BB- (stable)	
12.12.2007			BB (stable)	
28.12.2007				BB- (stable)
2007	BB (stable)	Ba3 (stable)	BB (stable)	BB- (stable)
03.04.2008	BB (negative)			
31.07.2008	BB (stable)			
13.11.2008	BB (negative)			
2008	BB (negative)	Ba3 (stable)	BB (stable)	BB- (stable)
17.09.2009	BB (stable)			
18.09.2009		Ba3 (positive)		
03.12.2009			BB+ (stable)	
2009	BB (stable)	Ba3 (positive)	BB+ (stable)	BB- (stable)
08.01.2010		Ba2 (stable)		
01.02.2010				BB (stable)
19.02.2010	BB+ (positive)			
05.10.2010		Ba2 (positive)		
03.12.2010			BB+ (positive)	
Current	BB+ (positive)	Ba2 (positive)	BB+ (positive)	BB (stable)

Note: Islamic International Rating Agency (IIRA) has assigned BBB- credit rating for long-term local currency obligations and BB+ credit rating for long-term foreign currency obligations on October 5, 2008.

CALENDAR

DOMESTIC BORROWING CALENDAR

	FIRST WEEK	SECOND WEEK	THIRD WEEK	FOURTH WEEK	FIFTH WEEK
Auction Announcement	-	-	15/07	-	-
Zero-coupon TL Auction	-	-	-	19/07	-
Fixed-Coupon TL Auction	-	-	-	18/07-19/07	-
Floating Rate Note Auction	-	-	-	-	-
CPI Indexed Auction	-	-	-	-	-
Announcement of Monthly Auction Calendar	-	-	-	-	29/07

DATA DISSEMINATION SCHEDULE

8 July	Treasury Cash Balance Realizations (June 2011)
20 July	Realizations of Consolidated Government Sector Balance (May 2011)
20 July	Program Defined Central Government Primary Balance (June 2011)
20 July	General Budget Financing (June 2011)
20 July	Central Government Budget Financing (June 2011)
20 July	Central Government Debt Statistics (June 2011)
20 July	Central Government Debt Stock According to IMF SDDS Program (June 2011)
20 July	Domestic Debt Statistics (June 2011)
20 July	External Debt Stock of Central Government (June 2011)
20 July	Treasury Receivable Statistics (June 2011)
29 July	Central Government Budget Realizations and Financing According to IMF SDDS Program (June 2011)

PRIMARY DEALER BANKS

Bank Name	Web-Address	Phone
Akbank	www.akbank.com.tr	0-212-270 00 44
Deutsche Bank A.Ş.	www.deutschebank.com.tr	0-212-317 01 00
Finansbank A.Ş.	www.finansbank.com.tr	0-212-318 59 01
HSBC Bank A.Ş.	www.hsbc.com.tr	0-212-366 30 00
ING Bank A.Ş.	www.ingbank.com.tr	0-212-335 10 00
T. Ekonomi Bankası A.Ş.	www.teb.com.tr	0-212-251 21 21
T.C. Ziraat Bankası	www.ziraat.com.tr	0-212-285 22 80
T. Garanti Bankası A.Ş.	www.garanti.com.tr	0-212-318 18 18
T. Halk Bankası A.Ş.	www.halkbank.com.tr	0-212-393 05 05
T. İş Bankası A.Ş.	www.isbank.com.tr	0-212-316 00 00
T. Vakıflar Bankası T.A.O.	www.vakifbank.com.tr	0-312-455 75 75
Yapı Ve Kredi Bankası	www.ykb.com.tr	0-212-339 70 00

PUBLIC FINANCE STATISTICS

PUBLICIZED STATISTICS

STATISTICS	WEB ADDRESS
Consolidated Government Sector Balance (CGS) Consolidated Government Sector Realization Figures Cumulative Figures and Targets (2010) Monthly Figures (2010) Program Defined Central Government Primary Balance 2009 Central Budget Cumulatives 2009 Central Budget Monthly Archives 2010 2009 2008 2007 2006 2005 2004	http://www.treasury.gov.tr/irj/portal/anonymous/CGS/?guest_user=treasury
Budget Financing Statistics Central Government Budget Financing Data (2006-2011) General Budget Financing Data (2006-2011) Consolidated Budget Financing Data (1994-2005)	http://www.treasury.gov.tr/irj/portal/anonymous/BudgetFinancing/?guest_user=treasury
Treasury Cash Balance Realizations Cash Realizations-2010 Cash Realizations-2009 Cash Realizations-2008 Cash Realizations-2007 Cash Realizations-2006 Cash Realizations-2005 Cash Realizations-2004	http://www.treasury.gov.tr/irj/portal/anonymous/CashBalance/?guest_user=treasury
General Government Nominal Debt Stock Defined By European Union Standarts EUdebtstock08 Note on General Government Nominal Debt Stock Defined By European Union Standarts	http://www.treasury.gov.tr/irj/portal/anonymous/NominalDebtStockDefinedEU/?guest_user=treasury
Public Net Debt Stock Explanations - Calculation of Public Net Debt Stock Data - Public Net Debt Stock	http://www.treasury.gov.tr/irj/portal/anonymous/PublicNetDebtStock/?guest_user=treasury
Turkey's Net External Debt Stock Explanations - Calculation of Turkey's Net External Debt Stock Turkey's Net External Debt Stock	http://www.treasury.gov.tr/irj/portal/anonymous/TrNetExtDebtStock/?guest_user=treasury
Economic and Financial Data for Turkey Gross External Debt (SDDS) Central Government Debt Stock Central Government Gross Debt - Detail (2002-...) Currency and Interest Rate Composition of Outstanding Debt of Central Government (2003-...)	http://www.treasury.gov.tr/irj/portal/anonymous?NavigationTarget=navurl://81a588685fdd36b53c10120ec806f28f http://www.treasury.gov.tr/irj/portal/anonymous?NavigationTarget=navurl://81a588685fdd36b53c10120ec806f28f http://www.treasury.gov.tr/irj/portal/anonymous/CentralGovernmentDebtStock/?guest_user=treasury
Domestic Debt Statistics Domestic Debt Statistic 2011 Domestic Debt Statistic 2010 Domestic Debt Statistic 2009 Domestic Debt Statistic 2008 Domestic Debt Statistic 2007 Domestic Debt Statistic 2006 Domestic Debt Statistic 2005 Domestic Debt Statistic 2004 Domestic Debt Statistic 2003 Domestic Debt Statistic 2002 Domestic Debt Statistic 2001 Domestic Debt Statistic 2000 Domestic Debt Statistic 1999 Domestic Debt Statistic 1998 Annual Statistic	http://www.treasury.gov.tr/irj/portal/anonymous/DomesticDebt/?guest_user=treasury
External Debt Statistics I- Outstanding External Debt Statistics (2001-... Data) Announcements About Gross External Debt Statistics of Turkey Gross External Debt Statistics of Turkey II - Outstanding External Debt of Treasury Guaranteed Credits (1996-... Data) Disbursed Outstanding Debt Of Treasury Guaranteed External Credits III - BOT-BO Projects That Has Been Guaranteed By The Treasury Built-Operate-Transfer (BOT) Projects That Has Been Guaranteed By The Treasury Built-Operate (BO) Projects That Has Been Guaranteed By The Treasury External Debt Statistics Central Government Foreign Market Bond Issues (1988-...) Central Government External Debt (1986-...)-Detailed	http://www.treasury.gov.tr/irj/portal/anonymous/ExternalDebt/?guest_user=treasury
Treasury Receivable Statistics The Stock of Treasury Receivables Outstanding Overdue Receivables in Yearly Basis Overdue Receivables By Type of Resources Collections By Type of Resources Collections By Borrower Actual Collections By Type Payments Undertaken Due To The Treasury Guarantees Projected Receivable By Type of Sources	http://www.treasury.gov.tr/irj/portal/anonymous/TreasuryReceivable/?guest_user=treasury
Time Series of Debt Statistics Information On Debt Stock Statistics Central Government Foreign Market Bond Issues (1988-...) Long Term Public Sector Gross External Debt (1986-...) Gross External Debt Statistics compiled with SDDS - QUARTERLY (1989-...) Gross External Debt Statistics of Turkey - QUARTERLY (1989-...) Net External Debt Statistics of Turkey - YEARLY (1989-...) Central Government External Debt (1986-...)-Detailed Central Government Domestic Debt (1986-...)-Detailed	http://www.treasury.gov.tr/irj/portal/anonymous/TimeSeries/?guest_user=treasury

ANNEX

HOLDERS OF CENTRAL GOVERNMENT DEBT STOCK (1)

(Million TL)	2005	2006	2007	2008	2009	2010	May 2011
TOTAL DEBT STOCK	331,520	345,050	333,485	380,321	441,508	473,561	492,051
Domestic Debt Stock	244,782	251,470	255,310	274,827	330,005	352,841	362,656
Market	169,314	180,060	188,434	209,076	269,082	301,448	306,612
Public Sector	75,468	71,410	66,876	65,751	60,923	51,393	56,044
External Debt Stock	86,738	93,580	78,175	105,493	111,503	120,720	129,395
Loan	44,390	42,491	33,050	46,655	49,921	52,410	54,178
Multilateral Agencies	29,774	27,303	20,126	28,600	32,200	32,263	33,173
(IMF Credit)	19,654	15,123	8,321	12,950	11,948	8,703	7,776
SDR Allocation	0	0	0	0	2,257	2,284	2,437
Bilateral Lenders	7,066	7,136	5,744	8,375	8,516	9,751	10,202
Other	7,550	8,052	7,180	9,680	9,204	10,397	10,803
Bond Issues	42,348	51,089	45,125	58,838	61,582	68,309	75,217

(Million US Dollar)	2005	2006	2007	2008	2009	2010	May 2011
TOTAL DEBT STOCK	247,071	245,482	286,327	251,485	293,224	306,314	308,709
Domestic Debt Stock	182,428	178,906	219,207	181,728	219,170	228,228	227,527
Market	126,184	128,102	161,788	138,250	178,709	194,986	192,366
Public Sector	56,244	50,804	57,419	43,478	40,461	33,243	35,162
External Debt Stock	64,643	66,576	67,120	69,757	74,054	78,085	81,181
Loan	33,082	30,229	28,377	30,850	33,154	33,901	33,991
Multilateral Agencies	22,189	19,424	17,280	18,912	21,385	20,869	20,812
(IMF Credit)	14,647	10,759	7,144	8,563	7,935	5,629	4,878
SDR Allocation	0	0	0	0	1,499	1,478	1,529
Bilateral Lenders	5,266	5,077	4,932	5,538	5,656	6,307	6,401
Other	5,627	5,729	6,165	6,401	6,113	6,725	6,778
Bond Issues	31,560	36,347	38,744	38,907	40,899	44,185	47,190

(Percentage)	2005	2006	2007	2008	2009	2010	May 2011
TOTAL DEBT STOCK	100	100	100	100	100	100	100
Domestic Debt Stock	73.8	72.9	76.6	72.3	74.7	74.5	73.7
Market	51.1	52.2	56.5	55.0	60.9	63.7	62.3
Public Sector	22.8	20.7	20.1	17.3	13.8	10.9	11.4
External Debt Stock	26.2	27.1	23.4	27.7	25.3	25.5	26.3
Loan	13.4	12.3	9.9	12.3	11.3	11.1	11.0
Multilateral Agencies	9.0	7.9	6.0	7.5	7.3	6.8	6.7
(IMF Credit)	5.9	4.4	2.5	3.4	2.7	1.8	1.6
SDR Allocation	0.0	0.0	0.0	0.0	0.5	0.5	0.5
Bilateral Lenders	2.1	2.1	1.7	2.2	1.9	2.1	2.1
Other	2.3	2.3	2.2	2.5	2.1	2.2	2.2
Bond Issues	12.8	14.8	13.5	15.5	13.9	14.4	15.3

(GDP %)	2005	2006	2007	2008	2009	2010	May 2011
TOTAL DEBT STOCK	53.3	47.5	41.1	41.9	48.1	44.7	..
Domestic Debt Stock	37.7	33.2	30.3	28.9	34.6	31.9	..
Market	26.1	23.7	22.3	22.0	28.2	27.3	..
Public Sector	11.6	9.4	7.9	6.9	6.4	4.7	..
External Debt Stock	15.6	14.3	10.8	13.0	13.5	12.7	..
Loan	9.1	7.6	5.5	6.8	7.1	6.6	..
Multilateral Agencies	6.8	5.6	3.9	4.9	5.2	4.7	..
(IMF Credit)	4.6	3.6	2.4	3.0	3.4	2.9	..
SDR Allocation	3.0	2.0	1.0	1.4	1.3	0.8	..
Bilateral Lenders	1.1	0.9	0.7	0.9	0.9	0.9	..
Other	1.2	1.1	0.9	1.0	1.0	0.9	..
Bond Issues	6.5	6.7	5.4	6.2	6.5	6.2	..

(1) Provisional.

DOMESTIC DEBT STOCK

(Million TL)	2006	2007	2008	2009	2010	2011				
						January	February	March	April	May ⁽¹⁾
TOTAL DOMESTIC DEBT	251,470	255,310	274,827	330,005	352,841	353,286	357,453	359,900	361,953	362,656
CASH	208,376	220,582	248,691	313,232	350,379	350,824	354,992	357,439	359,493	360,196
BOND	198,783	214,448	234,713	299,196	340,854	343,034	347,202	350,865	352,919	353,621
BILL	9,594	6,134	13,978	14,036	9,525	7,790	7,790	6,575	6,575	6,575
NON-CASH	43,094	34,728	26,136	16,772	2,463	2,462	2,461	2,461	2,460	2,460
BOND	43,094	34,728	26,136	16,772	2,463	2,462	2,461	2,461	2,460	2,460
GDP	758,391	843,178	950,534	952,559	1,105,101
TOTAL DOMESTIC DEBT STOCK/GDP (%)	33,2	30,3	28,9	34,6	31,9

(1) Provisional.

FOREIGN CURRENCY DENOMINATED AND INDEXED DOMESTIC DEBT STOCK

(Million TL)	2006	2007	2008	2009	2010	2011				
						January	February	March	April	May ⁽¹⁾
Cash	32,927	24,931	22,227	17,168	5,495	5,627	5,653	5,503	5,381	4,762
USD	27,156	19,601	16,415	12,905	5,495	5,627	5,653	5,503	5,381	4,762
EURO	5,771	5,330	5,812	4,263	0	0	0	0	0	0
NON-CASH	1,744	1,211	764	0	0	0	0	0	0	0
USD	357	268	174	0	0	0	0	0	0	0
EURO	1,387	943	589	0	0	0	0	0	0	0
TOTAL	34,670	26,142	22,991	17,168	5,495	5,627	5,653	5,503	5,381	4,762

(1) Provisional.

GROSS EXTERNAL DEBT PROFILE of TURKEY

GROSS EXTERNAL DEBT (Million \$)	2002	2003	2004	2005	2006	2007	2008	2009	2010	2010 Q1
TOTAL	129,559	144,080	160,989	169,878	207,704	249,478	280,357	268,457	289,513	298,818
SHORT TERM	16,424	23,013	32,205	38,283	42,623	43,135	53,104	49,711	78,123	77,208
Public Sector	915	1,341	1,840	2,133	1,750	2,163	3,248	3,598	4,290	4,977
Central Bank	1,655	2,860	3,287	2,763	2,563	2,282	1,874	1,776	1,576	1,635
Private Sector	13,854	18,812	27,078	33,387	38,310	38,690	47,982	44,337	72,257	70,596
LONG TERM	113,135	121,067	128,784	131,595	165,081	206,343	227,253	218,746	211,390	221,610
Public Sector	63,618	69,503	73,828	68,278	69,837	71,362	75,037	79,863	84,651	88,495
Central Bank	20,348	21,513	18,123	12,662	13,115	13,519	12,192	11,529	10,251	10,633
Private Sector	29,169	30,051	36,833	50,654	82,129	121,462	140,023	127,354	116,488	122,482
PUBLIC SECTOR	64,533	70,844	75,668	70,411	71,587	73,525	78,285	83,461	88,941	93,472
Short Term	915	1,341	1,840	2,133	1,750	2,163	3,248	3,598	4,290	4,977
Long Term	63,618	69,503	73,828	68,278	69,837	71,362	75,037	79,863	84,651	88,495
CENTRAL BANK	22,003	24,373	21,410	15,425	15,678	15,801	14,066	13,305	11,827	12,268
Short Term	1,655	2,860	3,287	2,763	2,563	2,282	1,874	1,776	1,576	1,635
Long Term	20,348	21,513	18,123	12,662	13,115	13,519	12,192	11,529	10,251	10,633
PRIVATE SECTOR	43,023	48,863	63,911	84,041	120,439	160,152	188,005	171,691	188,745	193,078
Short Term	13,854	18,812	27,078	33,387	38,310	38,690	47,982	44,337	72,257	70,596
Long Term ⁽¹⁾	29,169	30,051	36,833	50,654	82,129	121,462	140,023	127,354	116,488	122,482

STOCK / GDP (%)	2002	2003	2004	2005	2006	2007	2008	2009	2010	2010 Q1
Total	56.2	47.3	41.2	35.3	39.5	38.5	37.8	43.5	39.3	..
Short Term	7.1	7.5	8.2	8.0	8.1	6.6	7.2	8.1	10.6	..
Long Term	49.1	39.7	33.0	27.3	31.4	31.8	30.6	35.5	28.7	..
Public Sector	28.0	23.2	19.4	14.6	13.6	11.3	10.6	13.5	12.1	..
Central Bank	9.5	8.0	5.5	3.2	3.0	2.4	1.9	2.2	1.6	..
Private Sector	18.7	16.0	16.4	17.5	22.9	24.7	25.3	27.8	25.7	..

PERCENTAGE SHARE OF STOCK (%)	2002	2003	2004	2005	2006	2007	2008	2009	2010	2010 Q1
Total	100	100	100	100	100	100	100	100	100	100
Short Term	12.7	16.0	20.0	22.5	20.5	17.3	18.9	18.5	27.0	25.8
Long Term	87.3	84.0	80.0	77.5	79.5	82.7	81.1	81.5	73.0	74.2
Public Sector	49.8	49.2	47.0	41.4	34.5	29.5	27.9	31.1	30.7	31.3
Central Bank	17.0	16.9	13.3	9.1	7.5	6.3	5.0	5.0	4.1	4.1
Private Sector	33.2	33.9	39.7	49.5	58.0	64.2	67.1	64.0	65.2	64.6

PERCENTAGE CHANGE IN STOCK (%)	2002	2003	2004	2005	2006	2007	2008	2009	2010	2010 Q1
Total	14.1	11.2	11.7	5.5	22.3	20.1	12.4	-4.2	7.8	3.2
Short Term	0.1	40.1	39.9	18.9	11.3	1.2	23.1	-6.4	57.2	-1.2
Long Term	16.4	7.0	6.4	2.2	25.4	25.0	10.1	-3.7	-3.4	4.8
Public Sector	36.9	9.8	6.8	-6.9	1.7	2.7	6.5	6.6	6.6	5.1
Central Bank	-9.6	10.8	-12.2	-28.0	1.6	0.8	-11.0	-5.4	-11.1	3.7
Private Sector	2.2	13.6	30.8	31.5	43.3	33.0	17.4	-8.7	9.9	2.3

(1) Since Oct 01,2001, CBRT is responsible for monitoring private sector debt.

Source : UT, CBRT, TURKSTAT

CONTINUE →

GROSS EXTERNAL DEBT PROFILE of TURKEY

FINANCIAL RATIOS (%)	2002	2003	2004	2005	2006	2007	2008	2009	2010	2010 Q1
T.EXTERNAL DEBT / EXPORTS (FOB)	359.3	304.9	254.9	231.2	242.8	232.6	212.3	262.8	254.0	250.2
EXTERNAL DEBT SERVICE / GDP	12.5	9.1	7.8	7.6	7.5	7.4	7.2	9.4	7.5	..
EXTERNAL DEBT SERVICE / EXPORTS (FOB)	80.0	58.9	48.3	50.1	45.9	44.7	40.3	57.0	48.4	43.5
PRIVATE SECTOR/ EXPORTS (FOB)	119.3	103.4	101.2	114.4	140.8	149.3	142.4	168.1	165.6	161.7
INTEREST / GDP	2.8	2.3	1.8	1.7	1.6	1.6	1.5	1.6	1.1	..
INTEREST / EXPORTS (FOB)	17.8	14.8	11.3	10.9	10.0	9.4	8.6	9.7	7.3	6.6
INTERNATIONAL RESERVES (NET) / T. EXTERNAL DEBT	21.7	24.4	23.4	30.9	30.5	30.6	26.5	27.9	29.7	30.8
INTERNATIONAL RESERVES (NET) / SHORT TERM DEBT	170.9	152.8	116.9	137.0	148.5	177.2	139.8	150.5	110.1	119.4
INTERNATIONAL RESERVES (GROSS) / T. EXTERNAL DEBT	20.7	23.3	22.4	29.7	29.3	29.4	25.3	26.3	27.9	29.0
INTERNATIONAL RESERVES (GROSS) / SHORT TERM DEBT	163.2	146.1	111.8	132.0	142.9	170.0	133.7	142.3	103.3	112.4
CBRT RESERVES (GROSS) / IMPORTS (CIF)	52.0	48.5	36.9	43.3	43.6	43.1	35.2	50.2	43.5	42.7
CBRT RESERVES (NET) / IMPORTS (CIF)	54.4	50.7	38.6	44.9	45.3	44.9	36.8	53.1	46.3	45.4
CURRENT ACCOUNT DEFICIT / CBRT RESERVES (GROSS)	-2.3	-22.4	-40.1	-44.2	-52.9	-52.4	-59.1	-19.8	-59.0	-69.2
CURRENT ACCOUNT DEFICIT / CBRT RESERVES (NET)	-2.2	-21.4	-38.3	-42.6	-51.0	-50.3	-56.5	-18.7	-55.4	-65.2
CURRENT ACCOUNT DEFICIT / GDP	-0.3	-2.5	-3.7	-4.6	-6.1	-5.9	-5.7	-2.3	-6.5	..

MACRO ECONOMIC AGGREGATES (Million \$)	2002	2003	2004	2005	2006	2007	2008	2009	2010	2010 Q1
GDP (Million \$)	230,494	304,901	390,387	481,497	526,429	648,754	741,754	616,753	735,828	..
EXPORTS (FOB) ^{(2) (3)}	36,059	47,253	63,167	73,476	85,535	107,272	132,028	102,143	113,981	119,420
IMPORTS (CIF) ⁽³⁾	51,554	69,340	97,540	116,774	139,576	170,063	201,964	140,929	185,542	203,103
CURRENT ACCOUNT DEFICIT ⁽³⁾	-626	-7,515	-14,431	-22,309	-32,249	-38,434	-41,959	-13,991	-47,639	-60,077
INTERNATIONAL RESERVES (GROSS)	26,807	33,616	36,009	50,515	60,912	73,317	71,008	70,716	80,721	86,796
INTERNATIONAL RESERVES (NET)	28,071	35,162	37,643	52,429	63,285	76,439	74,236	74,836	85,984	92,152
CREDIT DISBURSEMENT ^{(3) (4)}	28,123	16,325	22,828	34,003	51,390	64,118	67,557	36,420	39,908	43,245
EXTERNAL DEBT SERVICE ^{(3) (4)}	28,852	27,810	30,488	36,803	39,264	47,991	53,154	58,248	55,148	51,946
PRINCIPAL	22,450	20,823	23,340	28,769	30,708	37,873	41,807	48,372	46,816	44,044
INTEREST	6,402	6,987	7,148	8,034	8,556	10,118	11,347	9,876	8,332	7,902

(2) Excluding Shuttle Trade and Other Goods.

(3) 12-months' total.

(4) The principal payments of the short term debt are excluded from the debt service data, The bond issue amounts are excluded from the disbursement data.

Source : UT, CBRT, TURKSTAT

GROSS EXTERNAL DEBT OF TURKEY - by BORROWER

	2008				2009				2010				2011	
	Q1	Q2	Q3	Q4	Q1	Q2	Q3	Q4	Q1	Q2	Q3	Q4	Q1	Q1
TOTAL	264,425	286,388	291,336	280,357	265,242	267,350	270,552	268,457	266,876	265,100	282,640	289,513	298,818	
SHORT TERM	45,839	53,128	57,569	53,104	47,201	46,830	47,978	49,711	54,537	61,059	68,658	78,123	77,208	
PUBLIC SECTOR	2,336	1,729	3,139	3,248	2,732	2,910	3,397	3,598	4,697	5,605	7,002	4,290	4,977	
FINANCIAL INSTITUTIONS	2,336	1,629	3,039	3,148	2,632	2,910	3,397	3,598	4,697	5,605	7,002	4,290	4,977	
Banks	2,336	1,629	3,039	3,148	2,632	2,910	3,397	3,598	4,697	5,605	7,002	4,290	4,977	
NON-FINANCIAL INSTITUTIONS	0	100	100	100	100	0	0	0	0	0	0	0	0	
SOE's	0	100	100	100	100	0	0	0	0	0	0	0	0	
CBRT	2,357	2,273	1,980	1,874	1,723	1,801	1,816	1,776	1,669	1,511	1,633	1,576	1,635	
Dresdner Bank Scheme	2,356	2,272	1,979	1,873	1,722	1,800	1,815	1,775	1,668	1,510	1,632	1,575	1,634	
Other	1	1	1	1	1	1	1	1	1	1	1	1	1	
PRIVATE SECTOR	41,146	49,126	52,450	47,982	42,746	42,119	42,765	44,337	48,171	53,943	60,023	72,257	70,596	
FINANCIAL INSTITUTIONS	17,159	22,068	24,939	24,489	20,779	20,623	21,201	22,554	26,675	31,994	37,935	48,318	46,500	
Banks	16,632	21,561	24,494	24,269	20,535	20,368	20,892	22,253	26,340	31,603	37,393	47,287	45,271	
Non-Banking Institutions	527	507	445	220	244	255	309	301	335	391	542	1,031	1,229	
NON-FINANCIAL INSTITUTIONS	23,987	27,058	27,511	23,493	21,967	21,496	21,564	21,783	21,496	21,949	22,088	23,939	24,096	
LONG TERM	218,586	233,260	233,767	227,253	218,041	220,520	222,574	218,746	212,339	204,041	213,982	211,390	221,610	
PUBLIC SECTOR	72,180	76,071	75,790	75,037	73,499	75,357	80,157	79,863	80,324	79,218	84,373	84,651	88,495	
GENERAL GOVERNMENT	69,735	73,486	73,181	72,362	71,123	72,945	77,646	77,139	77,710	76,695	81,456	81,614	85,137	
Central Government	67,819	71,251	70,889	69,757	68,469	70,161	74,653	74,054	74,472	73,529	77,906	78,085	81,445	
Local Administrations	1,737	2,074	2,137	2,466	2,523	2,670	2,885	2,993	3,153	3,098	3,487	3,468	3,633	
Funds	179	161	154	138	131	114	108	91	85	69	63	61	60	
FINANCIAL INSTITUTIONS	676	720	562	590	613	796	907	1,116	1,266	1,275	1,581	1,741	2,011	
Banks	676	720	562	590	613	796	907	1,116	1,266	1,275	1,581	1,741	2,011	
NON-FINANCIAL INSTITUTIONS	1,769	1,865	2,047	2,086	1,764	1,616	1,604	1,609	1,348	1,248	1,336	1,296	1,347	
SOE's	1,628	1,721	1,900	1,892	1,582	1,434	1,425	1,437	1,191	1,100	1,192	1,155	1,214	
Other	140	144	147	194	182	182	179	172	157	148	145	141	133	
CBRT	14,233	13,931	12,359	12,192	11,284	11,786	11,818	11,529	10,876	9,873	10,687	10,251	10,633	
Dresdner Bank Scheme	14,223	13,921	12,350	12,183	11,275	11,777	11,809	11,520	10,867	9,864	10,678	10,242	10,624	
NGTA	10	10	9	9	9	9	9	9	9	9	9	9	9	
PRIVATE SECTOR	132,173	143,258	145,618	140,023	133,257	133,377	130,599	127,354	121,139	114,950	118,922	116,488	122,482	
FINANCIAL INSTITUTIONS	44,426	45,680	45,950	41,203	38,084	37,329	36,446	35,438	33,274	32,287	33,894	34,478	37,365	
Banks	32,905	33,862	34,136	30,010	28,247	27,734	27,759	27,938	26,843	26,552	28,067	28,609	31,054	
Non-Banking Institutions	11,521	11,818	11,814	11,193	9,836	9,596	8,687	7,500	6,430	5,735	5,827	5,869	6,311	
NON-FINANCIAL INSTITUTIONS	87,748	97,578	99,667	98,820	95,174	96,048	94,153	91,916	87,866	82,663	85,028	82,010	85,117	

GROSS EXTERNAL DEBT of TURKEY - by LENDER

	(Million US Dollar)													
	2008				2009				2010				2011	
	Q1	Q2	Q3	Q4	Q1	Q2	Q3	Q4	Q1	Q2	Q3	Q4	Q1	Q2
TOTAL	264,425	286,388	291,336	280,356	265,242	267,350	270,552	268,457	266,876	265,100	282,640	289,513	298,818	289,513
LOAN	225,690	247,185	251,535	241,450	226,096	227,088	229,486	227,558	224,948	223,392	237,841	244,128	249,634	244,128
SHORT TERM	45,859	53,128	57,569	53,104	47,201	46,830	47,978	49,711	54,537	61,059	68,658	78,123	77,208	78,123
PRIVATE CREDITORS	45,859	53,128	57,569	53,104	47,201	46,830	47,978	49,711	54,537	61,059	68,658	78,123	77,208	78,123
MONETARY INSTITUTIONS	16,875	21,016	25,453	24,494	20,137	19,873	20,167	21,177	26,216	33,245	40,399	48,802	47,429	48,802
NONMONETARY INSTITUTIONS	28,984	32,112	32,116	28,610	27,064	26,957	27,811	28,534	28,321	27,814	28,259	29,321	29,779	29,321
LONG TERM	179,851	194,057	193,966	188,346	178,895	180,258	181,508	177,847	170,411	162,333	169,183	166,005	172,426	166,005
PRIVATE CREDITORS	149,191	160,306	160,276	154,541	146,364	146,044	143,487	139,264	132,686	125,089	128,672	125,428	130,158	125,428
MONETARY INSTITUTIONS	126,348	135,989	137,213	131,950	125,078	123,885	121,341	117,363	111,290	104,707	107,223	104,460	108,421	104,460
NONBANK FINANCIAL INSTITUTIONS	7,003	6,781	6,769	6,644	6,592	6,720	6,699	6,458	6,133	5,679	5,929	5,865	5,920	5,865
PRIVATE INVESTMENT & DEV BANKS	48	48	46	40	35	37	38	36	35	33	35	35	8	35
FOREIGN COMMERCIAL BANKS	80,538	85,661	84,751	80,758	76,530	75,684	75,488	72,847	69,038	66,676	69,209	67,309	70,918	67,309
FOREIGN BRANCHES OF DOMESTIC BANKS AND OTHERS	38,759	43,499	45,647	44,508	41,920	41,445	39,117	38,022	36,085	32,319	32,050	31,278	31,576	31,278
NONMONETARY INSTITUTIONS	22,843	24,318	23,063	22,591	21,286	22,159	22,146	21,900	21,395	20,381	21,449	20,969	21,737	20,969
OFFICIAL CREDITORS	30,659	33,751	33,690	33,805	32,531	34,214	38,021	38,583	37,725	37,244	40,511	40,577	42,268	40,577
GOVERNMENTAL ORGANIZATIONS	7,168	6,872	6,752	7,297	7,028	7,202	7,540	7,572	7,499	7,393	7,935	8,096	8,295	8,096
PUBLIC FINANCE INSTITUTIONS	1,425	1,489	1,458	1,681	1,698	1,928	2,104	2,121	2,055	2,009	2,100	2,093	2,130	2,093
CENTRAL GOVERNMENTS	838	775	711	635	585	563	561	497	460	394	410	365	366	365
OFFICIAL DEVELOPMENT BANKS	4,905	4,609	4,583	4,981	4,745	4,712	4,875	4,953	4,984	4,990	5,425	5,638	5,799	5,638
MULTILATERAL ORGANIZATIONS	23,492	26,878	26,938	26,508	25,504	27,012	30,481	31,011	30,225	29,851	32,576	32,482	33,973	32,482
IMF-INTERNATIONAL MONETARY FUND	6,940	10,046	9,268	8,563	7,569	7,865	9,524	9,434	9,173	8,230	7,912	7,107	6,728	7,107
SDR ALLOCATIONS	0	0	0	0	0	0	1,513	1,499	1,458	1,415	1,489	1,478	1,511	1,478
IBRD	7,814	7,781	8,127	8,013	8,305	8,602	9,819	9,766	9,586	10,154	11,571	11,518	12,100	11,518
OTHER MULTILATERAL INST.	8,737	9,051	9,543	9,932	9,630	10,546	11,138	11,811	11,466	11,467	13,093	13,856	15,144	13,856
BONDS (1)	38,735	39,203	39,800	38,907	39,145	40,262	41,066	40,899	41,929	41,708	44,799	45,385	49,184	45,385

(1) All the bonds issued in foreign markets are long term securities and the lender class of the bonds is "financial institutions" according to the primary market issuance.

DEBT STOCK OF BONDS ISSUED in FOREIGN MARKETS - by BORROWER AND CURRENCY

(Million US Dollar)	2008				2009				2010				2011	
	Q1	Q2	Q3	Q4	Q1	Q2	Q3	Q4	Q1	Q2	Q3	Q4	Q1	Q1
TOTAL BOND STOCK	38,735	39,203	39,800	38,907	39,145	40,262	41,066	40,899	41,929	41,708	44,799	45,385	49,184	
Public Sector Total	38,735	39,203	39,800	38,907	39,145	40,262	41,066	40,899	41,929	41,708	43,799	44,185	46,984	
Central Government	38,735	39,203	39,800	38,907	39,145	40,262	41,066	40,899	41,929	41,708	43,799	44,185	46,984	
Euro Bonds	12,394	12,362	11,459	11,112	10,351	11,014	10,568	10,402	8,431	9,458	10,549	10,935	10,568	
JPY	0	0	0	0	0	0	0	0	0	0	0	0	2,166	
USD	26,341	26,841	28,341	27,794	28,794	29,248	30,498	30,498	33,498	32,250	33,250	33,250	34,250	
Private Sector	0	0	0	0	0	0	0	0	0	0	1,000	1,200	2,200	
Banks	0	0	0	0	0	0	0	0	0	0	1,000	1,200	2,200	
Global Bonds	0	0	0	0	0	0	0	0	0	0	1,000	1,200	2,200	

GROSS EXTERNAL DEBT of TURKEY - CURRENCY COMPOSITION

TOTAL

(Million US Dollar)	2008				2009				2010				2011
	Q1	Q2	Q3	Q4	Q1	Q2	Q3	Q4	Q1	Q2	Q3	Q4	Q1
TOTAL	264,425	286,388	291,336	280,357	265,242	267,350	270,552	268,457	266,876	265,100	282,640	289,513	298,818
CHF	1,274	1,258	1,157	1,165	1,111	1,134	1,139	1,091	1,039	1,022	1,083	1,196	1,142
ECU/EUR	94,244	100,591	100,355	97,096	90,801	96,011	98,584	96,134	90,790	87,545	98,180	99,357	106,845
GBP	839	627	629	680	610	696	624	615	733	791	811	892	1,086
JPY	3,408	3,319	3,391	3,940	3,680	3,678	3,914	3,803	3,872	4,288	4,555	4,905	6,918
SDR	6,946	10,051	9,274	8,573	7,578	7,876	9,537	9,447	9,186	8,241	7,926	7,123	6,745
USD	144,587	155,159	159,556	152,413	149,079	143,466	141,321	141,381	143,028	142,630	144,671	148,637	153,333
TL	12,655	14,940	16,545	16,086	11,998	14,097	15,044	15,601	17,823	20,180	24,970	26,930	22,204
Other	473	444	428	404	385	393	389	384	406	404	444	473	545

SHORT TERM

(Million US Dollar)	2008				2009				2010				2011
	Q1	Q2	Q3	Q4	Q1	Q2	Q3	Q4	Q1	Q2	Q3	Q4	Q1
Total / TOTAL	45,839	53,128	57,569	53,104	47,201	46,830	47,978	49,711	54,537	61,059	68,658	78,123	77,208
CHF	225	208	185	149	201	213	227	224	221	248	255	368	337
ECU/EUR	13,573	15,377	17,840	15,825	14,553	14,775	15,190	14,239	15,773	16,413	18,429	20,440	23,285
GBP	664	526	540	614	542	613	557	546	680	659	672	752	933
JPY	213	363	313	280	239	221	233	168	156	312	207	263	210
USD	25,786	29,485	30,291	26,598	25,188	22,805	22,425	24,342	25,160	28,314	29,900	34,326	35,393
TL	5,333	7,130	8,360	9,607	6,452	8,176	9,314	10,160	12,509	15,076	19,151	21,932	16,998
Other	45	39	40	31	26	27	32	32	38	37	44	42	52

LONG TERM

(Million US Dollar)	2008				2009				2010				2011
	Q1	Q2	Q3	Q4	Q1	Q2	Q3	Q4	Q1	Q2	Q3	Q4	Q1
Total / TOTAL	218,586	233,260	233,767	227,253	218,041	220,520	222,574	218,746	212,339	204,041	213,982	211,390	221,610
CHF	1,049	1,050	972	1,016	910	921	912	867	818	774	828	828	805
ECU/EUR	80,671	85,214	82,515	81,271	76,248	81,236	83,394	81,895	75,017	71,132	79,751	78,917	83,560
GBP	175	101	89	66	68	83	67	69	53	132	139	140	153
JPY	3,195	2,956	3,078	3,660	3,441	3,457	3,681	3,635	3,716	3,976	4,348	4,642	6,708
SDR	6,946	10,051	9,274	8,573	7,578	7,876	9,537	9,447	9,186	8,241	7,926	7,123	6,745
USD	118,801	125,674	129,265	125,815	123,891	120,661	118,896	117,039	117,868	114,316	114,771	114,311	117,940
TL	7,322	7,810	8,185	6,479	5,546	5,921	5,730	5,441	5,314	5,104	5,819	4,998	5,206
Other	428	405	388	373	359	366	357	352	368	367	400	431	493

CHANGE in GROSS EXTERNAL DEBT of TURKEY - EXCHANGE RATE EFFECT (1)

TOTAL

(Million US Dollar)	2008				2009				2010				2011
	Q1	Q2	Q3	Q4	Q1	Q2	Q3	Q4	Q1	Q2	Q3	Q4	Q1
Total / TOTAL	6,174	5	-7,902	-5,786	-9,020	7,568	4,604	-1,988	-6,246	-9,382	12,677	-4,034	6,356
CHF	141	-30	-78	36	-95	63	56	-1	-24	-24	116	43	21
ECU/EUR	6,522	-247	-7,345	-3,038	-6,653	5,820	3,738	-1,555	-5,748	-8,648	10,100	-2,583	6,267
GBP	2	-3	-46	-133	-15	102	-26	-2	-32	-1	39	-18	34
JPY	382	-203	31	570	-259	43	230	-101	-15	166	263	117	-95
SDR	302	-58	-363	-141	-312	296	146	-90	-261	-268	432	-62	163
TL	-1,185	546	-96	-3,073	-1,674	1,238	457	-237	-162	-602	1,717	-1,531	-40
Other	10	0	-7	-8	-13	6	3	-1	-4	-5	10	1	6

SHORT TERM

(Million US Dollar)	2008				2009				2010				2011
	Q1	Q2	Q3	Q4	Q1	Q2	Q3	Q4	Q1	Q2	Q3	Q4	Q1
Total / TOTAL	484	173	-1,216	-2,148	-2,127	1,703	842	-396	-990	-1,923	3,256	-1,660	1,284
CHF	29	-5	-13	6	-12	10	11	0	-5	-5	29	10	6
ECU/EUR	977	-38	-1,122	-540	-1,084	933	576	-240	-851	-1,502	1,894	-486	1,288
GBP	1	-3	-39	-114	-13	91	-23	-1	-27	-1	32	-15	28
JPY	22	-12	4	53	-18	3	13	-6	-1	7	19	5	-6
TL	-545	230	-46	-1,554	-1,000	666	265	-147	-105	-422	1,283	-1,174	-32
Other	0	0	0	0	0	0	0	0	0	0	0	0	0

LONG TERM

(Million US Dollar)	2008				2009				2010				2011
	Q1	Q2	Q3	Q4	Q1	Q2	Q3	Q4	Q1	Q2	Q3	Q4	Q1
Total / TOTAL	5,690	-168	-6,686	-3,638	-6,893	5,866	3,762	-1,592	-5,256	-7,459	9,421	-2,374	5,072
CHF	113	-26	-65	29	-83	52	46	0	-20	-19	88	33	15
ECU/EUR	5,544	-209	-6,223	-2,498	-5,569	4,887	3,162	-1,315	-4,897	-7,146	8,206	-2,098	4,978
GBP	1	0	-7	-19	-1	12	-3	-1	-4	0	7	-3	5
JPY	360	-190	28	517	-241	40	217	-95	-14	159	244	113	-89
SDR	302	-58	-363	-141	-312	296	146	-90	-261	-268	432	-62	163
TL	-639	316	-50	-1,519	-674	572	192	-90	-57	-180	434	-357	-7
Other	10	0	-7	-8	-13	6	3	-1	-4	-5	10	1	6

(1) The figures represents the changes occur in the relevant quarter.

CHANGE in GROSS EXTERNAL DEBT of TURKEY

TOTAL

(Million US Dollar)	2008				2009				2010				2011
	Q1	Q2	Q3	Q4	Q1	Q2	Q3	Q4	Q1	Q2	Q3	Q4	Q1
Total / TOTAL	14,947	21,963	4,947	-10,979	-15,115	2,109	3,202	-2,095	-1,581	-1,776	17,540	6,872	9,305
CHF	226	-16	-101	9	-54	22	5	-47	-53	-17	61	113	-54
ECU/EUR	7,704	6,347	-236	-3,260	-6,295	5,210	2,573	-2,451	-5,344	-3,245	10,635	1,177	7,489
GBP	-32	-212	3	51	-70	86	-72	-8	118	57	20	82	194
JPY	481	-89	72	549	-260	-2	236	-111	69	416	268	350	2,013
SDR	-204	3,105	-777	-701	-995	298	1,661	-90	-261	-945	-316	-803	-378
USD	7,652	10,572	4,398	-7,144	-3,334	-5,613	-2,145	61	1,646	-398	2,041	3,966	4,696
TL	-877	2,285	1,606	-459	-4,088	2,099	947	557	2,221	2,357	4,791	1,959	-4,726
Other	-3	-29	-16	-23	-19	8	-4	-5	22	-2	41	29	71

SHORT TERM

(Million US Dollar)	2008				2009				2010				2011
	Q1	Q2	Q3	Q4	Q1	Q2	Q3	Q4	Q1	Q2	Q3	Q4	Q1
Total / TOTAL	2,704	7,289	4,441	-4,465	-5,903	-371	1,148	1,733	4,826	6,522	7,599	9,465	-915
CHF	12	-17	-23	-36	52	12	14	-3	-3	27	7	113	-31
ECU/EUR	626	1,804	2,463	-2,015	-1,272	222	415	-951	1,534	640	2,016	2,011	2,845
GBP	-26	-138	14	74	-72	71	-56	-11	134	-21	13	80	181
JPY	41	150	-50	-33	-41	-18	12	-65	-12	156	-105	56	-53
USD	2,948	3,699	806	-3,693	-1,410	-2,383	-380	1,917	818	3,154	1,586	4,426	1,067
TL	-899	1,797	1,230	1,247	-3,155	1,724	1,138	846	2,349	2,567	4,075	2,781	-4,934
Other	2	-6	1	-9	-5	1	5	0	6	-1	7	-2	10

LONG TERM

(Million US Dollar)	2008				2009				2010				2011
	Q1	Q2	Q3	Q4	Q1	Q2	Q3	Q4	Q1	Q2	Q3	Q4	Q1
Total / TOTAL	12,243	14,674	506	-6,514	-9,212	2,480	2,054	-3,828	-6,407	-8,298	9,941	-2,593	10,220
CHF	214	1	-78	45	-106	10	-9	-44	-50	-44	54	0	-23
ECU/EUR	7,078	4,543	-2,699	-1,245	-5,023	4,988	2,158	-1,500	-6,878	-3,885	8,619	-834	4,644
GBP	-6	-74	-11	-23	2	15	-16	3	-16	78	7	2	13
JPY	440	-239	122	582	-219	16	224	-46	81	260	373	294	2,066
SDR	-204	3,105	-777	-701	-995	298	1,661	-90	-261	-945	-316	-803	-378
USD	4,704	6,873	3,592	-3,451	-1,924	-3,230	-1,765	-1,856	828	-3,552	455	-460	3,629
TL	22	488	376	-1,706	-933	375	-191	-289	-128	-210	716	-822	208
Other	-5	-23	-17	-14	-14	7	-9	-5	16	-1	34	31	61

(1) As the payments of the SPU and CPU liabilities were done in American Dollars, such liabilities are classified under USD.

TREASURY GUARANTEED EXTERNAL DEBT STOCK (1)

BORROWER (Million US Dollar)	2002	2003	2004	2005	2006	2007	2008	2009	2010	2011 M
PUBLIC	6,101	5,495	4,502	3,260	2,397	2,567	3,043	3,777	4,331	4,735
GENERAL GOVERNMENT	2,067	1,800	1,510	1,151	1,023	1,004	1,217	1,279	1,335	1,383
CENTRAL GOVERNMENT	25	15	5	0	0	0	0	0	0	0
PRIVATIZATION ADMINISTRATION	25	15	5	0	0	0	0	0	0	0
LOCAL ADMINISTRATIONS	1,421	1,250	1,087	833	775	818	1,079	1,189	1,274	1,323
MUNICIPALITY OF ADANA GREATER CITY	173	152	130	108	126	157	210	212	177	167
MUNICIPALITY OF ADAPAZARI GREATER CITY	36	35	28	16	9	0	0	0	0	0
MUNICIPALITY OF ANKARA GREATER CITY	87	66	47	26	7	0	0	0	0	0
MUNICIPALITY OF ANTALYA GREATER CITY	0	0	0	0	0	30	84	85	79	84
ASAT - ANTALYA WATER AND SEWERAGE ADMINISTRATION	89	80	72	64	56	48	40	31	23	23
ASKI - ADANA WATER AND SEWERAGE ADMINISTRATION	31	35	55	44	44	44	38	33	26	27
ASKI - ANKARA WATER AND SEWERAGE ADMINISTRATION	72	61	49	35	28	21	15	10	5	5
MUNICIPALITY OF BAFRA	3	0	0	0	0	0	0	0	0	0
MUNICIPALITY OF BANDIRMA	22	17	13	11	9	8	6	4	2	1
MUNICIPALITY OF BURSA GREATER CITY	91	70	47	20	18	16	68	65	110	117
BUSKI - BURSA WATER AND SEWERAGE ADMINISTRATION	65	76	105	120	131	127	107	92	73	77
CESME AND ALACATI MUNICIPALITIES UNION	4	4	6	6	6	5	4	4	3	3
MUNICIPALITY OF DALAMAN	11	9	5	0	0	0	0	0	0	0
MUNICIPALITY OF DIDIM	24	16	7	5	3	1	0	0	0	0
EGO - ELECTRICITY, GAS AND OMNIBUS AUTH. OF (ANKARA)	133	116	85	42	19	5	0	0	0	0
MUNICIPALITY OF ESKISEHIR GREATER CITY	25	74	122	125	131	149	170	164	150	154
MUNICIPALITY OF FOCA	4	6	7	5	5	4	3	3	2	2
GASKI - GAZIANTEP WATER AND SEWERAGE ADMINISTRATION	25	15	7	6	6	5	3	3	2	2
MUNICIPALITY OF ISKENDERUN	23	15	7	2	1	0	0	0	0	0
ISKI - ISTANBUL WATER AND SEWERAGE ADMINISTRATION	78	55	22	11	7	3	0	0	0	0
METROPOLITAN MUNICIPALITY OF ISTANBUL	123	108	89	65	82	69	78	153	181	178
MUNICIPALITY OF IZMIR GREATER CITY	166	131	95	60	27	9	55	52	129	137
MUNICIPALITY OF IZMIT GREATER CITY	81	81	71	47	35	33	26	20	12	13
IZSU - IZMIR WATER AND SEWERAGE ADMINISTRATION	7	2	0	0	0	0	0	0	0	0
MUNICIPALITY OF KAYSERI GREATER CITY	0	0	0	0	14	54	89	119	101	107
MARIC - MARMARIS MUNICIPALITIES UNION	43	19	6	4	3	1	0	0	0	0
MERSIN WATER & SEWERAGE ADMINISTRATION	0	0	0	0	0	24	66	84	72	77
MUNICIPALITY OF MILAS	0	6	11	10	7	4	2	1	0	0
MUNICIPALITY OF SAMSUN GREATER CITY	0	0	0	0	0	0	14	54	128	149
MUNICIPALITY OF YOZGAT	5	2	0	0	0	0	0	0	0	0
FUNDS	621	534	418	318	248	187	138	91	61	60
T. DEFENSE INDUSTRY SUPPORT FUND	621	534	418	318	248	187	138	91	61	60
FINANCIAL INSTITUTIONS	439	413	306	222	195	320	583	1,218	1,833	2,130
PUBLIC BANKS	439	413	306	222	195	320	583	1,218	1,833	2,130
GENERAL DIRECTORATE OF ILLER BANK	0	0	0	0	2	10	62	143	222	254
T. HALK BANK INC.	0	0	0	25	84	185	349	696	1,034	1,177
T. EXIMBANK INC.	420	400	296	181	74	53	51	124	123	129
T. DEVELOPMENT BANK INC.	19	14	10	16	35	70	121	255	412	499
T.C. ZIRAAT BANK INC.	0	0	0	0	0	1	0	0	41	71
NON FINANCIAL INSTITUTIONS	3,595	3,282	2,687	1,887	1,180	1,242	1,242	1,280	1,163	1,222
SOEs	3,478	3,188	2,613	1,837	1,140	1,212	1,222	1,267	1,155	1,214
BOTAS - T. PETROLEUM PIPELINE CORP.	560	342	138	85	73	66	59	55	50	50
EREGLI IRON & STEEL WORKS INC.	65	44	21	8	0	0	0	0	0	0
EUAS-ELECTRICITY PRODUCTION INC.	1,144	1,306	1,147	927	876	812	677	557	435	430
TCDD T. STATE RAILWAYS	67	41	31	22	15	8	3	2	1	1
TEDAŞ-T. ELECTRICITY DISTRIBUTION INC.	0	0	0	0	0	88	206	325	336	385
TEIAS - T. ELECTRICITY TRANSMISSION INC.	152	131	136	148	177	238	277	328	334	348
THY - TURKISH AIRLINES	36	36	34	0	0	0	0	0	0	0
TKI - T. COAL CORP.	1,197	1,024	859	572	0	0	0	0	0	0
TPAO - T. PETROLEUM CORPORATION	7	5	2	0	0	0	0	0	0	0
TUGSAS - T. FERTILIZER IND. INC.	0	59	59	75	0	0	0	0	0	0
TURKISH TELECOM INC.	26	10	3	0	0	0	0	0	0	0
TUPRAS - T. PETROLEUM RAFINERIES INC.	224	188	183	0	0	0	0	0	0	0
OTHER	117	94	74	50	39	30	21	13	8	8
IZGAZ - IZMIT GAS DISTRIBUTION COMPANY	32	28	22	11	4	0	0	0	0	0
ISTANBUL OLIMPIC GAMES PREPERATION & ORGANIZING BOARD	85	67	52	39	35	30	21	13	8	8
PRIVATE	178	348	805	1,121	1,905	2,304	2,669	2,840	3,110	3,200
FINANCIAL INSTITUTIONS	178	348	805	959	1,373	1,894	2,373	2,653	3,014	3,123
BANKS	178	348	805	959	1,373	1,894	2,373	2,653	3,014	3,123
TVB- T. FOUNDATION BANK	50	125	293	288	360	486	537	522	538	575
TSKB- T. INDUSTRIAL DEVELOPMENT BANK INC.	128	223	512	671	1,013	1,409	1,837	2,131	2,476	2,548
NON FINANCIAL INSTITUTIONS	0	0	0	161	532	409	296	187	96	77
EREGLI IRON & STEEL WORKS INC.	0	0	0	0	2	0	0	0	0	0
TURKISH TELECOM	0	0	0	27	0	0	0	0	0	0
THY - TURKISH AIRLINES	0	0	0	0	443	357	265	163	77	62
TUPRAS - TURKISH PETROLEUM RAFINERIES	0	0	0	134	88	52	31	24	18	15
TOTAL	6,280	5,843	5,307	4,381	4,303	4,870	5,712	6,618	7,440	7,935
Total Stock/GDP (%)	2.7	1.9	1.4	0.9	0.8	0.7	0.8	1.1	1.0	..

(1) Provisional.

PAYMENTS UNDERTAKEN DUE TO TREASURY GUARANTEES (1)

BORROWER (Million US Dollar)	2002	2003	2004	2005	2006	2007	2008	2009	2010	2011 ⁽²⁾
GRAND TOTAL	1,120	672	448	341	337	332	276	210	140	53
GUARANTEED EXTERNAL DEBT	907	478	300	213	211	201	137	171	62	20
PUBLIC	907	478	300	213	211	201	137	171	62	20
GENERAL GOVERNMENT	471	319	254	194	138	85	54	50	57	20
CENTRAL GOVERNMENT	12	12	11	0	0	0	0	0	0	0
PRIVATIZATION ADMINISTRATION	12	12	11	0	0	0	0	0	0	0
LOCAL ADMINISTRATIONS	458	308	243	194	138	85	54	50	57	20
MUNICIPALITY OF ADANA GREATER CITY	88	26	25	26	23	27	27	28	38	11
MUNICIPALITY OF ADAPAZARI GREATER CITY	8	9	10	10	9	10	0	0	0	0
MUNICIPALITY OF ANKARA GREATER CITY	47	26	23	22	21	7	0	0	0	0
ASAT - ANTALYA WATER AND SEWERAGE ADMINISTRATION	10	10	3	6	11	11	9	9	9	5
ASKI - ANKARA WATER AND SEWERAGE ADMINISTRATION	15	20	0	0	0	0	0	0	0	0
MUNICIPALITY OF BAFRA	5	3	0	0	0	0	0	0	0	0
MUNICIPALITY OF BANDIRMA	7	6	5	3	4	1	2	2	2	1
MUNICIPALITY OF BURSA GREATER CITY	49	40	28	22	0	0	0	0	0	0
MUNICIPALITY OF DALAMAN	12	4	5	5	0	0	0	0	0	0
MUNICIPALITY OF DIDIM	10	9	9	2	2	2	1	0	0	0
EGO ELECTRICITY, GAS & OMNIBUS AUTH. OF ANKARA	37	41	42	37	27	16	5	0	0	0
MUNICIPALITY OF FOÇA	0	0	1	1	1	0	0	0	0	0
GASKI- GAZIANTEP WATER AND SEWERAGE ADMINISTRATION	11	10	10	0	0	0	0	0	0	0
MUNICIPALITY OF İSKENDERUN	9	10	9	5	1	1	0	0	0	0
ISKI - ISTANBUL WATER AND SEWERAGE ADMINISTRATION	29	0	0	0	0	0	0	0	0	0
MUNICIPALITY OF IZMIR GREATER CITY	66	41	39	35	16	0	0	0	0	0
MUNICIPALITY OF IZMIT GREATER CITY	15	17	18	17	18	7	7	4	7	3
IZSU - IZMIR WATER AND SEWERAGE AUTHORITY	5	5	3	0	0	0	0	0	0	0
MUNICIPALITY OF KAYSERİ GREATER CITY	0	0	0	0	0	0	0	5	0	0
MARIC MARMARIS - ICMELER-ARMUTALAN MUNICIPALITIES	28	26	13	1	2	2	1	0	0	0
MUNICIPALITY OF MENEMEN	2	0	0	0	0	0	0	0	0	0
MUNICIPALITY OF MILAS	0	0	0	2	3	3	1	2	0	0
MUNICIPALITY OF YOZGAT	3	4	2	0	0	0	0	0	0	0
NON - FINANCIAL INSTITUTIONS	437	158	45	18	74	116	83	121	6	0
SOEs	398	115	15	9	65	111	83	112	1	0
BOTAS - T. PETROLEUM PIPELINE CORP.	72	0	0	0	0	0	0	0	0	0
EUAS - ELECTRICITY PRODUCTION INC.	131	27	0	0	57	102	78	87	0	0
TCDD - T. STATE RAILWAYS	30	34	15	9	9	9	5	1	1	0
TEIAS - T.ELECTRICITY TRANSMISSION INC.	66	54	0	0	0	0	0	25	0	0
TMO - SOIL PRODUCTS OFFICE	98	0	0	0	0	0	0	0	0	0
OTHER	39	43	31	9	9	4	0	9	4	0
IZGAZ - IZMIT GAS DISTRIBUTION COMP.	14	11	10	9	9	4	0	0	0	0
ISTANBUL OLIMPIC GAMES PREPARATION & ORGANIZING BOARD	25	32	21	0	0	0	0	9	4	0
BOT PRODUCT SALE GUARANTEES	213	194	148	128	125	131	139	39	78	33
PUBLIC	213	194	148	128	125	131	139	39	78	33
GENERAL GOVERNMENT	213	194	148	128	125	131	139	39	78	33
LOCAL ADMINISTRATIONS	213	194	148	128	125	131	139	39	78	33
MUNICIPALITY OF IZMIT GREATER CITY	213	194	148	128	125	131	139	39	78	33
Payments Undertaken by Treasury /GDP (%)	0.5	0.2	0.1	0.07	0.06	0.05	0.04	0.03	0.02	..

(1) Provisional.

(2) As of May 31, 2011.

OUTSTANDING TREASURY RECEIVABLES (1) (2)

BORROWER (Million TL)	OVERDUE RECEIVABLES	OUTSTANDING RECEIVABLES			TOTAL
		PRINCIPAL	OTHER	TOTAL	
GRAND TOTAL	6,451	16,787	2,307	19,094	25,545
PUBLIC SECTOR	6,451	15,840	2,307	18,147	24,598
GENERAL GOVERNMENT	5,938	8,191	2,277	10,468	16,405
SOCIAL SECURITY INSTITUTIONS	0	10	0	10	10
SOCIAL SECURITY INSTITUTION	0	10	0	10	10
CENTRAL GOVERNMENT	69	1,700	0	1,700	1,769
COMMITTEE OF BANKRUPTCY OF İMAR BANKASI T.A.Ş.	0	1,006	0	1,006	1,006
PRIVATIZATION ADMINISTRATION	0	653	0	653	653
TURKISH STANDARDS INSTITUTION	69	0	0	0	69
TÜBİTAK - MARMARA RESEARCH CENTER	0	6	0	6	6
TÜBİTAK - NATIONAL METROLOGY INSTITUTE	0	8	0	8	8
TURKISH PATENT INSTITUTE	0	3	0	3	3
TURKISH ATOMIC ENERGY AUTHORITY	0	24	0	24	24
LOCAL GOVERNMENTS	5,868	6,481	2,277	8,758	14,626
MUNICIPALITY OF ADANA GREATER CITY	19	469	125	594	613
MUNICIPALITY OF ADAPAZARI GREATER CITY	2	233	118	351	354
MUNICIPALITY OF ALANYA	0	20	13	32	32
MUNICIPALITY OF ANKARA GREATER CITY	2,415	138	1	139	2,554
MUNICIPALITY OF ANTALYA GREATER CITY	0	98	0	98	98
GENERAL DIRECTORATE OF ANTALYA WATER AND SEWERAGE	0	11	0	11	11
ADANA WATER AND SEWERAGE ADMINISTRATION	0	84	0	84	84
ANKARA WATER AND SEWERAGE ADMINISTRATION	300	205	0	205	505
MUNICIPALITY OF BAFRA	0	49	52	102	102
MUNICIPALITY OF BANDIRMA	62	21	0	21	83
MUNICIPALITY OF BATMAN	0	49	0	49	49
MUNICIPALITY OF BURSA GREATER CITY	0	267	0	267	267
MUNICIPALITY OF DALAMAN	0	69	33	102	102
MUNICIPALITY OF DENİZLİ	0	18	0	18	18
MUNICIPALITY OF DIDİM	0	192	57	249	249
DİYARBAKIR WATER AND SEWERAGE ADMINISTRATION	0	100	0	100	100
ELECTRICITY, GAS AND OMNIBUS AUTH. OF ANKARA	1,717	9	3	12	1,729
ERZURUM WATER AND SEWERAGE ADMINISTRATION	0	12	0	12	12
ESKİŞEHİR WATER AND SEWERAGE ADMINISTRATION	0	13	0	13	13
MUNICIPALITY OF FETHİYE	0	31	0	31	31
MUNICIPALITY OF FOÇA	0	12	0	12	12
GAZİANTEP WATER AND SEWERAGE ADMINISTRATION	0	268	261	529	529
MUNICIPALITY OF GAZİANTEP GREATER CITY	0	42	33	75	75
MUNICIPALITY OF İSKENDERUN	0	91	41	132	131,840
İSTANBUL WATER & SEWERAGE ADMINISTRATION	0	62	0	62	62
MUNICIPALITY OF İZMİR GREATER CITY	0	279	25	304	304
MUNICIPALITY OF İZMİR GREATER CITY	58	3,253	1,474	4,727	4,785
MUNICIPALITY OF KAYSERİ GREATER CITY	0	5	0	5	5
KAYSERİ WATER AND SEWERAGE ADMINISTRATION	0	71	0	71	71
MUNICIPALITY OF KONYA GREATER CITY	0	7	0	7	7
KONYA WATER AND SEWERAGE ADMINISTRATION	0	15	0	15	15
MUNICIPALITY OF MALATYA	0	53	0	53	53
UNION OF MARMARİS-İÇMELER-ARMUTALAN MUNICIPALITIES	1,267	0	0	0	1,267
MUNICIPALITY OF MERSİN GREATER CITY	0	1	0	1	1
MUNICIPALITY OF MİLAS	0	21	0	21	22
MUNICIPALITY OF SAMSUN GREATER CITY	0	20	0	20	20
SASKİ - SAMSUN SU VE KANALİZASYON İDARESİ	0	1	0	1	1
MUNICIPALITY OF SİİRT	0	16	0	16	16
MUNICIPALITY OF SİVAS GREATER CITY	0	48	0	48	48
MUNICIPALITY OF ŞANLIURFA	28	10	0	10	38
MUNICIPALITY OF TARSUS	0	86	0	86	86
MUNICIPALITY OF YOZGAT	0	28	39	67	67
MUNICIPALITY OF ZONGULDAK	0	8	0	8	8

(1) Provisional (Includes only Treasury Receivables arised from Law no: 4749).

(2) As of May 31, 2011.

OUTSTANDING TREASURY RECEIVABLES (1) (2)

BORROWER (Million TL)	OVERDUE RECEIVABLES	OUTSTANDING RECEIVABLES			TOTAL
		PRINCIPAL	OTHER	TOTAL	
NON-FINANCIAL INSTITUTIONS	513	7,010	30	7,041	7,554
ORGANIZATIONS	0	20	0	20	20
İSTANBUL OLIMPIC GAMES PREPERATION & ORGANIZING BOARD	0	20	0	20	20
THE UNION OF CHAMBERS AND COMMODITY EXCHANGES OF TURKEY	0	0	0	0	0
SOEs	513	5,780	30	5,810	6,323
PETROLEUM PIPELINE CORP.	0	35	0	35	35
ELECTRICITY GENERATION CO. INC.	0	1,173	30	1,203	1,203
SÜMER HOLDING INC.	0	3	0	3	3
TURKISH STATE RAILWAYS	513	995	0	995	1,508
TURKISH MARITIME ORGANIZATION INC.	0	1	0	1	1
TURKISH ELECTRICITY TRANSMISSION INC.	0	208	0	208	208
GENERAL DIRECTORATE OF AGRICULTURAL ENTERPRISE	0	1	0	1	1
TURKISH GRAIN BOARD	0	3,364	0	3,364	3,364
PUBLIC CORPORATIONS	0	1,211	0	1,211	1,211
EMLAK REAL ESTATE INVESTMENT TRUST	0	1,154	0	1,154	1,154
İSTANBUL GAS DISTRUBITION COMPANY	0	57	0	57	57
FINANCIAL INSTITUTIONS	0	638	0	638	638
INSURANCE CORPORATIONS	0	39	0	39	39
TURKISH CATASTROPHIC INSURANCE POOL	0	39	0	39	39
PUBLIC BANKS	0	600	0	600	600
GENERAL DIRECTORATE OF İLLER BANK	0	1	0	1	1
T. HALK BANK	0	250	0	250	250
T.EXIMBANK	0	187	0	187	187
DEVOLOPMENT BANK OF TURKEY	0	162	0	162	162
PRIVATE SECTOR	0	947	0	947	947
NON-FINANCIAL INSTITUTIONS	0	25	0	25	25
ORGANIZATIONS	0	0	0	0	0
COMPANIES	0	5	0	5	5
CARDIOLOGY FOUNDATION FLORENCE NIGHTINGALE HOSPITAL	0	5	0	5	5
FOUNDATIONS	0	20	0	20	20
TURKISH TECHNOLOGY DEVELOPMENT FOUNDATION	0	20	0	20	20
FINANCIAL INSTITUTIONS	0	922	0	922	922
BANKS	0	922	0	922	922
T. VAKIFLAR BANK T.A.O.	0	221	0	221	221
TURKISH INDUSTRIAL DEVELOPMENT BANK	0	701	0	701	701

(1) Provisional (Includes only Treasury Receivables arised from Law no: 4749).

(2) As of May 31, 2011.

OUTSTANDING OVERDUE RECEIVABLES (1)

BORROWER (Million TL)	2002	2003	2004	2005	2006	2007	2008	2009	2010	Apr 2011
GRAND TOTAL	6,695	17,991	31,394	32,106	42,618	53,315	8,143	9,048	8,289	6,451
PUBLIC SECTOR	6,695	17,988	31,393	32,106	42,618	53,315	8,143	9,048	8,289	6,451
GENERAL GOVERNMENT	6,272	17,275	30,436	31,329	42,463	52,210	6,683	7,320	7,857	5,938
CENTRAL GOVERNMENT	63	71	82	18	19	20	44	57	67	69
UNIVERSITY OF ANADOLU	5	0	0	0	0	0	0	0	0	0
İSTANBUL UNIVERSITY (PRESIDENCY)	16	19	17	18	19	20	0	0	0	0
PRIVATIZATION ADMINISTRATION	42	52	65	0	0	0	0	0	0	0
TURKISH STANDARDS INSTITUTION	0	0	0	0	0	0	44	57	67	69
LOCAL GOVERNMENTS	3,781	6,320	10,204	5,107	5,250	5,978	6,638	7,263	7,790	5,868
MUNICIPALITY OF ADANA GREATER CITY	370	653	822	0	0	0	2	19	52	19
MUNICIPALITY OF ADAPAZARI GREATER CITY	178	247	299	17	37	62	80	92	103	2
MUNICIPALITY OF ALANYA	0	25	30	36	0	0	0	0	0	0
MUNICIPALITY OF ANKARA GREATER CITY	0	92	292	537	822	2,417	2,403	2,389	2,403	2,415
ANKARA WATER AND SEWERAGE ADMINISTRATION	0	60	106	156	205	239	259	280	295	300
MUNICIPALITY OF BAFRA	92	134	158	177	0	0	0	0	0	0
MUNICIPALITY OF BANDIRMA	0	0	0	1	6	16	26	44	58	62
MUNICIPALITY OF DALAMAN	67	113	143	171	12	14	16	18	20	0
MUNICIPALITY OF DIDİM	81	147	219	292	68	87	106	123	135	0
ELECTRICITY, GAS AND OMNIBUS AUTH. OF ANKARA	0	0	815	989	1,146	1,253	1,408	1,563	1,680	1,717
MUNICIPALITY OF FOÇA	0	0	0	2	0	0	0	0	0	0
GAZİANTEP WATER AND SEWERAGE ADMINISTRATION	504	727	871	19	28	17	0	0	0	0
MUNICIPALITY OF GAZİANTEP GREATER CITY	0	99	122	150	173	32	30	12	0	0
MUNICIPALITY OF İSKENDERUN	64	104	138	173	21	26	32	37	38	0
METROPOLITAN MUNICIPALITY OF İSTANBUL	9	0	0	0	0	0	0	0	0	0
MUNICIPALITY OF İZMİR GREATER CITY	0	0	1,119	1,253	1,292	0	0	0	0	0
MUNICIPALITY OF İZMİT GREATER CITY	2,193	3,448	4,376	242	520	825	1,167	1,463	1,694	58
İZMİR WATER AND SEWERAGE AUTHORITY	0	0	0	0	0	3	0	0	0	0
UNION OF MARMARİS-İÇMELER-ARMUTALAN MUNICIPALITIES	150	366	564	743	854	959	1,065	1,167	1,243	1,267
MUNICIPALITY OF MENEMEN	23	35	43	50	57	6	9	12	14	0
MUNICIPALITY OF MİLAS	0	0	0	2	6	12	16	21	25	0
MUNICIPALITY OF SİİRT	0	0	0	0	0	0	0	0	1	0
MUNICIPALITY OF ŞANLIURFA	0	0	0	0	3	10	16	22	27	28
MUNICIPALITY OF YOZGAT	49	71	87	98	1	1	1	1	0	0
FUNDS	2,427	10,884	20,150	26,204	37,194	46,215	0	0	0	0
PUBLIC PARTICIPATION FUND (2)	1,640	1,662	1,675	1,686	1,696	0	0	0	0	0
SDİF-SAVING DEPOSIT INSURANCE FUND	787	9,222	18,475	24,518	35,499	46,215	0	0	0	0
NON-FINANCIAL INSTITUTIONS	423	713	957	778	155	1,104	1,460	1,728	433	513
SOEs	242	447	630	763	137	1,061	1,405	1,728	433	513
ÇUKUROVA ELECTRICITY INC.	0	17	38	0	0	0	0	0	0	0
ELECTRICITY GENERATION CO. INC.	0	0	0	0	0	0	14	0	0	0
TURKISH STATE RAILWAYS	32	380	567	734	106	1,032	1,392	1,728	433	513
TURKISH IRON AND STEEL WORKS	18	23	26	28	30	29	0	0	0	0
TURKISH ELECTRICITY TRANSMISSION INC.	182	0	0	0	0	0	0	0	0	0
TURKISH HARD COAL CORP.	11	27	0	0	0	0	0	0	0	0
PUBLIC CORPORATIONS	181	266	326	15	18	43	55	0	0	0
İZMİT GAS DISTRIBUTION COMPANY	181	266	326	15	18	43	55	0	0	0
PRIVATE SECTOR	0	3	2	0	0	0	0	0	0	0
NON-FINANCIAL INSTITUTIONS	0	3	2	0	0	0	0	0	0	0
FOUNDATIONS	0	3	2	0	0	0	0	0	0	0
BAŞKENT UNIVERSITY	0	3	2	0	0	0	0	0	0	0
Grand Total / GDP (%)	1.9	4.0	5.6	4.9	5.6	6.3	0.9	0.9	0.8	..

(1) Provisional (Includes only Treasury Receivables arised from Law no:4749).

(2) The receivables regarding Public Participation Fund have been waived on the basis of article no:29 of Budget Law for 2007.

COLLECTIONS FROM RECEIVABLES (1)

BORROWER (Million TL)	2002	2003	2004	2005	2006	2007	2008	2009	2010	Jan-May 2011
GRAND TOTAL	2,605.5	1,969.7	1,537.9	6,809.4	2,053.3	3,198.2	4,302.3	1,793.8	2,641.1	681.3
PUBLIC SECTOR	2,413.3	1,747.1	1,343.7	6,591.2	1,922.8	3,077.5	4,166.9	1,649.4	2,477.9	625.6
GENERAL GOVERNMENT	1,460.7	499.7	769.5	4,710.1	1,381.3	2,465.0	2,333.7	677.4	506.2	196.6
SOCIAL SECURITY INSTITUTIONS	0.0	0.4	1.7	1.2	0.0	0.2	0.7	1.4	0.7	0.5
SOCIAL SECURITY INSTITUTION	0.0	0.0	0.0	0.0	0.0	0.2	0.7	1.4	0.7	0.5
SSO-SOCIAL SECURITY ORGANIZATION	0.0	0.4	1.7	1.2	0.0	0.0	0.0	0.0	0.0	0.0
CENTRAL GOVERNMENT	34.0	48.1	335.6	75.1	13.5	15.0	21.6	45.5	52.6	31.8
UNIVERSITY OF ANADOLU	0.0	5.9	0.0	0.0	0.0	0.0	0.0	0.0	0.0	0.0
ENERGY MARKET REGULATORY AUTHORITY	0.1	0.0	0.1	0.1	0.1	0.0	0.0	0.0	0.0	0.0
İSTANBUL UNIVERSITY (PRESIDENCY)	0.0	0.0	3.1	0.0	0.0	0.0	0.0	0.0	0.0	0.0
GENERAL DIRECTORATE OF MINERAL RESEARCH AND EXPLORATION	0.2	0.2	0.2	0.2	0.2	0.1	0.1	0.0	0.0	0.0
PRIVATIZATION ADMINISTRATION	30.6	35.9	325.8	64.3	2.6	9.6	16.7	42.2	49.5	30.3
SÜLEYMAN DEMİREL UNIVERSITY	1.9	4.5	4.6	3.6	4.1	2.6	0.7	0.0	0.0	0.0
TURKISH STANDARDS INSTITUTION	0.0	0.7	1.2	4.2	3.7	0.0	1.6	0.0	0.0	0.0
TÜBİTAK - MARMARA RESEARCH CENTER	0.0	0.0	0.0	0.9	1.0	0.9	0.8	1.1	1.0	0.5
TÜBİTAK - NATIONAL METROLOGY INSTITUTE	0.0	0.0	0.0	1.3	1.4	1.3	1.1	1.5	1.4	0.7
TURKISH PATENT INSTITUTE	0.1	0.0	0.0	0.4	0.5	0.4	0.4	0.5	0.5	0.2
TURKISH ATOMIC ENERGY AUTHORITY	0.0	0.0	0.0	0.0	0.0	0.0	0.3	0.2	0.2	0.0
TURKISH YÜKSEK İHTİSAS EDUCATION AND RESEARCH HOSPITAL	1.2	0.8	0.7	0.0	0.0	0.0	0.0	0.0	0.0	0.0
LOCAL GOVERNMENTS	426.7	451.2	346.7	413.8	498.5	665.5	610.4	630.5	452.8	164.3
MUNICIPALITY OF ADANA GREATER CITY	12.4	14.4	13.9	59.0	56.7	26.9	40.8	38.2	30.1	9.3
MUNICIPALITY OF ADAPAZARI GREATER CITY	3.6	3.7	3.6	2.2	2.7	4.2	5.9	10.2	9.8	1.9
MUNICIPALITY OF ALANYA	0.5	0.3	0.0	0.7	2.3	1.4	1.4	2.9	2.0	0.3
MUNICIPALITY OF ANKARA GREATER CITY	71.0	30.9	0.0	0.0	0.0	111.6	182.6	168.4	95.5	23.0
MUNICIPALITY OF ANTALYA GREATER CITY	20.3	17.7	17.5	16.2	8.6	4.3	5.1	5.3	5.7	2.4
GENERAL DIRECTORATE OF ANTALYA WATER AND SEWERAGE	19.2	23.1	11.9	6.2	6.0	14.0	18.3	14.9	14.1	6.0
ADANA WATER AND SEWERAGE ADMINISTRATION	1.2	1.3	1.5	1.3	1.6	1.4	1.7	6.2	5.6	0.0
ANKARA WATER AND SEWERAGE ADMINISTRATION	30.1	56.1	46.1	35.9	32.2	20.8	21.4	22.2	20.1	0.0
MUNICIPALITY OF BAFRA	0.2	0.2	0.0	0.0	0.0	0.0	0.0	0.0	0.0	0.0
MUNICIPALITY OF BANDIRMA	1.4	2.9	3.6	2.7	3.2	2.5	2.2	2.7	3.1	1.7
MANUCIPALITY OF BATMAN	0.0	0.0	0.1	0.1	0.1	0.2	0.3	0.8	1.2	0.7
MUNICIPALITY OF BURSA GREATER CITY	31.3	54.6	67.1	64.6	64.6	51.5	46.4	34.2	30.9	5.2
BUSKİ - BURSA WATER AND SEWERAGE ADMINISTRATION	0.0	0.0	0.0	0.0	0.0	0.0	0.0	0.0	0.7	0.0
MUNICIPALITY OF DALAMAN	0.1	0.1	0.0	0.0	0.1	0.4	0.4	0.5	0.5	0.1
MUNICIPALITY OF DENİZLİ	0.1	0.1	0.4	0.3	0.3	0.3	0.3	0.8	1.1	0.0
MUNICIPALITY OF DIDİM	0.0	1.0	0.0	0.0	0.0	0.0	0.1	0.1	0.3	0.1
DİYARBAKIR WATER AND SEWERAGE ADMINISTRATION	0.7	2.0	1.9	1.7	2.4	3.2	5.3	6.2	5.6	0.0
ELECTRICITY, GAS AND OMNIBUS AUTH, OF ANKARA	0.1	14.6	34.5	0.0	36.4	63.2	0.0	0.0	0.0	0.0
ERZURUM WATER AND SEWERAGE ADMINISTRATION	0.0	0.2	1.3	0.9	5.2	4.7	5.0	3.0	2.7	0.7
ELECTRICITY, GAS AND OMNIBUS AUTH, OF İZMİR	0.3	3.3	3.2	1.7	0.0	0.0	0.0	0.0	0.0	0.0
ESKİŞEHİR WATER AND SEWERAGE ADMINISTRATION	5.1	5.4	2.1	2.0	2.1	1.8	1.6	1.9	1.3	0.0
MUNICIPALITY OF FETHİYE	0.1	0.3	0.4	0.4	0.5	0.5	0.5	0.6	0.5	0.0
MUNICIPALITY OF FOÇA	0.0	0.0	0.3	0.0	4.3	0.2	0.0	0.0	0.0	0.0
GAZİANTEP WATER AND SEWERAGE ADMINISTRATION	3.5	13.7	16.1	28.9	14.6	16.0	17.2	0.0	0.0	0.0
MUNICIPALITY OF GAZİANTEP GREATER CITY	9.8	25.6	4.7	1.2	10.6	18.0	22.8	31.7	17.4	0.4
MUNICIPALITY OF İSKENDERUN	1.1	0.5	0.1	0.0	0.1	1.0	0.6	0.8	2.0	0.8
İSTANBUL WATER & SEWERAGE ADMINISTRATION	169.6	58.4	15.9	7.2	8.4	7.5	8.6	8.8	7.7	0.8
METROPOLITAN MUNICIPALITY OF İSTANBUL	0.0	9.7	0.0	0.0	0.0	0.0	0.0	0.0	0.0	0.0
MUNICIPALITY OF İZMİR GREATER CITY	19.6	56.2	46.4	76.5	161.6	252.7	149.8	151.4	95.7	90.6
MUNICIPALITY OF İZMİT GREATER CITY	8.8	17.0	14.2	68.0	38.1	29.4	50.1	82.9	71.7	8.7
İZMİR WATER AND SEWERAGE AUTHORITY	6.3	27.1	26.3	20.9	18.8	10.3	0.0	0.0	0.0	0.0
KAYSERİ METROPOLITAN MUNICIPALITY	0.0	0.0	0.0	0.0	0.0	0.0	0.0	2.0	0.3	0.7
KAYSERİ WATER AND SEWERAGE ADMINISTRATION	1.2	1.6	3.8	3.3	3.9	4.9	7.4	7.7	6.9	0.0
MUNICIPALITY OF KONYA GREATER CITY	6.7	5.7	4.2	3.4	2.1	1.0	1.2	1.2	1.1	0.0
KONYA WATER AND SEWERAGE ADMINISTRATION	0.0	0.0	0.0	0.3	1.0	1.8	2.0	8.7	1.3	0.7
MUNICIPALITY OF MALATYA	0.1	0.4	0.7	0.7	0.9	0.8	1.0	1.0	0.9	0.0
UNION OF MARMARİS-İÇMELER-ARMUTALAN MUNICIPALITIES	0.2	0.1	0.0	0.0	0.0	0.3	0.4	1.0	1.1	0.6
MUNICIPALITY OF MENEMEN	0.0	0.0	0.0	0.0	0.0	0.0	0.1	0.1	0.4	0.4
MUNICIPALITY OF MERSİN GREATER CITY	0.1	0.2	0.2	0.2	0.2	0.1	0.1	0.1	0.1	0.0
MUNICIPALITY OF MİLAS	0.0	0.0	0.0	0.3	0.1	0.3	0.7	0.5	0.4	0.4
MUNICIPALITY OF SAMSUN GREATER CITY	0.0	0.1	0.1	0.1	0.2	0.2	0.3	0.3	0.2	0.2
SASKİ - SAMSUN SU VE KANALİZASYON İDARESİ	0.0	0.0	0.0	0.2	0.1	0.1	0.1	0.1	0.1	0.0
MANUCIPALITY OF SİİRT	0.0	0.0	0.0	0.0	0.0	0.1	0.1	1.0	0.7	1.2
MANUCIPALITY OF SİVAS GREATER CITY	0.0	0.0	0.0	0.3	0.1	0.2	0.8	1.6	1.7	0.8
MUNICIPALITY OF ŞANLIURFA	0.0	0.0	2.0	1.9	1.2	0.7	0.9	1.2	3.1	3.0
MUNICIPALITY OF TARSUS	1.9	2.8	2.3	4.5	7.1	6.9	7.0	9.0	8.8	3.5
MUNICIPALITY OF YOZGAT	0.0	0.1	0.0	0.1	0.0	0.2	0.1	0.2	0.5	0.1
MUNICIPALITY OF ZONGULDAK	0.0	0.0	0.0	0.0	0.0	0.0	0.0	0.1	0.1	0.0
FUNDS	1,000.0	0.0	85.6	4,220.1	869.3	1,784.4	1,701.0	0.0	0.0	0.0
SDİF-SAVING DEPOSIT INSURANCE FUND	1,000.0	0.0	85.6	4,220.1	869.3	1,784.4	1,701.0	0.0	0.0	0.0

(1) Provisional (Collections from Treasury Receivables arised from Law no:4749)

CONTINUE →

COLLECTIONS FROM RECEIVABLES (1)

BORROWER (Million TL)	2002	2003	2004	2005	2006	2007	2008	2009	2010	Jan-May 2011
NON-FINANCIAL INSTITUTIONS	871.3	1,036.1	537.1	1,843.8	474.8	533.7	1,754.2	890.3	1,883.8	381.7
ORGANIZATIONS	3.7	14.6	14.7	16.8	24.8	23.2	14.6	20.2	15.9	4.7
İSTANBUL OLIMPIC GAMES PREPERATION & ORGANIZING BOARD	3.5	14.6	14.6	16.7	24.7	23.0	14.4	20.0	15.7	4.6
THE UNION OF CHAMBERS AND COMMODITY EXCHANGES OF TUR.	0.2	0.1	0.1	0.1	0.2	0.2	0.2	0.2	0.2	0.1
SOEs	853.6	1,014.6	515.8	1,822.2	443.8	505.3	1,733.6	645.4	1,683.6	247.0
ASİL STEEL INDUSTRY AND TRADE INC.	0.3	0.3	0.2	0.0	0.0	0.0	0.0	0.0	0.0	0.0
PETROLEUM PIPELINE CORP.	222.3	52.0	58.9	120.0	130.5	113.9	9.2	10.8	9.6	5.1
ÇUKUROVA ELECTRICITY INC.	26.8	16.2	0.0	0.0	0.0	0.0	0.0	0.0	0.0	0.0
SAE-STATE AIRPORT ENTERPRISE	1.7	2.0	2.1	11.1	0.0	0.0	0.0	0.0	0.0	0.0
EBK - MEAT AND FISH PRODUCTS CORP.	0.8	11.5	7.5	3.2	0.0	0.0	0.0	0.0	0.0	0.0
ELECTRICITY GENERATION CO. INC.	116.1	443.1	303.0	243.1	210.9	283.7	394.2	470.0	1,292.5	92.0
SEKA - DIRECTORATE OF KASTOMONU	0.1	0.0	0.0	0.0	0.0	0.0	0.0	0.0	0.0	0.0
SÜMER HOLDING INC.	2.3	2.2	1.9	0.7	1.7	1.5	6.9	27.7	1.6	0.1
T. WOOL AND MOHAIR IND. CORP.	0.1	0.0	0.0	0.0	0.0	0.0	0.0	0.0	0.0	0.0
TURKISH STATE RAILWAYS	0.2	0.2	0.2	3.0	3.3	0.0	1,219 ⁽²⁾	0.0	0.0	0.0
TURKISH IRON AND STEEL WORKS	0.0	0.3	0.3	0.0	0.0	2.9	0.0	0.0	0.0	0.0
TURKISH MARITIME ORGANIZATION INC.	0.3	0.3	0.3	0.2	0.3	0.2	0.3	0.3	0.3	0.0
TURKISH ELECTRICITY DISTRIBUTION INC.	0.0	0.0	0.4	0.7	0.8	0.7	0.7	0.8	0.7	0.4
TURKISH ELECTRICITY TRANSMISSION INC.	0.0	420.8	81.5	25.8	24.6	22.1	23.1	44.0	44.1	4.7
TURKISH ELECTRICITY TRADE AND COMMITMENT INC.	0.0	0.0	0.2	0.3	0.3	0.3	0.3	0.3	0.3	0.2
GENERAL DIRECTORATE OF AGRICULTURAL ENTERPRISE	1.4	0.2	0.2	0.2	0.2	0.2	0.2	0.2	0.2	0.0
GENERAL DIRECTORATE OF TURKISH COAL	4.7	4.6	2.4	0.1	0.1	0.1	0.0	0.0	0.0	0.0
TURKISH GRAIN BOARD	439.5	21.4	9.8	865.9	55.9	79.7	80.0	91.3	334.3	144.5
TURKISH HARD COAL CORP.	0.0	0.0	10.5	19.1	15.4	0.0	0.0	0.0	0.0	0.0
TÜGSAŞ - T. FERTILIZER IND.	10.5	1.6	1.7	0.7	0.0	0.0	0.0	0.0	0.0	0.0
T.SHIPPING INDUSTRY CORP.	2.2	0.0	0.0	0.0	0.0	0.0	0.0	0.0	0.0	0.0
T. SUGAR PRODUCTION INC	24.3	37.8	34.8	528.0	0.0	0.0	0.0	0.0	0.0	0.0
TZDK - TURKISH AGRICULTURAL EQUIPMENT INSTITUTION	0.0	0.0	0.0	0.0	0.0	0.0	0.0	0.0	0.0	0.0
PUBLIC CORPORATIONS	14.0	6.9	6.6	4.9	6.2	5.2	6.0	224.7	184.2	130.0
EMLAK REAL ESTATE INVESTMENT TRUST	0.0	0.0	0.0	0.0	0.0	0.0	0.0	155.3	178.6	130.0
İSTANBUL GAS DISTRIBUTION COMPANY	14.0	6.7	6.6	4.9	5.9	5.2	6.0	6.2	5.7	0.0
İZMİT GAS DISTRIBUTION COMPANY	0.0	0.2	0.0	0.0	0.4	0.0	0.0	63.2	0.0	0.0
FINANCIAL INSTITUTIONS	81.3	211.3	37.0	37.3	66.7	78.7	78.9	81.7	87.9	47.3
INSURANCE CORPORATIONS	1.5	5.3	4.7	4.9	12.4	12.4	12.6	15.8	21.3	10.9
TURKISH CATASTROPHIC INSURANCE POOL	1.5	5.3	4.7	4.9	12.4	12.4	12.6	15.8	21.3	10.9
PUBLIC BANKS	79.8	205.9	32.4	32.3	54.3	66.3	66.2	65.9	66.5	36.4
GENERAL DIRECTORATE OF İLLER BANK	14.1	40.9	8.4	3.9	3.7	2.9	3.1	3.1	3.0	1.5
T. EMLAK BANK	16.8	0.0	0.0	0.0	0.0	0.0	0.0	0.0	0.0	0.0
T. HALK BANK	13.6	16.0	16.9	15.8	17.6	20.4	22.1	24.3	26.1	11.5
TEXİMBANK	7.5	5.3	4.1	8.2	26.6	34.9	32.1	33.1	25.7	13.3
DEVELOPMENT BANK OF TURKEY	24.1	12.1	0.4	1.3	2.7	4.0	5.6	5.3	11.8	10.1
T.C. ZİRAAT BANK	3.7	131.7	2.5	3.2	3.7	4.2	3.3	0.0	0.0	0.0
PRIVATE SECTOR	192.2	222.6	194.2	218.2	130.5	120.7	135.4	144.4	163.2	55.7
FOUNDATIONS	8.5	5.3	11.3	52.2	3.4	3.1	2.7	3.5	3.4	1.8
BAŞKENT UNIVERSITY	8.3	5.2	11.3	49.0	0.0	0.0	0.0	0.0	0.0	0.0
BİLKENT UNIVERSITY	0.1	0.0	0.0	0.0	0.0	0.0	0.0	0.0	0.0	0.0
KOÇ UNIVERSITY	0.1	0.0	0.0	0.0	0.0	0.0	0.0	0.0	0.0	0.0
TURKISH TECHNOLOGY DEVELOPMENT FOUNDATION	0.0	0.0	0.0	3.1	3.4	3.1	2.7	3.5	3.4	1.8
COMPANIES	82.6	81.9	73.9	55.2	24.3	7.8	9.0	9.4	2.8	0.0
EREĞLİ IRON & STEEL WORKS CO.	71.4	70.8	68.2	54.6	23.6	7.1	8.2	8.6	2.1	0.0
CARDIOLOGY FOUNDATION FLORENCE NIGHTINGALE HOSPITAL	0.7	0.7	0.7	0.6	0.7	0.7	0.8	0.8	0.7	0.0
TELEKOM - TURKISH TELECOM	0.0	0.0	0.0	0.0	0.0	0.0	0.0	0.0	0.0	0.0
THY - TURKISH AIRLINES	0.6	0.8	0.0	0.0	0.0	0.0	0.0	0.0	0.0	0.0
TÜPRAŞ - T. PETROLIUM RAFINERIES	9.9	9.7	4.9	0.0	0.0	0.0	0.0	0.0	0.0	0.0
ORGANIZATIONS	0.3	1.1	0.8	0.7	0.7	0.8	0.4	0.6	0.5	0.5
BALIKESİR INDUSTRIAL ZONE	0.1	0.9	0.7	0.6	0.6	0.7	0.4	0.5	0.4	0.4
BURSA MUSTAFAKEMALPAŞA ORGANIZED INDUSTRIAL ZONE	0.1	0.2	0.0	0.0	0.0	0.0	0.0	0.0	0.0	0.0
KÜTAHYA INDUSTRIAL ZONE	0.0	0.0	0.0	0.1	0.1	0.1	0.1	0.1	0.1	0.0
BANKS	100.9	134.3	108.4	110.1	102.1	109.0	123.3	130.9	156.6	53.5
SYB - INDUSTRIAL INVESTMENT BANK	29.4	0.0	0.0	0.0	0.0	0.0	0.0	0.0	0.0	0.0
T. GARANTİ BANK	3.8	3.5	3.2	2.9	1.4	0.0	0.0	0.0	0.0	0.0
T. VAKIFLAR BANK T.A.O.	20.3	19.8	15.0	14.4	14.1	20.9	24.0	22.6	39.1	23.2
TOPRAKBANK A.Ş.	2.3	2.1	1.8	1.7	0.8	0.0	0.0	0.0	0.0	0.0
TURKISH INDUSTRIAL DEVELOPMENT BANK	38.6	102.9	83.4	86.6	83.7	88.1	99.3	108.2	117.4	30.3
YAPI VE KREDİ BANK CORP.	6.6	6.0	5.0	4.6	2.2	0.0	0.0	0.0	0.0	0.0
Grand Total / GSİYH (%)	0.7	0.4	0.3	1.0	0.3	0.4	0.3	0.2	0.2	..

(1) Provisional (Collections from Treasury Receivables arised from Law no:4749).

(2) Transaction Due to The Provisional Article 16 of Law No. 4749

OTHER TREASURY CLAIMS STOCK ^{(1) (2)}

Thousand TL	2010			2011 Q2		
	Outstanding Overdue Claims	Projected Claims Stock	Total	Outstanding Overdue Claims	Projected Claims Stock	Total
Municipalities	0	141,877	141,877	0	101,692	101,692
Credits from the Decree of the Council of Ministers (No.2001/2312)	0	23,116	23,116	0	23,102	23,102
Public Banks	62	2,756,835	2,756,897	61	2,752,834	2,752,894
Onlending Agreements	0	505	505	0	498	498
Incentive Credits	0	113,387	113,387	0	113,387	113,387
Foundations	0	12,923	12,923	0	12,923	12,923
Funds	0	0	0	0	1,073,087	1,073,087
Other	539,251	104,800	644,051	538,153	71,301	609,455
TOTAL	539,313	3,153,443	3,692,756	538,214	4,148,824	4,687,038

(1) Provisional. Including the stock data of overdue and projected claims.

(2) Other Treasury claims are those claims which are out of the scope or Article 3 of the Law No. 4749, where the Treasury is a party representing the legal entity of the State.

COLLECTIONS FROM OTHER TREASURY CLAIMS ^{(1) (2)}

	2010		2011 Q2	
	Thousand TL	(%)	Thousand TL	(%)
Municipalities	89,685	36	0	0
Credits from the Decree of the Council of Ministers (No.2001/2312)	3,184	1	0	0
Public Banks	87,847	35	0	0
Onlending Agreements	142	0	0	0
Incentive Credits	35,571	14	0	0
Foundations	0	0	0	0
Funds	0	0	0	0
Other	35,804	14	43,052	100
TOTAL	252,233	100	43,052	100

(1) Provisional.

(2) The collected amounts comprise the transactions of foreing exchange gains or losses and stock revisions which are done yearly.

71th issue of Public Debt Management Report will be published on 30th June, 2011 at 17:30.



This report has been drawn up in accordance with Article 14 of Law No. 4749 on the Regulation of Public Financing and Debt Management. This issue of the Report contains the data and information regarding the period of April 2011. Information contained in this report can be used provided that the source is cited.

For further information:
(0312) 204 61 73
(0312) 204 61 28

www.treasury.gov.tr
e-mail: kbyr@treasury.gov.tr

PRINTED AT
THE UNDERSECRETARIAT OF TREASURY