



REPUBLIC OF TURKEY
PRIME MINISTRY

Undersecretariat of Treasury

PUBLIC DEBT MANAGEMENT REPORT

2011 Financing Program	1
Budget Realizations	2
Treasury Cash Balance	4
Domestic Debt	5
External Debt	9
Debt Stock	13
Treasury Guaranteed External Debt	19
Treasury Receivables	23
Developments in the Credit Rating of Turkey	26
Calendar	27
Public Finance Statistics.....	28
ANNEX	29

No: 67

FEBRUARY 2011

**REPUCLIC OF TURKEY
PRIME MINISTRY**

UNDERSECRETARIAT OF TREASURY



**PUBLIC DEBT MANAGEMENT
REPORT**

FEBRUARY 2011



2011 FINANCING PROGRAM

PROGRAM AND REALIZATIONS ⁽¹⁾

(Billion TL)	Program	Realization
	January - December	January
I-TOTAL DEBT SERVICE	152.8	31.2
Domestic Debt Service	135.0	28.7
Principal	99.3	25.1
Interest	35.8	3.6
External Debt Service	17.8	2.5
Principal	11.0	1.7
Interest	6.8	0.8
II-FINANCING	152.8	31.2
Total Borrowing	131.7	27.0
External Borrowing	12.5	1.6
Domestic Borrowing	119.1	25.4
Other Financing (2)	21.1	4.2
Total Domestic Roll-Over Ratio	88%	88.6%
Memo (Billion TL)		
Net Borrowing	21.4	0.2
Net Domestic Borrowing	19.9	0.3
Net External Borrowing	1.6	-0.1

(1) Cash based.

(2) The cash primary balance, privatization revenues, receipts from on lending and guaranteed debt, receipts from SDIF, use of cash account and FX changes are shown under other financing item.

STRATEGIC BENCHMARKS

- ✓ Making domestic cash borrowing mainly in TL
- ✓ To use fixed rate TL instruments as the major source of domestic cash borrowing and decrease the share of debt which has interest rate refixing period less than 12 months
- ✓ To increase the average maturity of domestic cash borrowing taking market conditions into consideration and decrease the share of debt maturing within 12 months
- ✓ To keep a certain level of cash reserve in order to reduce the liquidity risk associated with cash and debt management

BUDGET REALIZATION

CENTRAL GOVERNMENT BUDGET REALIZATION AND FINANCING

(Million TL)	2010	2011	
	January	January	Total
Central Government Revenues	19,525	23,499	23,499
Tax Revenues	17,304	19,765	19,765
-Direct Taxes	5,301	5,946	5,946
-Indirect Taxes	12,004	13,819	13,819
Nontax Revenues	2,221	3,734	3,734
Central Government Expenditures	22,646	22,494	22,494
Personnel Expenditure	6,321	7,249	7,249
Social Security Contributions	1,038	1,316	1,316
Purchase of Goods and Services	735	901	901
Interest Payments	6,090	3,803	3,803
Current Transfers	7,950	8,928	8,928
Capital Expenditure	35	72	72
Capital Transfers	38	76	76
Lending	440	147	147
Contingencies	0	0	0
Central Government Primary Balance	2,968	4,809	4,809
Central Government Balance	-3,121	1,005	1,005
Deferred Payments	2,145	-2,509	-2,509
Other Deferred Payments	-1,148	2,684	2,684
Advances	3,660	4,039	4,039
Central Government Cash Balance	1,536	5,219	5,219
Central Government Budget Financing	-1,536	-5,219	-5,219
Borrowing (Net)	9,365	175	175
Foreign Borrowing (Net)	3,097	-137	-137
-Receipts	3,160	1,628	1,628
-Payments	-63	-1,765	-1,765
Domestic Borrowing (Net)	6,268	312	312
-TL Denominated T-Bills	1,473	-1,735	-1,735
Receipts	2,919	0	0
Payments	-1,446	-1,735	-1,735
-TL Denominated G-Bonds	6,873	2,047	2,047
Receipts	15,826	25,419	25,419
Payments	-8,953	-23,372	-23,372
-FX Denominated G-Bonds	-2,077	0	0
Receipts	2,807	0	0
Payments	-4,884	0	0
Net Lending (-)	33	100	100
Lending	80	100	100
Repayment (-)	47	0	0
Privatization Revenue	0	0	0
SDIF Revenue Surplus	0	1	1
Currency/Deposit And Other Transactions	-10,868	-5,295	-5,295

GENERAL BUDGET FINANCING

(Million TL)	2009	2010	
	January	January	Total
General Budget Balance	-2,835	1,167	1,167
Deferred Payments	829	-2,553	-2,553
Other Deferred Payments	-945	3,180	3,180
Advances	3,518	3,808	3,808
General Budget Cash Balance	567	5,601	5,601
General Budget Financing	-567	-5,601	-5,601
Borrowing (Net)	9,365	175	175
Foreign Borrowing (Net)	3,097	-137	-137
-Receipts	3,160	1,628	1,628
-Payments	-63	-1,765	-1,765
Domestic Borrowing (Net)	6,268	312	312
-TL Denominated T-Bills	1,473	-1,735	-1,735
Receipts	2,919	0	0
Payments	-1,446	-1,735	-1,735
-TL Denominated G-Bonds	6,873	2,047	2,047
Receipts	15,826	25,419	25,419
Payments	-8,953	-23,372	-23,372
-FX Denominated G-Bonds	-2,077	0	0
Receipts	2,807	0	0
Payments	-4,884	0	0
Net Lending (-)	32	100	100
Lending	80	100	100
Repayment (-)	48	0	0
SDIF Revenue Surplus	0	0	0
Privatization Revenue	0	1	1
Currency/Deposit And Other Transactions	-9,901	-5,677	-5,677

PROGRAM DEFINED CENTRAL GOVERNMENT BUDGET PRIMARY BALANCE⁽¹⁾

(Million TL)	2009	2010	
	January	January	Total
1. Central Government Budget Revenues (Public Accounts Bulletin)	19,525	23,499	23,499
a. Privatization Proceeds (-)	0	588	588
b. Interest Receipts (-)	151	776	776
c. CBT Profit & Revaluation (-)	0	0	0
d. Dividend Payments of State Banks (-)	0	0	0
e. Special Revenues of the Turkish Mint (-)	20	14	14
f. Net Lending to CGS (-)	-11	0	0
g. Sales of Immovables (-)	0	0	0
h. Unemployment Insurance Fund Transfer (GAP) (-)	66	97	97
2. Central Government Budget Revenues (Program Definition) (1-a-b-c-d-e-f-g-h)	19,300	22,023	22,023
3. Central Government Primary Expenditures (Public Accounts Bulletin)	16,557	18,691	18,691
i. Risk Account (-)	0	0	0
j. Social Security Transfers (Cash - Accrual Difference) (+)	205	-515	-515
k. Net Lending to CGS (+)	0	0	0
4. Central Government Primary Expenditure (Program Definition) (3-i+j+k)	16,762	18,176	18,176
Primary Balance (Public Accounts Bulletin) (1-3)	2,968	4,809	4,809
Primary Balance (Program Definition) (2-4)	2,538	3,847	3,847

(1) Provisional

TREASURY CASH BALANCE

CASH BALANCE REALIZATIONS ⁽¹⁾

(Million TL)	2009	2010	
	January-December	January	Total
1. REVENUES	240,402	21,879	21,879
2. EXPENDITURES	282,078	22,633	22,633
Non-Interest Expenditures	234,187	18,231	18,231
Interest Payments	47,891	4,403	4,403
3. PRIMARY BALANCE	6,215	3,649	3,649
4. PRIVATIZATION AND FUNDS INCOME ⁽²⁾	6,742	1,147	1,147
5. CASH BALANCE (1+4-2)	-34,934	393	393
6. FINANCING (7+8+9+10+11)	34,934	-393	-393
7. BORROWING (NET)	26,946	182	182
FOREIGN BORROWING (NET)	4,164	-131	-131
Borrowing	14,861	1,596	1,596
Payment	10,697	1,727	1,727
DOMESTIC BORROWING (NET)	22,782	312	312
Borrowing	159,024	25,419	25,419
Payment	136,242	25,107	25,107
8. PRIVATIZATION ⁽³⁾	0	0	0
9. TRANSFERS FROM SDIF	658	1	1
10. RECEIPTS FROM ONLENDING	1,371	62	62
11. CHANGE IN BANK ACCOUNTS ⁽⁴⁾ (5+7+8+9+10)	5,959	-637	-637
12. EFFECT OF CHANGE IN EXCHANGE RATE ⁽⁵⁾	-396	225	225
13. NET CHANGE IN BANK ACCOUNTS ⁽⁴⁾ (11-12)	6,355	-862	-862

(1) Provisional

(2) This amount indicates the transfers made by Turkish Privatization Administration (PA) that will be recorded as budget revenue in the Public Accounts Bulletin. Additionally, the amounts transferred from PA and Unemployment Fund for South Eastern Anatolia Project that will be recorded as budget revenue in the Public Accounts Bulletin are shown here.

(3) This row indicates the amount transferred from Turkish Privatization Administration for budget financing.

(4) A decrease / increase in bank accounts is denoted by + / - sign.

(5) This row indicates the change in the value of the items held in foreign exchange as a result of the exchange rate movements.

DOMESTIC DEBT

SECURITIES ISSUED (January 2011)

Zero Coupon TL Denominated Securities (Million TL)

Auction Date	Maturity Date	Annual Yield (Compound) (%)	Amount Issued	
			Nominal	Net
12.01.2011	07.11.2012	6.98	7,778	6,877
19.01.2011	14.03.2012	7.39	2,374	2,186
		Total	10,152	9,063

(1) İhale sonrası değişimler hariç.

Fixed Couponed TL Denominated Securities (Million TL)

Auction Date	Maturity Date	Coupon Rate (%)	Yield		Amount Issued	
			Semi-Annual	Annual Compound (%)	Nominal	Net
12.01.2011	15.01.2020 ⁽²⁾	5.25	4.28	8.75	2,937	3,431
19.01.2011	09.10.2013 ⁽¹⁾	2.00	1.98	8.16	5,334	5,353
				Total	8,271	8,784

(1) Coupons of the security are paid quarterly.

(2) Coupons of the security are paid semi-annually.

TL Denominated Floating Rate Notes (Million TL)

Auction Date	Maturity Date	Term Interest Determined By Treasury (%)	Term Interest Accepted In Auction (%)	Amount Issued	
				Nominal	Net
12.01.2011	25.07.2017 ⁽²⁾	4.00	3.77	4,755	4,942
			Total	4,755	4,942

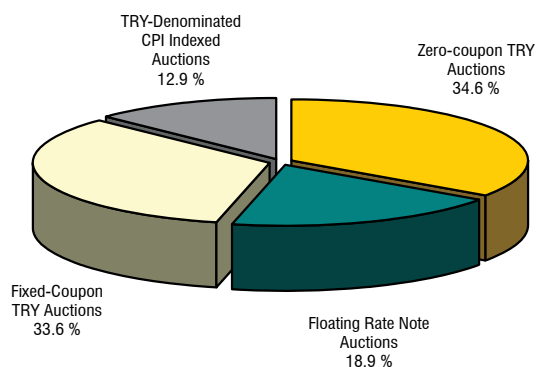
(1) Coupons of the security are paid quarterly.

(2) Coupons of the security are paid semi-annually.

TL Denominated CPI Indexed Bonds (Million TL)

Auction Date	Maturity Date	Coupon Rate ⁽¹⁾ (%)	Yield (%)	Amount Issued	
				Nominal	Net
19.01.2011	06.01.2021	1.50	1.42	3,329	3,376
			Total	3,329	3,376

BREAKDOWN OF DOMESTIC BORROWING BY INSTRUMENTS ⁽¹⁾ (January 2011)

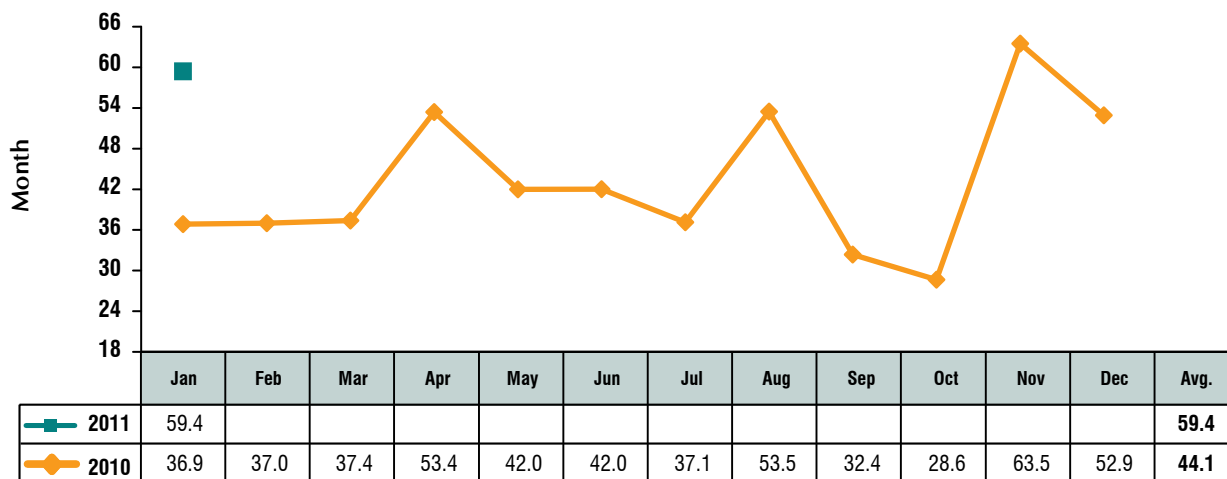


(1) Excluding switching auctions.

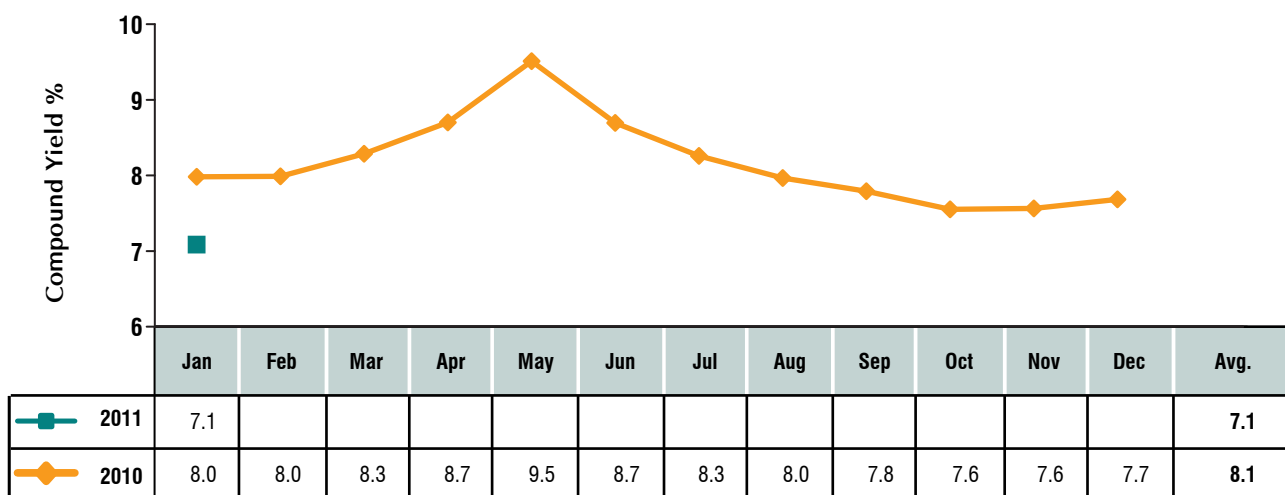
CURRENCY AND INTEREST RATE COMPOSITION OF DOMESTIC BORROWING

(%)	2010 January	2011 January
Total Borrowing	100	100
Fixed Rate	85.9	68.2
Floating Rate	14.1	31.8
Total Borrowing	100	100
TL Denominated	86.0	100
Fixed Rate	71.9	68.2
Floating Rate	14.1	31.8
FX Denominated	14.0	0
Fixed Rate	14.0	0
Floating Rate	0	0

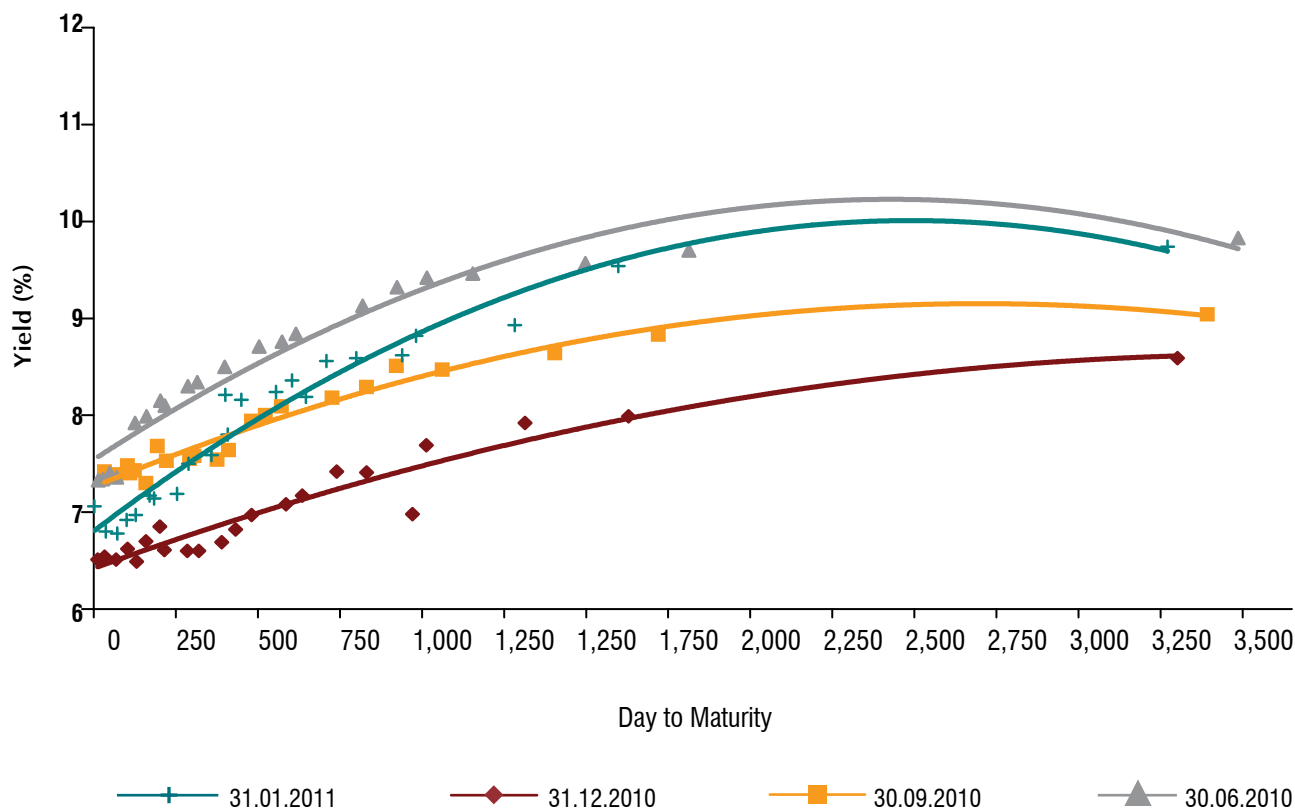
WEIGHTED AVERAGE MATURITY OF DOMESTIC BORROWING



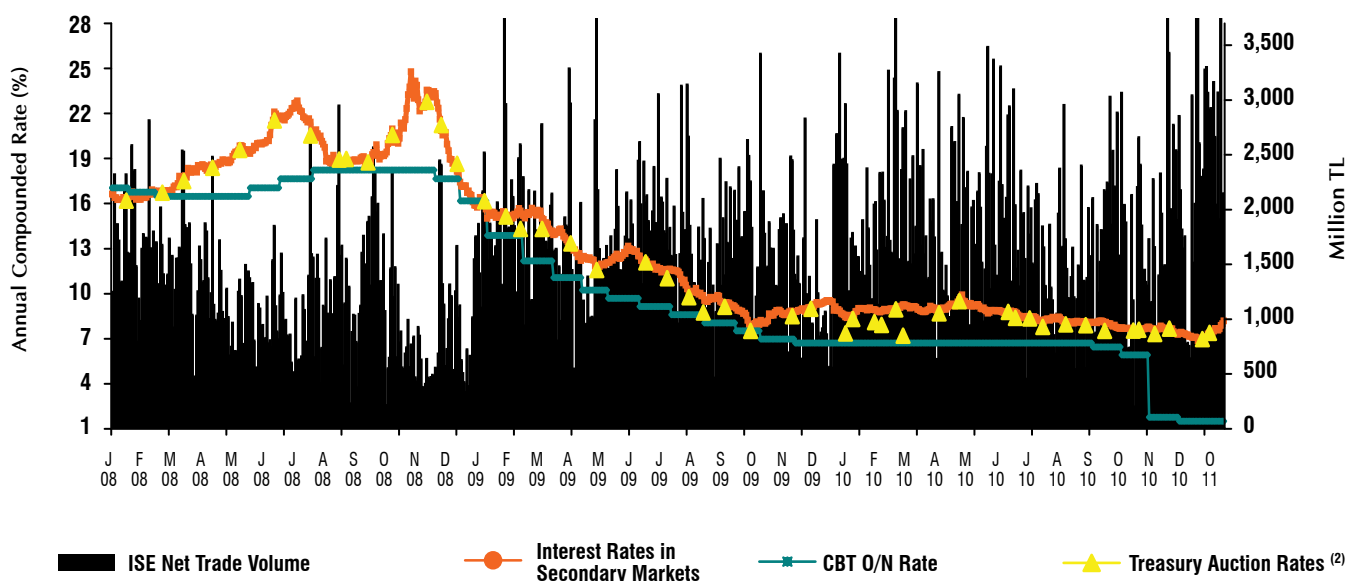
WEIGHTED AVERAGE COST OF ZERO - COUPON TL - DENOMINATED DOMESTIC BORROWING



TL YIELD CURVE

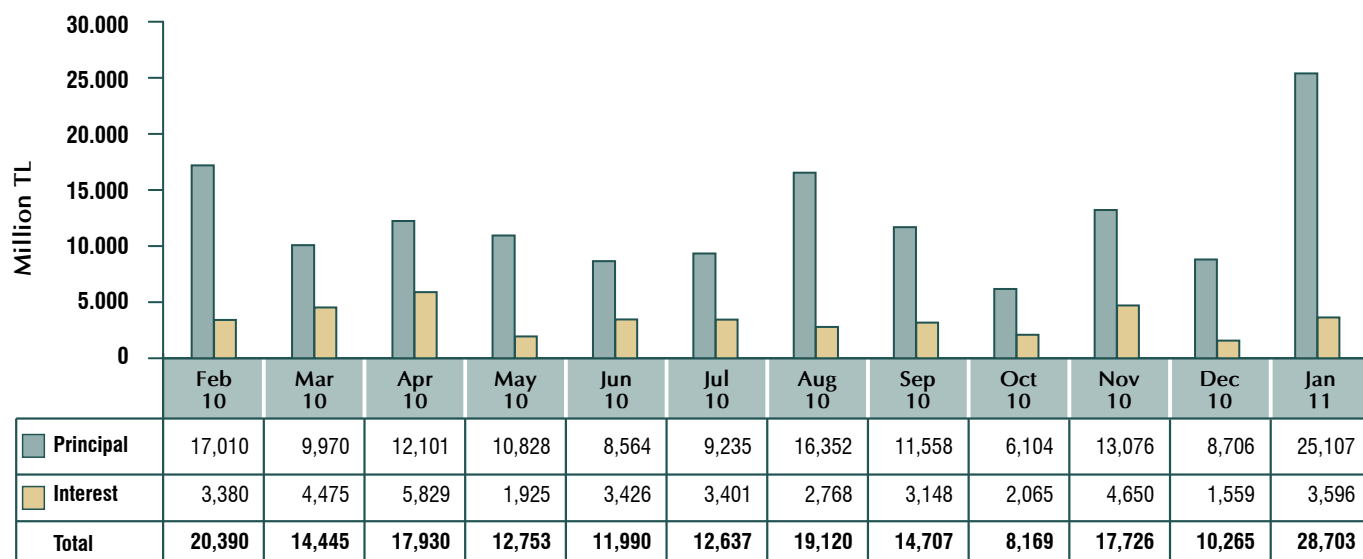


YIELDS AND TRADING VOLUMES OF GOVERNMENT DOMESTIC SECURITIES ⁽¹⁾



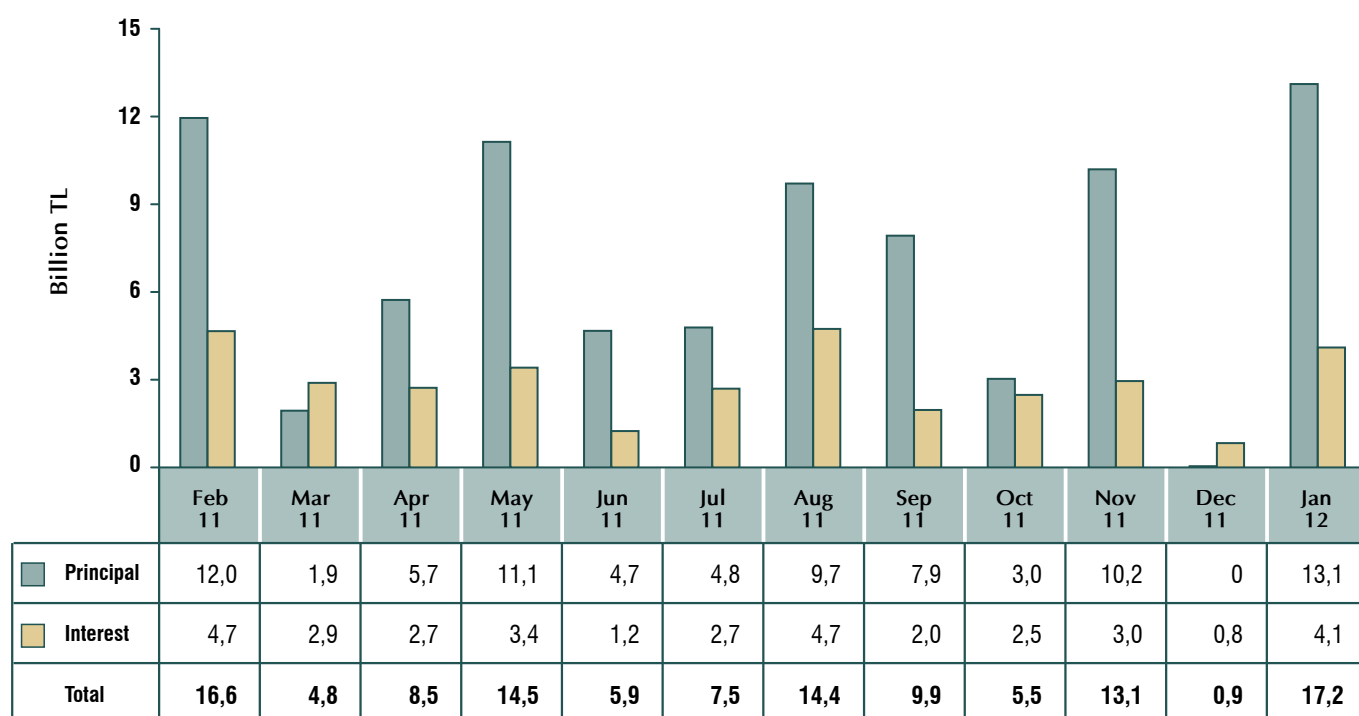
(1) Include daily data for issue bonds and bills outright purchases and sales market and interest rates determined in Treasury auctions.
 (2) Include discounted TL denominated security auctions that exclude 3 month reference t-bill issues.

CENTRAL GOVERNMENT DOMESTIC DEBT SERVICE (1)



(1) Payments on non-cash bases are included.

CENTRAL GOVERNMENT DOMESTIC DEBT PAYMENT PROJECTIONS (1)



(1) Payment projections on outstanding domestic debt stock as of February 18, 2011.

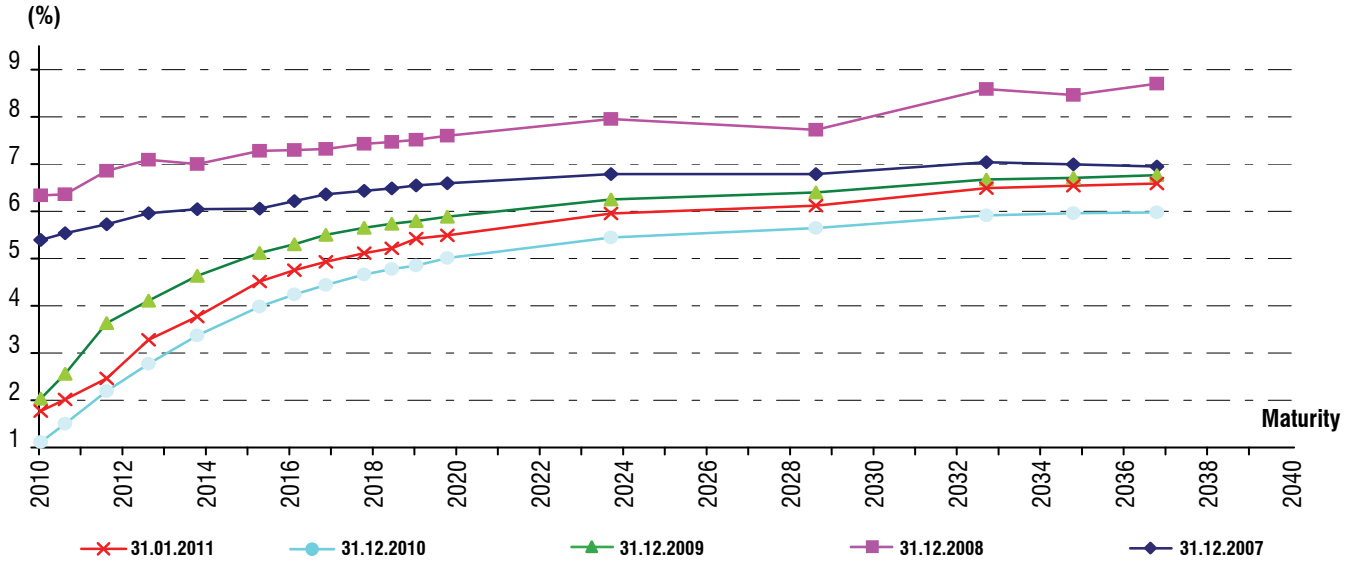
EXTERNAL DEBT

EUROBOND ISSUANCE IN 2011

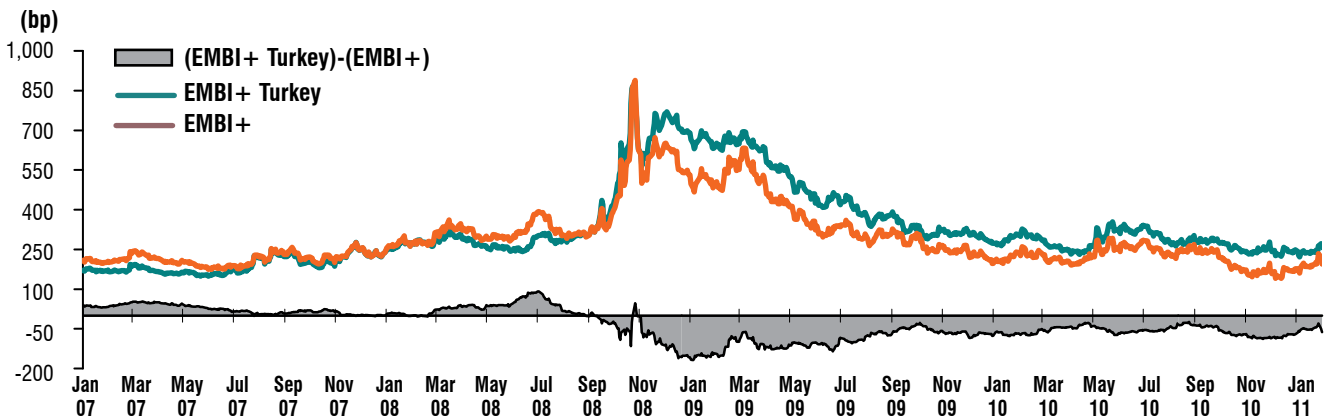
Issue Type	Issue Date	Maturity	Currency	Amount (million)	Amount (million USD)	Coupon (%)	Issue Price	Yatırımcıya Getiri (%)	Yatırımcıya Getiri (Spread) Bp
Global \$	12.01.2011	14.01.2041	USD	1,000	1,000	6.00	96.631	6.250	UST + 169.7 bp
Total (Million US Dollar)					1,000				

UST : United States Treasury Bond Yield
 bp : Basis point (100 bp = %1.00)

YIELD CURVE OF USD DENOMINATED EUROBONDS



PERFORMANCE OF TURKEY'S BONDS IN EMERGING MARKET BOND INDEX (EMBI+)⁽¹⁾



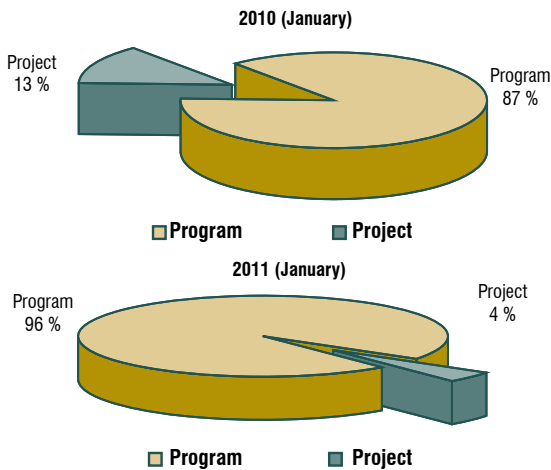
(1) EMBI+ is an index which displays the difference between the weighted yield of selected emerging sovereign bonds and the US Treasury bonds. The performance of the Turkish bonds in the index can be tracked under EMBI+ Turkey.

LOAN AGREEMENTS OF CENTRAL GOVERNMENT BUDGET

Credit name	Program Credit / Project Credit Distinction	Lender (1)	Borrower	Implementing Agency	Agreement Date (2)	Agreement Currency	Agreement Amount	USD Denominated Amount
Bond Issuance	Program	Barclays Capital, Deutsche Bank, JP Morgan	Republic of Turkey	Undersecretariat of Treasury	12-Jan-2011	USD	1,000,000,000	1,000,000,000
Total								1,000,000,000

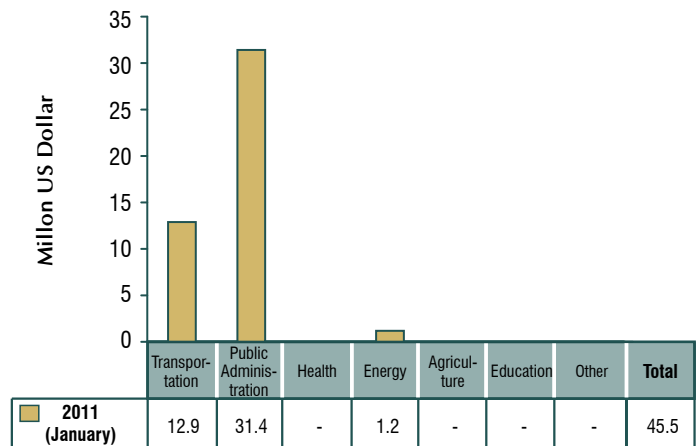
- (1) Lender managers are used for bond issuances.
 (2) Issue Date is used instead of agreement date for bond issuances.

EXTERNAL CREDIT DISBURSEMENTS OF CENTRAL GOVERNMENT (1) (2) (3)



- (1) Including eurobond issuance.
 (2) TL equivalent is calculated by the end of relevant period's US \$ buying rates.
 (3) Contains SDR allocation.

PROJECT CREDIT DISBURSEMENTS OF CENTRAL GOVERNMENT (1)



- (1) Calculated by the end of relevant period's US \$ buying rates.

NET FINANCING FROM THE INTERNATIONAL MONETARY FUND (1)

(Million SDR)	2000	2001	2002	2003	2004	2005	2006	2007	2008	2009	2010	2011 January	Total
I. Disbursement	2,622	8,895	9,929	1,191	794	1,666	1,999	749	2,248	0	0	0	30,093
II. Debt Service	105	1,207	5,544	1,863	3,805	5,910	5,635	3,741	1,502	582	1,508	0	31,403
Principal	66	868	4,916	1,224	3,158	5,267	5,092	3,373	1,244	458	1,423	0	27,088
Interest	40	339	628	639	647	644	543	368	258	124	85	0	4,315
III. Net Financing (I-II)	2,517	7,688	4,385	-672	-3,011	-4,245	-3,637	-2,992	746	-582	-1,508	0	-1,310
IV. Net Financing Excluding Interest	2,556	8,028	5,013	-33	-2,364	-3,601	-3,094	-2,624	1,004	-458	-1,423	0	3,005
V. IMF Debt Stock (end of period)	3,205	11,233	16,246	16,213	13,848	10,247	7,154	4,530	5,534	5,076	3,654	3,654	..

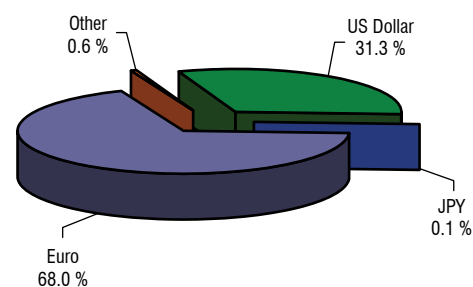
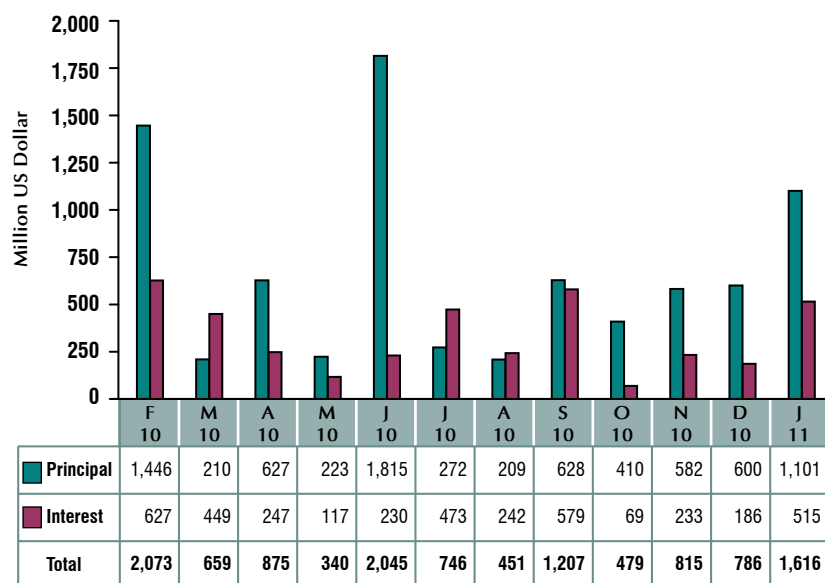
Million US Dollar (2)	2000	2001	2002	2003	2004	2005	2006	2007	2008	2009	2010	2011 January	Total
I. Disbursement	3,415	11,179	13,499	1,770	1,233	2,380	3,007	1,184	3,463	0	0	0	47,004
II. Debt Service	137	1,517	7,537	2,768	5,909	8,447	8,478	5,912	2,314	913	2,322	0	49,050
Principal	85	1,090	6,684	1,819	4,905	7,527	7,661	5,331	1,916	718	2,191	0	42,310
Interest	52	426	853	949	1,005	920	817	581	398	195	131	0	6,739
III. Net Financing (I-II)	3,278	9,662	5,962	-998	-4,677	-6,067	-5,471	-4,727	1,149	-913	-2,322	0	-2,046
IV. Net Financing Excluding Interest	3,329	10,088	6,815	-49	-3,672	-5,147	-4,654	-4,146	1,547	-718	-2,191	0	4,693
V. IMF Debt Stock (end of period)	4,174	14,117	22,086	24,092	21,507	14,646	10,762	7,158	8,524	7,958	5,627	5,707	..

(1) The Undersecretariat of Treasury and the Central Bank combined. The Central Bank made its last disbursement in 2001 and completed its repayment obligations in 2005.

(2) End-January 2011 \$/SDR exchange rate is used for the total column. End-period \$/SDR rates are used for the rest. All \$/SDR rates are taken from the IMF web site (www.imf.org).

CENTRAL GOVERNMENT EXTERNAL DEBT SERVICE (1) (2)

CURRENCY COMPOSITION OF EXTERNAL DEBT SERVICE (1) (January 2011)

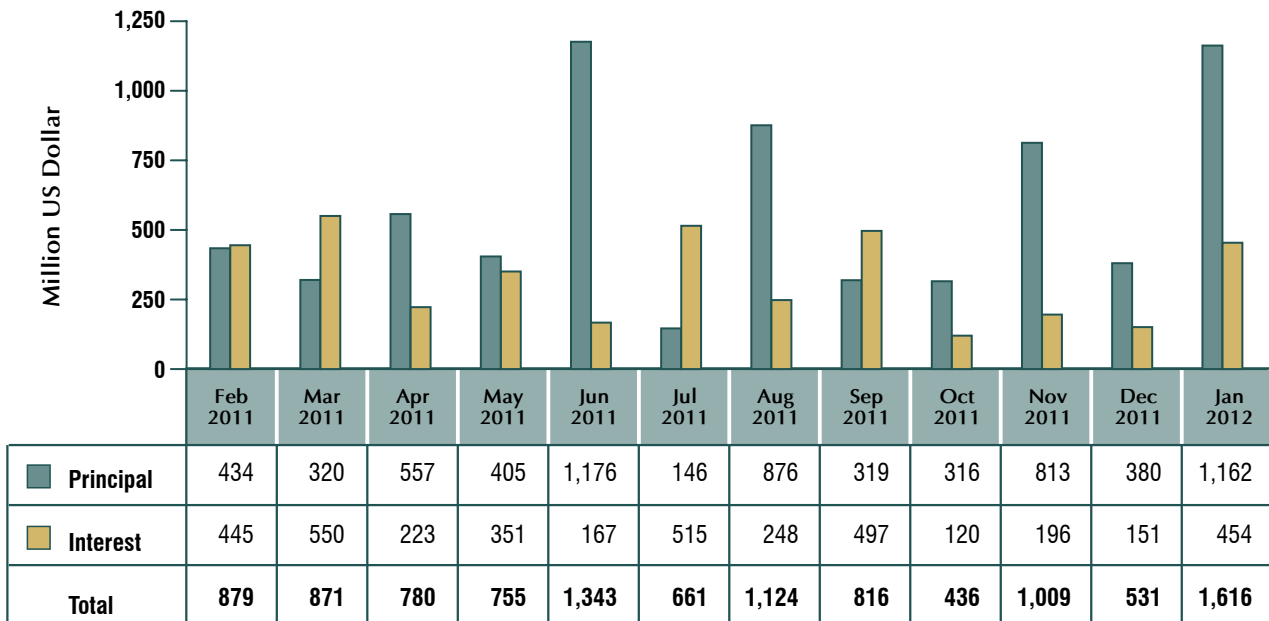


(1) Exchange rates of cash outflow dates were taken.

(1) Exchange rates of cash outflow dates were taken.

(2) Does not include discount payments, commissions and fees.

CENTRAL GOVERNMENT EXTERNAL DEBT PAYMENT PROJECTIONS (1) (2) (3) (4)



(1) Projections as of February 21, 2011.

(2) Projections are based on current debt stock and do not include potential agreements and drawings.

(3) No payment is foreseen by non-general budget institutions

(4) Does not include commissions and fees.

CENTRAL GOVERNMENT EXTERNAL DEBT PAYMENT PROJECTIONS (1) (2) (3)



(1) Projections are based on the US parities dated January 31, 2011.

(2) Projection figures are based on total debt stock amount and do not include possible realizations.

(3) Disbursement expenditures are not included.

DEBT STOCK

CURRENCY AND INTEREST COMPOSITION OF CENTRAL GOVERNMENT DEBT STOCK ⁽¹⁾

CENTRAL GOVERNMENT	(Million TL)				(Million US Dollar)				(%)			
	2008	2009	2010	2011 Jan	2008	2009	2010	2011 Jan	2008	2009	2010	2011 Jan
TOTAL DEBT STOCK	380,321	441,508	473,541	478,092	251,485	293,224	306,301	301,959	100	100	100	100
Fixed	216,735	235,947	265,066	274,651	143,315	156,703	171,453	173,468	57.0	53.4	56.0	57.4
Variable	163,586	205,561	208,475	203,441	108,170	136,522	134,848	128,492	43.0	46.6	44.0	42.6
TL	251,836	312,837	347,347	347,659	166,525	207,768	224,674	219,579	66.2	70.9	73.4	72.7
Fixed	126,271	144,891	170,322	176,604	83,496	96,229	110,169	111,542	33.2	32.8	36.0	36.9
Variable	125,566	167,945	177,025	171,055	83,030	111,540	114,505	108,037	33.0	38.0	37.4	35.8
FX Debt	128,484	128,671	126,195	130,433	84,960	85,456	81,626	82,381	33.8	29.1	26.6	27.3
FX	127,721	128,671	126,195	130,433	84,455	85,456	81,626	82,381	33.6	29.1	26.6	27.3
Fixed	90,464	91,056	94,744	98,047	59,819	60,474	61,284	61,926	23.8	20.6	20.0	20.5
Variable	37,256	37,615	31,450	32,386	24,635	24,982	20,343	20,455	9.8	8.5	6.6	6.8
FX Indexed	764	0	0	0	505	0	0	0	0.2	0	0	0
Variable	764	0	0	0	505	0	0	0	0.2	0	0	0
Total Domestic Debt Stock	274,827	330,005	352,841	353,286	181,728	219,170	228,228	223,132	100	100	100	100
Total Fixed	140,614	155,076	175,740	182,153	92,980	102,993	113,674	115,046	51.2	47.0	49.8	51.6
Total Variable	134,213	174,928	177,101	171,133	88,748	116,177	114,554	108,086	48.8	53.0	50.2	48.4
Foreign Debt Stock	105,493	111,503	120,700	124,807	69,757	74,054	78,072	78,827	100	100	100	100
Fixed	76,121	80,871	89,326	92,498	50,334	53,710	57,779	58,421	72.2	72.5	74.0	74.1
Variable	29,373	30,632	31,374	32,308	19,422	20,344	20,294	20,406	27.8	27.5	26.0	25.9
TOTAL DEBT STOCK	380,321	441,508	473,541	478,092	251,485	293,224	306,301	301,959	100	100	100	100
TL	251,836	312,837	347,347	347,659	166,525	207,768	224,674	219,579	66.2	70.9	73.4	72.7
USD	73,893	72,799	71,691	74,882	48,862	48,349	46,372	47,295	19.4	16.5	15.1	15.7
EUR	35,994	35,990	36,172	36,716	23,801	23,902	23,397	23,190	9.5	8.2	7.6	7.7
SDR	12,965	14,224	11,012	11,426	8,573	9,447	7,123	7,216	3.4	3.2	2.3	2.4
JPY	4,774	4,849	6,415	6,489	3,157	3,220	4,150	4,098	1.3	1.1	1.4	1.4
Other	858	809	905	921	567	537	585	582	0.2	0.2	0.2	0.2
Total Domestic Debt Stock	274,827	330,005	352,841	353,286	181,728	219,170	228,228	223,132	72.3	74.7	74.5	73.9
TL	251,836	312,837	347,347	347,659	166,525	207,768	224,674	219,579	66.2	70.9	73.4	72.7
USD	16,590	12,905	5,495	5,627	10,970	8,571	3,554	3,554	4.4	2.9	1.2	1.2
EUR	6,401	4,263	0	0	4,233	2,831	0	0	1.7	1.0	0	0
Total Foreign Debt Stock	105,493	111,503	120,700	124,807	69,757	74,054	78,072	78,827	27.7	25.3	25.5	26.1
USD	57,303	59,894	66,196	69,255	37,892	39,778	42,818	43,741	15.1	13.6	14.0	14.5
JPY	4,774	4,849	6,415	6,489	3,157	3,220	4,150	4,098	1.3	1.1	1.4	1.4
EUR	29,593	31,727	36,172	36,716	19,568	21,072	23,397	23,190	7.8	7.2	7.6	7.7
SDR	12,965	14,224	11,012	11,426	8,573	9,447	7,123	7,216	3.4	3.2	2.3	2.4
Other	858	809	905	921	567	537	585	582	0.2	0.2	0.2	0.2
\$ Buying Rate (End Period FX buying)	1.5123	1.5057	1.5460	1.5833
USD/Euro	1.4156	1.4347	1.3254	1.3716
USD/SDR	1.5473	1.5631	1.5407	1.5609

(1) Provisional.

CURRENCY AND INTEREST COMPOSITION OF CENTRAL GOVERNMENT DOMESTIC DEBT STOCK ⁽¹⁾

CENTRAL GOVERNMENT	(Million TL)				(Million US Dollar)				(%)			
	2008	2009	2010	2011 Jan	2008	2009	2010	2011 Jan	2008	2009	2010	2011 Jan
Total Domestic Debt Stock	274,827	330,005	352,841	353,286	181,728	219,170	228,228	223,132	100	100	100	100
Total Fixed	140,614	155,076	175,740	182,153	92,980	102,993	113,674	115,046	51.2	47.0	49.8	51.6
Total Variable	134,213	174,928	177,101	171,133	88,748	116,177	114,554	108,086	48.8	53.0	50.2	48.4
TL	251,836	312,837	347,347	347,659	166,525	207,768	224,674	219,579	91.6	94.8	98.4	98.4
Fixed	126,271	144,891	170,322	176,604	83,496	96,229	110,169	111,542	45.9	43.9	48.3	50.0
Variable	125,566	167,945	177,025	171,055	83,030	111,540	114,505	108,037	45.7	50.9	50.2	48.4
CPI Indexed ⁽²⁾	21,686	37,658	54,031	56,360	14,339	25,011	34,949	35,597	0.1	11.4	15.3	16.0
FX	22,227	17,168	5,495	5,627	14,698	11,402	3,554	3,554	8.1	5.2	1.6	1.6
Fixed	14,344	10,185	5,418	5,549	9,485	6,764	3,505	3,505	5.2	3.1	1.5	1.6
Variable	7,884	6,983	76	78	5,213	4,638	49	49	2.9	2.1	0	0
FX Indexed	764	0	0	0	505	0	0	0	0.3	0	0	0
Variable	764	0	0	0	505	0	0	0	0.3	0	0	0
PUBLIC	65,751	60,923	51,393	51,906	43,478	40,461	33,243	32,784	23.9	18.5	14.6	14.7
TL	60,973	57,181	49,540	50,008	40,318	37,977	32,044	31,585	22.2	17.3	14.0	14.2
Fixed	19,560	18,787	20,589	21,679	12,934	12,477	13,317	13,692	7.1	5.7	5.8	6.1
Variable	41,413	38,394	28,951	28,329	27,384	25,499	18,726	17,892	15.1	11.6	8.2	8.0
CPI Indexed ⁽³⁾	14,801	10,794	7,768	6,965	9,787	7,169	5,024	4,399	0.1	3.3	2.2	2.0
FX	4,014	3,741	1,854	1,898	2,655	2,485	1,199	1,199	1.5	1.1	0.5	0.5
Fixed	3,846	3,582	1,854	1,898	2,543	2,379	1,199	1,199	1.4	1.1	0.5	0.5
Variable	168	159	0	0	111	106	0	0	0.1	0	0	0
FX Indexed	764	0	0	0	505	0	0	0	0.3	0	0	0
Variable	764	0	0	0	505	0	0	0	0.3	0	0	0
MARKET	209,076	269,082	301,448	301,379	138,250	178,709	194,986	190,349	76.1	81.5	85.4	85.3
TL	190,863	255,655	297,807	297,651	126,207	169,792	192,631	187,994	69.4	77.5	84.4	84.3
Fixed	106,710	126,104	149,733	154,925	70,562	83,751	96,852	97,850	38.8	38.2	42.4	43.9
Variable	84,153	129,551	148,074	142,726	55,646	86,040	95,779	90,144	30.6	39.3	42.0	40.4
CPI Indexed ⁽²⁾	6,885	26,864	46,263	49,395	4,552	17,842	29,924	31,198	0	8.1	13.1	14.0
FX	18,213	13,427	3,641	3,729	12,043	8,917	2,355	2,355	6.6	4.1	1.0	1.1
Fixed	10,497	6,602	3,565	3,650	6,941	4,385	2,306	2,306	3.8	2.0	1.0	1.0
Variable	7,716	6,824	76	78	5,102	4,532	49	49	2.8	2.1	0	0
\$ Buying Rate (End Period FX buying)	1.5123	1.5057	1.5460	1.5833
USD/Euro	1.4156	1.4347	1.3254	1.3716
USD/SDR	1.5473	1.5631	1.5407	1.5609

(1) Provisional.

(2) CPI-Indexed bonds consist of cash sales via auctions and non cash sales issued to CBRT.

(3) Contains non-competitive bids sale via auction and non-cash bonds issued to CBRT

COMPOSITION OF DOMESTIC DEBT BY HOLDERS (1)

(%)	2004	2005	2006	2007	2008	2009	2010	2011 Jan
Banking Sector	44.9	47.0	49.1	51.7	54.9	63.4	62.9	61.5
Public Banks	25.6	23.7	24.2	23.4	26.0	26.9	25.7	25.3
Private Banks	17.9	21.2	21.5	23.4	23.3	30.8	30.7	30.1
Foreign Banks	1.0	1.5	2.9	4.1	4.9	4.9	5.5	5.1
Development and Investment Banks	0.4	0.7	0.6	0.8	0.7	0.8	1.0	1.0
Non Banking Sector (2)	47.5	46.1	44.0	42.3	40.6	34.2	35.1	36.4
Retail Investors	14.4	10.5	8.8	5.9	5.5	2.9	1.5	1.6
Corporate Investors	19.0	17.3	18.1	18.5	19.8	18.5	17.0	17.3
Securities Mutual Funds	6.9	8.0	3.5	4.5	5.0	4.2	4.1	4.2
Non Residents	7.1	10.3	13.6	13.4	10.3	8.6	12.5	13.3
CBRT (3)	7.6	6.8	6.9	6.0	4.5	2.3	2.0	2.0
Total	100	100	100	100	100	100	100	100

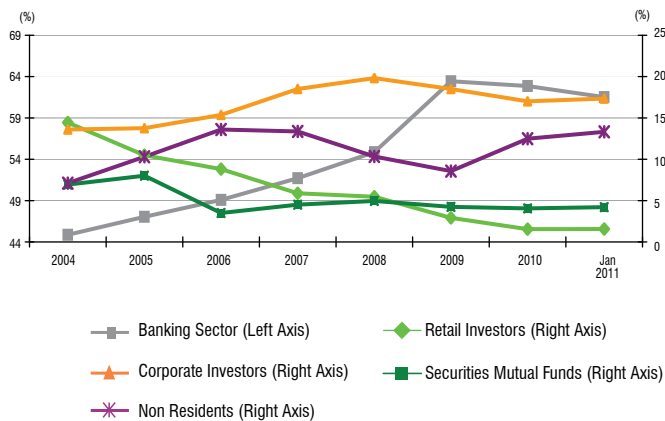
(1) Stock valuation based on Official Gazette prices.

(2) The Non-Banking Sector includes all corporate and retail investors except Saving Insurance Deposit Fund.

(3) Includes non-cash bonds and amounts related to CBRT Open Market Operations.

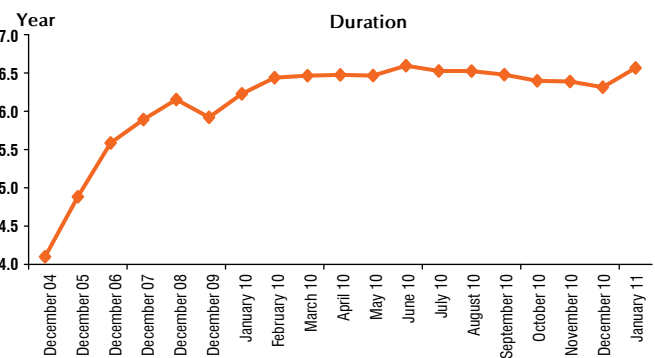
Source: CBRT

COMPOSITION OF DOMESTIC DEBT BY HOLDERS (1)



(1) Calculated according to the values of Official Gazette.

DURATION (1) AND TIME TO MATURITY (2) OF EXTERNAL BOND STOCK



(1) Provisional.

Time to Maturity

	2008	2009	2010	January 2011
Global Bonds	12.2	11.3	11.8	12.3
Euro Bonds	5.4	4.7	5.7	6.2
Total	10.3	9.6	10.3	10.9

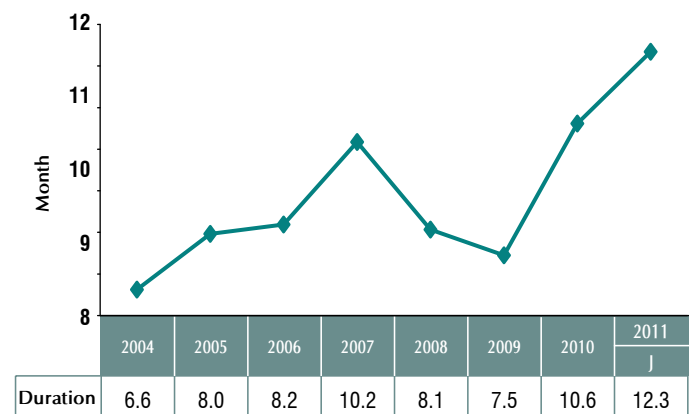
(2) As of January 31, 2011.

TIME TO MATURITY OF DOMESTIC DEBT STOCK (1)



(1) Figures show the weighted average of time to maturity of cash and non-cash stock with their stock values.

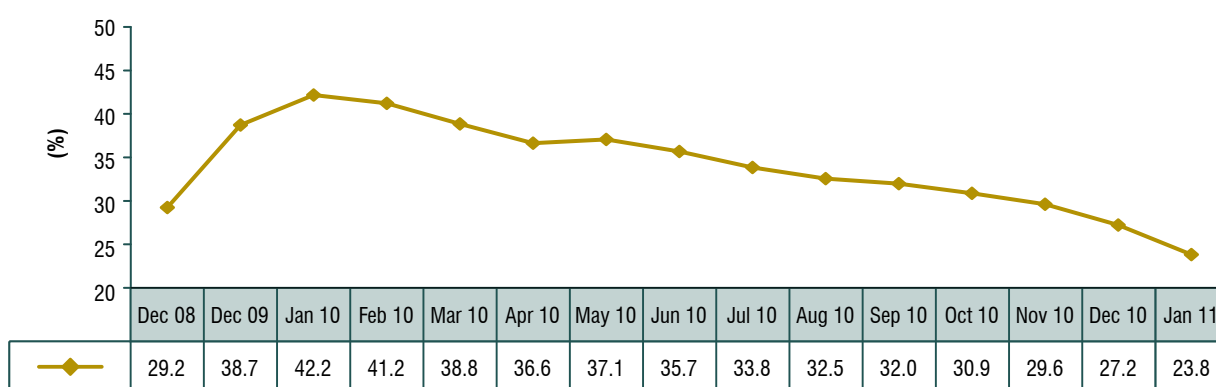
DURATION OF TL-DENOMINATED DOMESTIC DEBT STOCK (1) (2)



(1) Provisional.

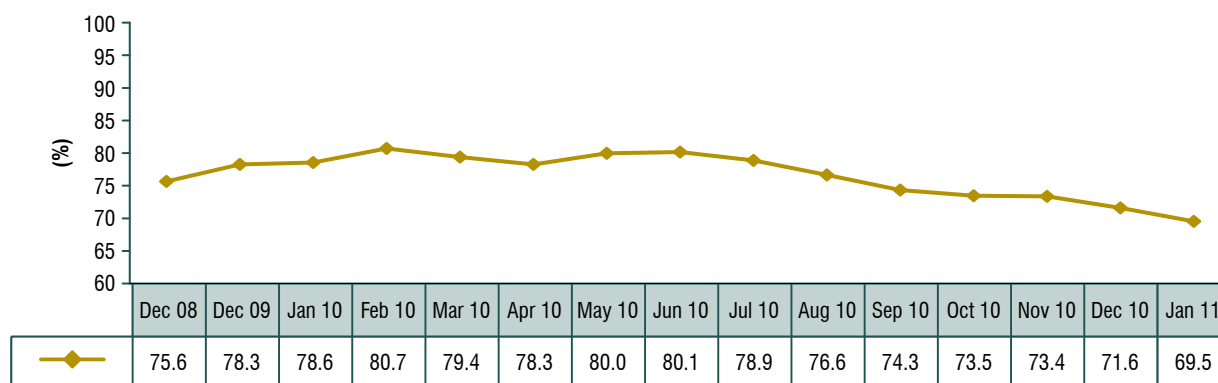
(2) Excluding non-cash securities and CPI indexed government bonds.

PERCENTAGE OF DOMESTIC DEBT MATURING WITHIN 12 MONTHS ⁽¹⁾



(1) Provisional.

INTEREST RATE RE-FIXING WITHIN 12 MONTHS (PERCENTAGE OF TL DEBT) ^{(1) (2)}



(1) Provisional.

(2) Include short term debt maturing within 12 months and floating rate debt.

ANNUAL COMPOUND REAL INTEREST OF DOMESTIC DEBT STOCK

(%)	2003	2004	2005	2006	2007	2008	2009	2010	2011
									Oca
Total Domestic Debt Stock	11.91	9.49	7.96	7.79	7.64	6.45	2.53	1.64	1.83
Public	6.53	7.50	5.61	6.82	5.57	5.32	2.50	1.95	2.05
TL	7.66	9.01	6.35	7.66	6.13	5.29	2.38	1.52	1.71
Fx den, / indexed	1.50	-2.60	-2.08	-3.66	-2.49	5.73	4.31	13.51	11.12
Market	16.45	10.66	9.02	8.17	8.38	6.81	2.54	1.59	1.80
TL	22.35	14.55	10.55	9.89	10.17	6.16	2.71	1.56	1.71
Fx den, / indexed	-0.04	-4.59	2.24	-0.68	-5.35	13.61	-0.68	4.22	9.04
Inflation expectation ⁽¹⁾	13.90	8.70	5.80	7.11	6.14	8.45	6.56	6.95	6.55

(1) Based on " Survey of Expectations of Annual CPI by the end of next 12 months" conducted by Central Bank.

TIME TO MATURITY OF CENTRAL GOVERNMENT EXTERNAL DEBT STOCK ^{(1) (2) (3)}

	2010				January 2011			
	Stock		Time to Maturity	Avg. Time to Maturity	Stock		Time to Maturity	Avg. Time to Maturity
	Million US \$	%	Year	Year	Million US \$	%	Year	Year
Debt By Maturity	76,596	100	10.5	8.8	77,330	100	10.8	9.1
Long Term (greater than 5 year)	76,596	100	10.5	8.8	77,330	100	10.8	9.1
Debt By Lender	76,596	100	10.5	8.8	77,330	100	10.8	9.1
Loan	32,411	42.3	10.8	6.7	32,793	42.4	10.7	6.8
Multilateral Agencies	19,388	25.3	10.2	6.9	19,769	25.6	10.1	6.9
(o/w IMF)	5,629	7.3	2.4	1.1	5,703	7.4	2.3	1.1
Bilateral Lenders	6,307	8.2	18.2	9.7	6,307	8.2	18.1	9.9
Others	6,717	8.8	5.6	3.4	6,717	8.7	5.5	3.5
Bond Issues	44,185	57.7	10.3	10.3	44,537	57.6	10.9	10.9
Debt By Currency	76,596	100	10.5	8.8	77,330	100	10.8	9.1
USD	42,818	55.9	10.9	10.2	43,741	56.6	11.3	10.6
JPY	4,150	5.4	19.1	10.1	4,098	5.3	19.0	10.4
EUR	23,397	30.5	10.2	7.9	23,190	30.0	10.6	8.2
SDR	5,645	7.4	2.4	1.1	5,719	7.4	2.3	1.1
Others	586	0.8	11.4	5.8	582	0.8	11.5	5.8

(1) As of January 31, 2011, provisional.

(2) Time to maturity is calculated considering the last principal payment date each credit's.
The average time to maturity is calculated considering each credit's principal payment dates.

(3) Does not contain SDR allocation.

PUBLIC NET DEBT STOCK ⁽¹⁾

(Million TL)	2003	2004	2005	2006	2007	2008	2009	2010 Q1	2010 Q2	2010 Q3
Total Public Sector Net Debt (I-II-III-IV)	250,584	274,179	270,244	258,153	248,396	267,970	309,809	315,340	312,965	309,494
I- Total Public Sector Debt Stock (Gross)	297,300	332,622	351,289	365,842	355,474	408,209	465,613	475,575	479,648	481,454
A-Domestic Debt	201,722	234,677	259,757	268,237	273,217	295,765	347,301	355,530	357,175	361,537
Central Government	194,387	224,483	244,782	251,470	255,310	274,827	330,005	340,678	343,142	347,759
Rest of the Public Sector	7,335	10,194	14,976	16,767	17,907	20,938	17,296	14,851	14,033	13,778
B- External Debt	95,578	97,945	91,531	97,605	82,256	112,444	118,312	120,045	122,473	119,917
Central Government	88,420	92,045	86,738	93,580	78,175	105,493	111,503	113,308	115,785	113,054
Rest of the Public Sector	7,158	5,900	4,794	4,025	4,082	6,951	6,809	6,737	6,688	6,863
II- Central Bank Net Assets	24,733	27,891	30,793	45,685	41,769	60,371	65,995	66,185	71,492	73,112
Net Foreign Assets	17,262	23,048	49,480	67,136	70,977	92,835	92,497	92,956	101,923	101,673
Other Asset and Obligations (Net)	7,471	4,843	-18,687	-21,451	-29,208	-32,464	-26,502	-26,771	-30,431	-28,560
III- Public Sector Deposits	13,053	17,235	32,223	38,256	34,603	41,516	47,713	50,678	51,129	54,318
Central Government	4,800	7,918	18,701	24,745	20,712	19,621	27,974	30,190	27,526	31,247
Rest of the Public Sector	8,253	9,317	13,522	13,511	13,892	21,895	19,739	20,487	23,603	23,071
IV-Unemployment Insurance Fund Net Assets	8,929	13,317	18,029	23,748	30,705	38,352	42,095	43,372	44,062	44,530
Net External Debt Stock	78,316	74,897	42,051	30,469	11,279	19,609	25,815	27,089	20,550	18,244
Net Domestic Debt Stock	172,269	199,282	228,192	227,685	237,116	248,361	283,994	288,251	292,415	291,249
Public Net Debt Stock/GDP (%)	55.1	49.0	41.6	34.0	29.5	28.2	32.5
GDP	454,781	559,033	648,932	758,391	843,178	950,534	952,635

(1) Provisional. (Due to update of foreign debt data figures may change retrospectively).

GENERAL GOVERNMENT NOMINAL DEBT STOCK ⁽²⁾ DEFINED BY EUROPEAN UNION STANDARDS ⁽¹⁾

(Million TL)	2003	2004	2005	2006	2007	2008	2009	2010 Q1	2010 Q2	2010 Q3
I- GENERAL GOVERNMENT DEBT STOCK ⁽³⁾	287,362	320,927	335,889	348,660	336,745	386,581	448,913	461,496	466,268	468,200
Central Government	282,807	316,528	331,520	345,050	333,485	380,321	441,508	453,986	458,927	460,813
Other Public Institutions	4,555	4,398	4,369	3,611	3,260	6,261	7,406	7,510	7,341	7,387
A- DOMESTIC DEBT STOCK	196,408	226,826	247,435	253,284	256,599	277,149	332,764	343,264	345,527	350,003
Central Government	194,387	224,483	244,782	251,470	255,310	274,827	330,005	340,678	343,142	347,759
Other Public Institutions	2,021	2,344	2,654	1,814	1,289	2,322	2,760	2,585	2,385	2,243
B- EXTERNAL DEBT STOCK	90,954	94,100	88,454	95,377	80,146	109,432	116,149	118,232	120,741	118,197
Central Government	88,420	92,045	86,738	93,580	78,175	105,493	111,503	113,308	115,785	113,054
Other Public Institutions	2,534	2,055	1,716	1,797	1,971	3,939	4,646	4,924	4,956	5,144
II- ADJUSTMENT ITEMS ⁽⁴⁾	18,939	10,264	3,539	827	-4,202	-11,345	-15,499	-17,124	-21,434	-21,529
Central Government	28,214	24,731	22,234	24,292	27,796	26,417	24,121	23,523	19,234	20,587
Other Public Institutions	-9,275	-14,466	-18,695	-23,465	-31,998	-37,762	-39,620	-40,647	-40,668	-42,116
GENERAL GOVERNMENT NOMINAL DEBT STOCK (I+II)	306,301	331,191	339,428	349,488	332,543	375,237	433,414	444,372	444,834	446,671
GDP	454,781	559,033	648,932	758,391	843,178	950,534	952,635
GENERAL GOVERNMENT NOMINAL DEBT STOCK / GDP (%)	67.4	59.2	52.3	46.1	39.4	39.5	45.5

(1) Provisional. (Due to update of foreign debt data figures may change retrospectively).

(2) Consolidated nominal debt stock defined in European System of Accounts 95 (ESA 95) deficit and debt manual.

(3) Unconsolidated gross debt of General Government.

(4) Adjustment Items: For Central Government: - nominal adjustment of zero coupon securities and valuation of inflation indexed bonds
- the stock of circulating coins issued by Treasury - securities held by central government institutions
For Other Public Institutions: - securities held by other public institutions.

TURKEY'S NET EXTERNAL DEBT STOCK

(Million USD Dollar)	2004	2005	2006	2007	2008	2009	2010 Q1	2010 Q2	2010 Q3
I- Gross External Debt, Excluding Banking Sector (A-a-b)	118,564	123,491	148,000	183,760	208,410	200,710	195,714	188,987	196,654
A. Gross External Debt	160,957	169,870	207,789	249,451	277,870	268,646	267,050	266,231	282,281
a. CBT (-)	21,410	15,425	15,678	15,801	14,066	13,305	12,545	11,384	12,320
b. Banks (-)	20,983	30,954	44,112	49,889	55,393	54,631	58,791	65,860	73,307
II- Banking Sector / Monetary Sector Net Foreign Assets ⁽²⁾	15,628	24,508	39,411	50,014	57,241	54,723	45,912	36,965	37,039
A. Monetary Authorities and Deposit Money Banks ⁽¹⁾	17,097	25,906	41,063	53,106	60,933	57,609	49,195	41,466	41,368
B. Investment and Development Banks & Participation Banks	-1,469	-1,398	-1,652	-3,092	-3,692	-2,887	-3,283	-4,501	-4,328
III-Net External Debt Stock (I-II)	102,937	98,983	108,589	133,746	151,169	145,988	149,802	152,022	159,615
Net External Debt Stock/GDP (%)	26.4%	20.6%	20.6%	20.6%	20.4%	23.7%
GDP (million US dollar)	390,387	481,497	526,429	648,754	742,094	616,753

(1) As the Treasury's obligations to the IMF is included in the liability side of the Monetary Survey table and Gross External Debt Stock, this amount is subtracted from CBT's liabilities in order to avoid double counting.

(2) Central Bank's Banking Survey data, that is not published anymore, is used for the period before 2005. After 2005, Monetary Survey data is used as a net foreign assets of monetary sector.

TREASURY GUARANTEES

TREASURY GUARANTEED EXTERNAL DEBT STOCK

(Million US Dollar)	2002	2003	2004	2005	2006	2007	2008	2009	2010 Q3
GRAND TOTAL	6,280	5,843	5,307	4,381	4,303	4,870	5,712	6,607	6,931
Central Administrations	25	15	5	0	0	0	0	0	0
Local Administrations	1,421	1,250	1,087	833	775	818	1,079	1,190	1,224
Funds	621	534	418	318	248	187	138	91	68
Financial Institutions ⁽¹⁾	439	413	306	186	79	138	254	785	1,196
Non-Financial Institutions ⁽²⁾	3,595	3,282	2,687	1,887	1,180	1,242	1,242	1,280	1,193
Private Sector Financial Institutions ⁽³⁾	178	348	805	995	1,489	2,077	2,702	3,074	3,133
Private Sector Non-Financial Institutions	0	0	0	161	532	409	296	187	117
INTEREST RATE COMPOSITION	6,280	5,843	5,307	4,381	4,303	4,870	5,712	6,607	6,931
Fixed	2,085	1,999	1,891	1,474	1,196	1,186	1,396	1,503	1,537
Floating	4,051	3,708	3,299	2,826	3,015	3,498	4,045	4,840	5,157
Combined	143	135	118	81	91	187	271	264	236
CURRENCY COMPOSITION	6,280	5,843	5,307	4,381	4,303	4,870	5,712	6,607	6,931
USD	4,248	3,680	3,135	2,575	2,248	2,167	2,237	2,520	2,678
JPY	561	453	273	186	121	89	90	64	33
EUR	1,167	1,462	1,713	1,492	1,845	2,565	3,358	3,999	4,197
OTHERS	303	248	186	127	88	50	27	24	23

(1) Represents Public Banks.

(2) Represents SOEs, Istanbul Gas Distribution Company (IGDAS), Izmit Gas Distribution Company (IZGAZ) and Istanbul Olympic Games Preparation & Organizing Board. The stocks of the privatised institutions take place in here until the privatisation date.

(3) Represents Turkey Industrial Development Bank (TSKB).

TIME TO MATURITY OF TREASURY GUARANTEED DEBT STOCK ⁽¹⁾

(Year)	2009 Q4		2010 Q3	
	Time to Maturity	Avg. Time to Maturity	Time to Maturity	Avg. Time to Maturity
Public	11.8	7.0	12.3	7.5
General Government	10.1	5.9	11.0	6.6
Local Administrations	10.8	6.3	11.5	6.9
Funds	2.3	1.6	1.7	1.2
Financial Institutions	17.8	11.0	16.4	10.1
Public Banks	17.8	11.0	16.4	10.1
Non Financial Institutions	9.6	5.5	10.7	5.4
SOEs	10.0	5.5	9.5	5.4
Other	1.1	0.6	0.3	0.3
Private	9.6	5.8	10.3	6.0
Financial Institutions	10.1	6.0	10.6	6.2
Banks	10.1	6.0	10.6	6.2
Non-Financial Institutions	2.2	1.2	1.8	1.0
Companies	2.2	1.2	1.8	1.0
Total	10.7	6.4	11.3	6.8

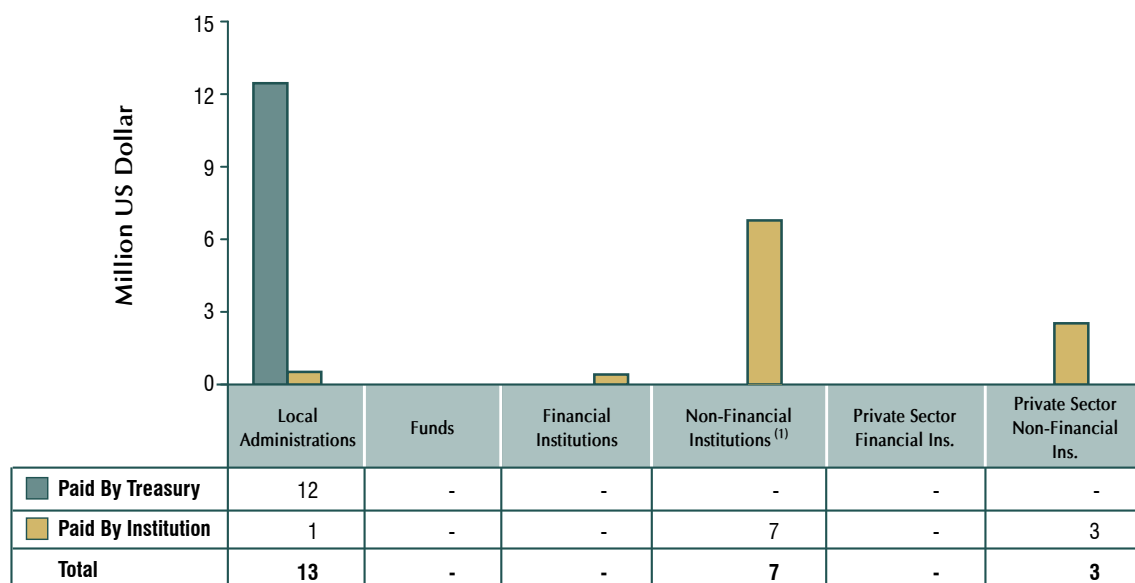
(1) Provisional.

TREASURY GUARANTEED DEBT AGREEMENTS ⁽¹⁾ (2002-2011)

(Million US Dollar)	2002	2003	2004	2005	2006	2007	2008	2009	2010	2011 January
Public	251	0	2	208	1.778	637	1.393	2.177	1.102	..
Financial Institutions	0	0	0	0	255	410	731	1.652	754	..
SOEs	209	0	0	61	961	0	444	184	0	..
Local Administrations	43	0	2	147	561	227	217	341	348	..
Private	67	218	806	590	255	266	607	582	100	..
TOTAL	319	218	808	798	2.032	903	1.999	2.759	1.202	..

(1) Contract based

REPAYMENTS OF TREASURY GUARANTEED DEBT (January - 2011)



(1) Includes SOEs, IGDAS - Istanbul Gas Distributions Company, IZGAZ - Izmit Distribution Company, Istanbul Olympic Games Preparation & Organizing Board.

REPAYMENTS OF TREASURY GUARANTEED DEBT (2002 - 2011)

BY BUDGET TYPE (Million US Dollar)	2002	2003	2004	2005	2006	2007	2008	2009	2010	2011 ⁽¹⁾	Total
Central Government	12	12	11	0	0	0	0	0	0	0	35
Paid by Treasury	12	12	11	0	0	0	0	0	0	0	35
Paid by Institution	0	0	0	0	0	0	0	0	0	0	0
Local Administrations	528	390	355	275	237	187	137	130	143	13	2,394
Paid by Treasury	458	308	243	194	138	85	54	50	57	12	1,599
Paid by Institution	69	83	111	81	99	101	83	80	86	1	794
Funds	158	159	149	125	85	67	32	37	26	0	838
Paid by Treasury	0	0	0	0	0	0	0	0	0	0	0
Paid by Institution	158	159	149	125	85	67	32	37	26	0	838
Financial Institutions	58	110	121	119	114	43	22	8	39	0	634
Paid by Treasury	0	0	0	0	0	0	0	0	0	0	0
Paid by Institution	58	110	121	119	114	43	22	8	39	0	634
Non Financial Institutions ⁽²⁾	985	1,025	1,011	725	333	251	237	200	177	7	4,951
Paid by Treasury	437	158	45	18	74	116	83	121	6	0	1,058
Paid by Institution	549	866	965	707	260	136	154	78	171	7	3,893
Private Sector Financial Institutions	6	51	9	31	61	116	204	188	199	0	865
Paid by Treasury	0	0	0	0	0	0	0	0	0	0	0
Paid by Institution	6	51	9	31	61	116	204	188	199	0	865
Private Sector Non Financial Institutions	0	0	0	0	247	150	119	113	93	3	725
Paid by Treasury	0	0	0	0	0	0	0	0	0	0	0
Paid by Institution	0	0	0	0	247	150	119	113	93	3	725
TOTAL	1,747	1,747	1,655	1,275	1,076	814	752	677	676	23	10,442
Paid by Treasury	907	478	300	213	211	201	137	171	62	12	2,692
Paid by Institution	840	1,269	1,355	1,063	865	613	615	506	614	10	7,749

(1) As of January 31, 2011.

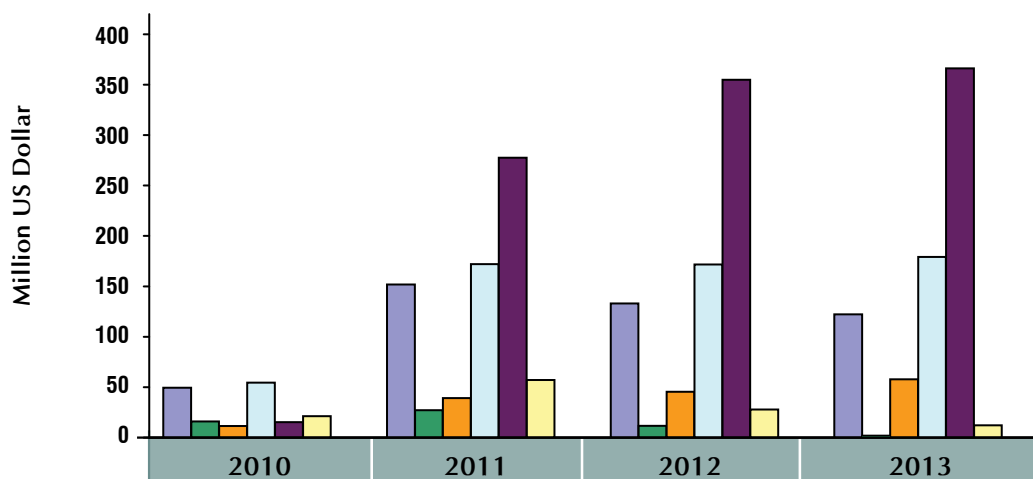
(2) Includes SOEs, IGDAS - Istanbul Gas Distributions Company, IZGAZ - Izmit Distribution Company, Istanbul Olympic Games Preparation & Organizing Board.

RISK ACCOUNT (1)

(Thousand TL)	January 2010	January 2011
Total Payments	13,672	29,330
Non-Financial Institutions	0	0
Financial Institutions	0	0
Private Sector Financial Institutions	0	0
BOT	9,547	10,211
Local Administrations	4,125	19,118
Central Government	0	0
FX Differences	0	0
Total Income (-) (2)	559	1
Non-Financial Institutions	0	0
Financial Institutions	212	0
Private Sector Financial Institutions	346	0
BOT	0	0
Local Administrations	0	0
Central Government	0	0
CBRT Interest Revenue	1	1

- (1) Risk Account which belongs to the Treasury has been established at the Central Bank of Turkey for the undertaking of the repayments by the Treasury for Treasury guarantees.
- (2) Provisional.

TREASURY GUARANTEED DEBT PAYMENT PROJECTIONS (1)



	2010	2011	2012	2013
Local Administrations	49	152	133	122
Funds	16	27	12	2
Financial Ins.	12	39	46	58
Non-Financial Ins.	54	172	172	179
Private Sector Financial Ins.	15	278	355	366
Private Sector Non-Financial Ins.	21	57	28	12
Total	168	725	745	740

(1) Provisional as of September 30, 2010

TREASURY RECEIVABLES

TREASURY RECEIVABLES STOCK (1)

	2010		January 2011	
	Million TL	%	Million TL	%
Local Administrations	14,682	58,1	14,793	57,7
SOE's	6,019	23,8	6,183	24,1
Banks	888	3,5	933	3,6
Social Security Institution	9	0	10	0,0
Public Banks	585	2,3	611	2,4
Public Enterprises	1,285	5,1	1,248	4,9
Central Administrations	1,723	6,8	1,760	6,9
Organizations (2)	23	0,1	23	0,1
Insurance Institutions	48	0,2	49	0,2
Private Institutions (3)	4	0	5	0,0
Foundations (4)	21	0,1	20	0,1
TOTAL	25,288	100	25,635	100

(1) Provisional. Indicates the total amount of outstanding overdue and projected receivables.

(2) Represents Industrial Zones, Trade Unions and Istanbul Olympic Games Preparation & Organizing Board.

(3) Represents privatized SOE's and corporations governed by foundations.

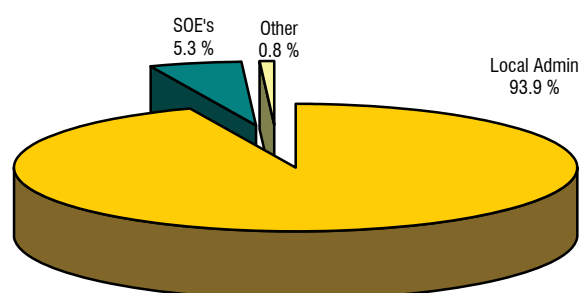
(4) Represents universities subordinated by foundations and Foundation of Technological Improvements in Turkey.

OUTSTANDING OVERDUE RECEIVABLES (1)

	2010		January 2011	
	Million TL	%	Million TL	%
Local Administrations	7,790	93,8	7,820	93,9
SOE's	433	5,4	440	5,3
Central Administrations	67	0,8	67	0,8
TOTAL	8,306	100	8,327	100

(1) Provisional

OUTSTANDING OVERDUE RECEIVABLES (January 2011)

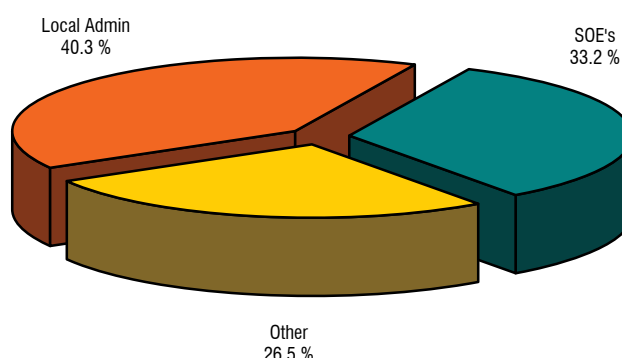


OUTSTANDING RECEIVABLES EXCLUDING OVERDUES (1)

	2010		January 2011	
	Million TL	%	Million TL	%
Local Administrations	6,892	40,6	6,974	40,3
SOE's	5,570	32,8	5,743	33,2
Banks	888	5,2	933	5,4
Social Security Institutions	9	0,1	10	0,1
Public Banks	585	3,4	611	3,5
Public Enterprises	1,285	7,6	1,248	7,2
Central Administrations	1,656	9,8	1,693	9,8
Organizations	23	0,1	23	0,1
Insurance Institutions	48	0,3	49	0,3
Private Institutions	4	0	5	0,0
Foundations	21	0,1	20	0,1
TOTAL	16,982	100	17,308	100

(1) Provisional

OUTSTANDING RECEIVABLES EXCLUDING OVERDUES (Jan. 2011)



TIME TO MATURITY OF PROJECTED RECEIVABLES STOCK (1) (2)

(Year)	2010		January 2011	
	Time to Maturity	Avg. Time to Maturity	Time to Maturity	Avg. Time to Maturity
Local Administrations	14.8	7.8	14.7	7.7
SOEs	7.7	4.8	7.6	4.7
Banks	7.1	3.9	7.0	3.8
Public Banks	9.9	5.6	9.8	5.6
Central Government	10.0	7.8	9.9	7.7
Public Enterprises	7.0	3.7	6.9	3.7
Other Administrations ⁽³⁾	3.2	1.6	3.2	1.6
Insurance Institutions	3.2	1.8	3.2	1.7
Foundations ⁽⁴⁾	5.5	2.8	5.5	3.0
Private Institutions ⁽⁵⁾	9.0	3.8	8.9	3.7
Social Security Institutions	12.5	6.8	12.4	6.8
Total	9.0	5.5	8.9	5.4

(1) Within the framework of Laws No: 5216 and 5393 debts promised by means of exchange, set off and deduction are excluded.

(2) Overdue receivables are excluded.

(3) Represents Industrial Zones, Trade Unions and Istanbul Olympic Games Preparation & Organizing Board.

(4) Represents universities subordinated by foundations and the Foundation of Technological Improvements in Turkey.

(5) Represents privatized SOE's and corporations governed by foundations.

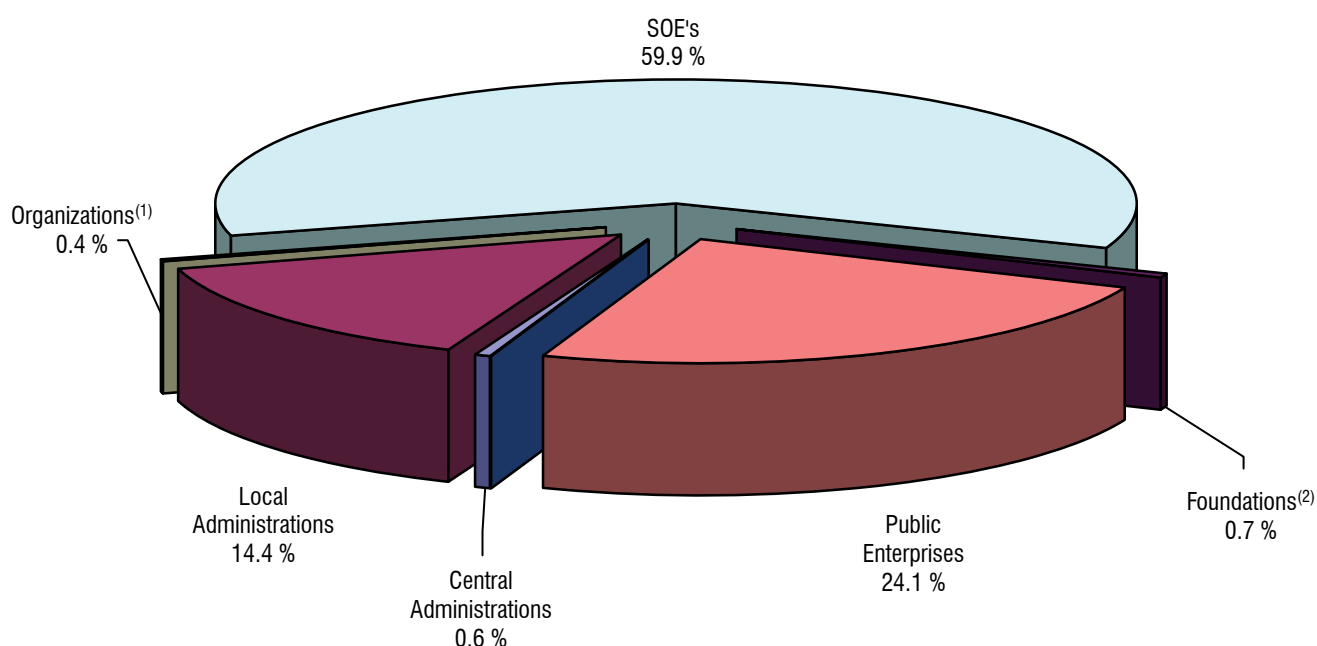
COLLECTIONS FROM TREASURY RECEIVABLES (1)

	2007		2008		2009		2010		January 2011	
	Million TL	%	Million TL	%	Million TL	%	Million TL	%	Million TL	%
Funds	1,784	55.8	1,701	39.5	0	0	0	0.0	0	0.0
Local Administrations	665	20.7	610	14.2	631	35.1	453	17.1	38	14.4
SOE's	505	15.8	1,734 (2)	40.3	645	36.0	1,684	63.7	159	59.9
Banks	109	3.4	123	2.9	131	7.3	157	5.9	0	0.0
Public Banks	66	2.1	66	1.5	66	3.7	67	2.5	0	0.0
Public Enterprises	5	0.2	6	0.1	225	12.5	184	7.0	64	24.1
Central Administrations	15	0.5	22	0.5	46	2.5	53	2.0	1	0.6
Organizations	24	0.8	15	0.4	21	1.2	16	0.6	1	0.4
Insurance Institutions	12	0.4	13	0.3	16	0.9	21	0.8	0	0.0
Private Institutions	8	0.2	9	0.2	9	0.5	3	0.1	0	0.0
Foundations	3	0.1	3	0.1	4	0.2	3	0.1	2	0.7
Social Security Institution	0	0	1	0	1	0.1	1	0.0	0	0.0
TOTAL	3,198	100	4,302	100	1,794	100	2,641	100	266	100

(1) Provisional

(2) Including the Offsetting Transaction Due to The Provisional Article 16 of Law No. 4749

COLLECTIONS FROM TREASURY RECEIVABLES (January 2011)



(1) Represents Industrial Zones, Trade Unions and Istanbul Olympic Games Preparation & Organizing Board.

(2) Represents universities subordinated by foundations and Foundation of Technological Improvemets in Turkey.

DEVELOPMENTS IN THE CREDIT RATING OF TURKEY

LONG TERM FOREIGN CURRENCY

	Standard & Poor's	Moody's	Fitch	JCR
2004	BB- (stable)	B1 (stable)	B+ (positive)	B+ (positive)
13.01.2005			BB- (stable)	
11.02.2005		B1 (positive)		
10.03.2005				BB- (positive)
06.12.2005			BB- (positive)	
14.12.2005		Ba3 (stable)		
2005	BB- (stable)	Ba3 (stable)	BB- (positive)	BB- (positive)
23.01.2006	BB- (positive)			
27.06.2006	BB- (stable)			
2006	BB- (stable)	Ba3 (stable)	BB- (positive)	BB- (positive)
10.05.2007			BB- (stable)	
28.12.2007				BB- (stable)
2007	BB- (stable)	Ba3 (stable)	BB- (stable)	BB- (stable)
03.04.2008	BB- (negative)			
31.07.2008	BB- (stable)			
13.11.2008	BB- (negative)			
2008	BB- (negative)	Ba3 (stable)	BB- (stable)	BB- (stable)
17.09.2009	BB- (stable)			
18.09.2009		Ba3 (positive)		
03.12.2009			BB+ (stable)	
2009	BB- (stable)	Ba3 (positive)	BB+ (stable)	BB- (stable)
08.01.2010		Ba2 (stable)		
01.02.2010				BB (stable)
19.02.2010	BB (positive)			
05.10.2010		Ba2 (positive)		
03.12.2010			BB+ (positive)	
Current	BB (positive)	Ba2 (positive)	BB+ (positive)	BB (stable)

LONG TERM TL

	Standard & Poor's	Moody's	Fitch	JCR
2004	BB (stable)	B2 (stable)	B+ (stable)	B+ (positive)
13.01.2005			BB- (stable)	
11.02.2005		B1 (positive)		
10.03.2005				BB- (positive)
06.12.2005			BB- (positive)	
14.12.2005		Ba3 (stable)		
2005	BB (stable)	Ba3 (stable)	BB- (positive)	BB- (positive)
23.01.2006	BB (positive)			
27.06.2006	BB (stable)			
2006	BB (stable)	Ba3 (stable)	BB- (positive)	BB- (positive)
10.05.2007			BB- (stable)	
12.12.2007			BB (stable)	
28.12.2007				BB- (stable)
2007	BB (stable)	Ba3 (stable)	BB (stable)	BB- (stable)
03.04.2008	BB (negative)			
31.07.2008	BB (stable)			
13.11.2008	BB (negative)			
2008	BB (negative)	Ba3 (stable)	BB (stable)	BB- (stable)
17.09.2009	BB (stable)			
18.09.2009		Ba3 (positive)		
03.12.2009			BB+ (stable)	
2009	BB (stable)	Ba3 (positive)	BB+ (stable)	BB- (stable)
08.01.2010		Ba2 (stable)		
01.02.2010				BB (stable)
19.02.2010	BB+ (positive)			
05.10.2010		Ba2 (positive)		
03.12.2010			BB+ (positive)	
Current	BB+ (positive)	Ba2 (positive)	BB+ (positive)	BB (stable)

Note: Islamic International Rating Agency (IIRA) has assigned BBB- credit rating for long-term local currency obligations and BB+ credit rating for long-term foreign currency obligations on October 5, 2008.

CALENDAR

DOMESTIC BORROWING CALENDAR

	FIRST WEEK	SECOND WEEK	THIRD WEEK	FOURTH WEEK	FIFTH WEEK
Auction Announcement	04/03	-	-	-	-
Zero-coupon TL Auction	-	07/03 - 08/03	-	-	-
Fixed-Coupon TL Auction	-	08/03	-	-	-
Floating Rate Note Auction	-	-	-	-	-
CPI Indexed Auction	-	-	-	-	-
Announcement of Monthly Auction Calendar	-	-	-	-	31/03

DATA DISSEMINATION SCHEDULE

8 March	Treasury Cash Balance Realizations (February 2011)
21 March	Realizations of Consolidated Government Sector Balance (January 2010)
21 March	Program Defined Central Government Primary Balance (February 2011)
21 March	General Budget Financing (February 2011)
21 March	Central Government Budget Financing (February 2011)
21 March	Central Government Debt Statistics (February 2011)
21 March	Central Government Debt Stock According to IMF SDDS Program (February 2011)
21 March	Domestic Debt Statistics (February 2011)
21 March	External Debt Stock of Central Government (February 2011)
21 March	Treasury Receivable Statistics (February 2011)
28 March	Central Government Budget Realizations and Financing According to IMF SDDS Program (February 2011)

PRIMARY DEALER BANKS

Bank Name	Web-Address	Phone
Akbank	www.akbank.com.tr	0-212-270 00 44
Deutsche Bank Inc.	www.deutschebank.com.tr	0-212-317 01 00
Fortis Bank Inc.	www.fortis.com.tr	0-212-274 42 80
Finansbank Inc.	www.finansbank.com.tr	0-212-318 59 01
HSBC Bank Inc.	www.hsbc.com.tr	0-212-366 30 00
ING Bank Inc.	www.ingbank.com.tr	0-212-335 10 00
T. Garanti Bank Inc.	www.garanti.com.tr	0-212-318 18 18
T. İş Bank Inc.	www.isbank.com.tr	0-212-316 00 00
T. Vakıflar Bank	www.vakifbank.com.tr	0-312-455 75 75
T. Halk Bank Inc.	www.halkbank.com.tr	0-212-393 05 05
T.C. Ziraat Bank Inc.	www.ziraat.com.tr	0-212-285 22 80
Yapı ve Kredi Bank Inc.	www.ykb.com.tr	0-212-339 70 00

PUBLIC FINANCE STATISTICS

PUBLICIZED STATISTICS

STATISTICS	WEB ADDRESS
Consolidated Government Sector Balance (CGS) Consolidated Government Sector Realization Figures Cumulative Figures and Targets (2010) Monthly Figures (2010) Program Defined Central Government Primary Balance 2009 Central Budget Cumulatives 2009 Central Budget Monthly Archives 2010 2009 2008 2007 2006 2005 2004	http://www.treasury.gov.tr/irj/portal/anonymous/CGS/?guest_user=treasury
Budget Financing Statistics Central Government Budget Financing Data (2006-2011) General Budget Financing Data (2006-2011) Consolidated Budget Financing Data (1994-2005)	http://www.treasury.gov.tr/irj/portal/anonymous/BudgetFinancing/?guest_user=treasury
Treasury Cash Balance Realizations Cash Realizations-2010 Cash Realizations-2009 Cash Realizations-2008 Cash Realizations-2007 Cash Realizations-2006 Cash Realizations-2005 Cash Realizations-2004	http://www.treasury.gov.tr/irj/portal/anonymous/CashBalance/?guest_user=treasury
General Government Nominal Debt Stock Defined By European Union Standarts EUdebtstock08 Note on General Government Nominal Debt Stock Defined By European Union Standarts	http://www.treasury.gov.tr/irj/portal/anonymous/NominalDebtStockDefinedEU/?guest_user=treasury
Public Net Debt Stock Explanations - Calculation of Public Net Debt Stock Data - Public Net Debt Stock	http://www.treasury.gov.tr/irj/portal/anonymous/PublicNetDebtStock/?guest_user=treasury
Turkey's Net External Debt Stock Explanations - Calculation of Turkey's Net External Debt Stock Turkey's Net External Debt Stock	http://www.treasury.gov.tr/irj/portal/anonymous/TrNetExtDebtStock/?guest_user=treasury
Economic and Financial Data for Turkey Gross External Debt (SDDS) Central Government Debt Stock Monthly Central Government Debt Stock-Graph Central Government Gross Debt - Detail (2002-...) Currency and Interest Rate Composition of Outstanding Debt of Central Government (2003-...) Monthly Consolidated Budget Debt Stock2001-2005 Monthly Consolidated Budget Debt Stock2001-2005 Currency and Interest Rate Composition	http://www.treasury.gov.tr/irj/portal/anonymous?NavigationTarget=navurl://81a588685fdd36b53c10120ec806f28f http://www.treasury.gov.tr/irj/portal/anonymous?NavigationTarget=navurl://81a588685fdd36b53c10120ec806f28f http://www.treasury.gov.tr/irj/portal/anonymous/CentralGovernmentDebtStock/?guest_user=treasury
Domestic Debt Statistics Domestic Debt Statistic 2011 Domestic Debt Statistic 2010 Domestic Debt Statistic 2009 Domestic Debt Statistic 2008 Domestic Debt Statistic 2007 Domestic Debt Statistic 2006 Domestic Debt Statistic 2005 Domestic Debt Statistic 2004 Domestic Debt Statistic 2003 Domestic Debt Statistic 2002 Domestic Debt Statistic 2001 Domestic Debt Statistic 2000 Domestic Debt Statistic 1999 Domestic Debt Statistic 1998 Annual Statistic	http://www.treasury.gov.tr/irj/portal/anonymous/DomesticDebt/?guest_user=treasury
External Debt Statistics I - Outstanding External Debt Statistics (2001-... Data) Announcements About Gross External Debt Statistics of Turkey Gross External Debt Statistics of Turkey II - Outstanding External Debt of Treasury Guaranteed Credits (1996-... Data) Disbursed Outstanding Debt Of Treasury Guaranteed External Credits III - BOT-BO Projects That Has Been Guaranteed By The Treasury Built-Operate-Transfer (BOT) Projects That Has Been Guaranteed By The Treasury Built-Operate (BO) Projects That Has Been Guaranteed By The Treasury External Debt Statistics Central Government Foreign Market Bond Issues (1988-...) Central Government External Debt (1986-...)-Detailed Long Term Public Sector Gross External Debt (1986-...)	http://www.treasury.gov.tr/irj/portal/anonymous/ExternalDebt/?guest_user=treasury
Treasury Receivable Statistics The Stock of Treasury Receivables Outstanding Overdue Receivables in Yearly Basis Overdue Receivables By Type of Resources Collections By Type of Resources Collections By Borrower Actual Collections By Type Payments Undertaken Due To The Treasury Guarantees Projected Receivable By Type of Sources	http://www.treasury.gov.tr/irj/portal/anonymous/TreasuryReceivable/?guest_user=treasury
Time Series of Debt Statistics Information On Debt Stock Statistics Central Government Foreign Market Bond Issues (1988-...) Long Term Public Sector Gross External Debt (1986-...) Gross External Debt Statistics compiled with SDDS - QUARTERLY (1989-...) Gross External Debt Statistics of Turkey - QUARTERLY (1989-...) Net External Debt Statistics of Turkey - YEARLY (1989-...) Central Government External Debt (1986-...)-Detailed Central Government Gross Debt (1986-...) Central Government Domestic Debt (1986-...)-Detailed	http://www.treasury.gov.tr/irj/portal/anonymous/TimeSeries/?guest_user=treasury

ANNEX

HOLDERS OF CENTRAL GOVERNMENT DEBT STOCK (1)

(Million TL)	2005	2006	2007	2008	2009	2010	January 2011
TOTAL DEBT STOCK	331,520	345,050	333,485	380,321	441,508	474,949	478,092
Domestic Debt Stock	244,782	251,470	255,310	274,827	330,005	353,115	353,286
Market	169,314	180,060	188,434	209,076	269,082	301,254	301,379
Public Sector	75,468	71,410	66,876	65,751	60,923	51,862	51,906
External Debt Stock	86,738	93,580	78,175	105,493	111,503	121,833	124,807
Loan	44,390	42,491	33,050	46,655	49,921	52,926	54,291
Multilateral Agencies	29,774	27,303	20,126	28,600	32,200	32,728	33,670
(IMF Credit)	19,654	15,123	8,321	12,950	11,948	8,813	9,030
SDR Allocation	0	0	0	0	2,257	2,313	2,370
Bilateral Lenders	7,066	7,136	5,744	8,375	8,516	9,777	9,986
Other	7,550	8,052	7,180	9,680	9,204	10,421	10,635
Bond Issues	42,348	51,089	45,125	58,838	61,582	68,907	70,515

(Million US Dollar)	2005	2006	2007	2008	2009	2010	January 2011
TOTAL DEBT STOCK	247,071	245,482	286,327	251,485	293,224	305,767	301,959
Domestic Debt Stock	182,428	178,906	219,207	181,728	219,170	227,332	223,132
Market	126,184	128,102	161,788	138,250	178,709	193,944	190,349
Public Sector	56,244	50,804	57,419	43,478	40,461	33,388	32,784
External Debt Stock	64,643	66,576	67,120	69,757	74,054	78,435	78,827
Loan	33,082	30,229	28,377	30,850	33,154	34,074	34,290
Multilateral Agencies	22,189	19,424	17,280	18,912	21,385	21,070	21,266
(IMF Credit)	14,647	10,759	7,144	8,563	7,935	5,674	5,703
SDR Allocation	0	0	0	0	1,499	1,489	1,497
Bilateral Lenders	5,266	5,077	4,932	5,538	5,656	6,295	6,307
Other	5,627	5,729	6,165	6,401	6,113	6,709	6,717
Bond Issues	31,560	36,347	38,744	38,907	40,899	44,361	44,537

(Percentage)	2005	2006	2007	2008	2009	2010	January 2011
TOTAL DEBT STOCK	100	100	100	100	100	100	100
Domestic Debt Stock	73.8	72.9	76.6	72.3	74.7	74.3	73.9
Market	51.1	52.2	56.5	55.0	60.9	63.4	63.0
Public Sector	22.8	20.7	20.1	17.3	13.8	10.9	10.9
External Debt Stock	26.2	27.1	23.4	27.7	25.3	25.7	26.1
Loan	13.4	12.3	9.9	12.3	11.3	11.1	11.4
Multilateral Agencies	9.0	7.9	6.0	7.5	7.3	6.9	7.0
(IMF Credit)	5.9	4.4	2.5	3.4	2.7	1.9	1.9
SDR Allocation	0.0	0.0	0.0	0.0	0.5	0.5	0.5
Bilateral Lenders	2.1	2.1	1.7	2.2	1.9	2.1	2.1
Other	2.3	2.3	2.2	2.5	2.1	2.2	2.2
Bond Issues	12.8	14.8	13.5	15.5	13.9	14.5	14.7

(GDP %)	2005	2006	2007	2008	2009	2010	January 2011
TOTAL DEBT STOCK	51.1	45.5	39.6	40.0	46.3
Domestic Debt Stock	37.7	33.2	30.3	28.9	34.6
Market	26.1	23.7	22.3	22.0	28.2
Public Sector	11.6	9.4	7.9	6.9	6.4
External Debt Stock	13.4	12.3	9.3	11.1	11.7
Loan	6.8	5.6	3.9	4.9	5.2
Multilateral Agencies	4.6	3.6	2.4	3.0	3.4
(IMF Credit)	3.0	2.0	1.0	1.4	1.3
SDR Allocation	0.0	0.0	0.0	0.0	0.2
Bilateral Lenders	1.1	0.9	0.7	0.9	0.9
Other	1.2	1.1	0.9	1.0	1.0
Bond Issues	6.5	6.7	5.4	6.2	6.5

(1) Provisional.

DOMESTIC DEBT STOCK

(Million TL)	2006	2007	2008	2009	2010	2011
						January ⁽¹⁾
TOTAL DOMESTIC DEBT	251,470	255,310	274,827	330,005	352,841	353,286
CASH	208,376	220,582	248,691	313,232	350,379	350,824
BOND	198,783	214,448	234,713	299,196	340,854	343,034
BILL	9,594	6,134	13,978	14,036	9,525	7,790
NON-CASH	43,094	34,728	26,136	16,772	2,463	2,462
BOND	43,094	34,728	26,136	16,772	2,463	2,462
GDP	758,391	843,178	950,534	952,635
TOTAL DOMESTIC DEBT STOCK/GDP (%)	33.2	30.3	28.9	34.6

(1) Provisional.

FOREIGN CURRENCY DENOMINATED AND INDEXED DOMESTIC DEBT STOCK

(Million TL)	2006	2007	2008	2009	2010	2011
						January ⁽¹⁾
Cash	32,927	24,931	22,227	17,168	5,495	5,627
USD	27,156	19,601	16,415	12,905	5,495	5,627
EURO	5,771	5,330	5,812	4,263	0	0
NON-CASH	1,744	1,211	764	0	0	0
USD	357	268	174	0	0	0
EURO	1,387	943	589	0	0	0
TOTAL	34,670	26,142	22,991	17,168	5,495	5,627

(1) Provisional.

GROSS EXTERNAL DEBT PROFILE of TURKEY

GROSS EXTERNAL DEBT (Million \$)	2002	2003	2004	2005	2006	2007	2008	2009	2010 Q1	2010 Q2	2010 Q3
TOTAL	129,546	144,073	160,957	169,870	207,789	249,451	277,870	268,646	267,050	266,231	282,281
SHORT TERM	16,424	23,013	32,205	38,283	42,623	43,135	50,448	49,410	54,355	62,041	68,133
Public Sector	915	1,341	1,840	2,133	1,750	2,163	3,248	3,598	4,697	5,669	7,046
Central Bank	1,655	2,860	3,287	2,763	2,563	2,282	1,874	1,776	1,669	1,511	1,633
Private Sector	13,854	18,812	27,078	33,387	38,310	38,690	45,326	44,036	47,989	54,861	59,454
LONG TERM	113,122	121,060	128,752	131,587	165,166	206,316	227,422	219,236	212,695	204,190	214,148
Public Sector	63,619	69,503	73,828	68,278	69,837	71,361	75,037	79,854	80,260	79,142	84,248
Central Bank	20,348	21,513	18,123	12,662	13,115	13,519	12,192	11,529	10,876	9,873	10,687
Private Sector	29,156	30,044	36,801	50,646	82,214	121,435	140,192	127,853	121,559	115,176	119,212
PUBLIC SECTOR	64,534	70,844	75,668	70,411	71,587	73,524	78,285	83,452	84,957	84,811	91,294
Short Term	915	1,341	1,840	2,133	1,750	2,163	3,248	3,598	4,697	5,669	7,046
Long Term	63,619	69,503	73,828	68,278	69,837	71,361	75,037	79,854	80,260	79,142	84,248
CENTRAL BANK	22,003	24,373	21,410	15,425	15,678	15,801	14,066	13,305	12,545	11,384	12,320
Short Term	1,655	2,860	3,287	2,763	2,563	2,282	1,874	1,776	1,669	1,511	1,633
Long Term	20,348	21,513	18,123	12,662	13,115	13,519	12,192	11,529	10,876	9,873	10,687
PRIVATE SECTOR	43,010	48,856	63,879	84,033	120,524	160,125	185,518	171,889	169,548	170,037	178,666
Short Term	13,854	18,812	27,078	33,387	38,310	38,690	45,326	44,036	47,989	54,861	59,454
Long Term ⁽¹⁾	29,156	30,044	36,801	50,646	82,214	121,435	140,192	127,853	121,559	115,176	119,212

STOCK / GDP (%)	2002	2003	2004	2005	2006	2007	2008	2009	2010 Q1	2010 Q2	2010 Q3
Total	56.2	47.3	41.2	35.3	39.5	38.5	37.5	43.6
Short Term	7.1	7.5	8.2	8.0	8.1	6.6	6.8	8.0
Long Term	49.1	39.7	33.0	27.3	31.4	31.8	30.7	35.5
Public Sector	28.0	23.2	19.4	14.6	13.6	11.3	10.6	13.5
Central Bank	9.5	8.0	5.5	3.2	3.0	2.4	1.9	2.2
Private Sector	18.7	16.0	16.4	17.5	22.9	24.7	25.0	27.9

PERCENTAGE SHARE OF STOCK (%)	2002	2003	2004	2005	2006	2007	2008	2009	2010 Q1	2010 Q2	2010 Q3
Total	100	100	100	100	100	100	100	100	100	100	100
Short Term	12.7	16.0	20.0	22.5	20.5	17.3	18.2	18.4	20.4	23.3	24.1
Long Term	87.3	84.0	80.0	77.5	79.5	82.7	81.8	81.6	79.6	76.7	75.9
Public Sector	49.8	49.2	47.0	41.5	34.5	29.5	28.2	31.1	31.8	31.9	32.3
Central Bank	17.0	16.9	13.3	9.1	7.5	6.3	5.1	5.0	4.7	4.3	4.4
Private Sector	33.2	33.9	39.7	49.5	58.0	64.2	66.8	64.0	63.5	63.9	63.3

PERCENTAGE CHANGE IN STOCK (%)	2002	2003	2004	2005	2006	2007	2008	2009	2010 Q1	2010 Q2	2010 Q3
Total	14.0	11.2	11.7	5.5	22.3	20.1	11.4	-3.3	-0.6	-0.3	6.0
Short Term	0.1	40.1	39.9	18.9	11.3	1.2	17.0	-2.1	10.0	14.1	9.8
Long Term	16.4	7.0	6.4	2.2	25.5	24.9	10.2	-3.6	-3.0	-4.0	4.9
Public Sector	36.9	9.8	6.8	-6.9	1.7	2.7	6.5	6.6	1.8	-0.2	7.6
Central Bank	-9.6	10.8	-12.2	-28.0	1.6	0.8	-11.0	-5.4	-5.7	-9.3	8.2
Private Sector	2.1	13.6	30.7	31.6	43.4	32.9	15.9	-7.3	-1.4	0.3	5.1

(1) Since Oct 01,2001, CBRT is responsible for monitoring private sector debt.

Source : UT, CBRT, TURKSTAT

CONTINUE →

GROSS EXTERNAL DEBT PROFILE of TURKEY

FINANCIAL RATIOS (%)	2002	2003	2004	2005	2006	2007	2008	2009	2010 Q1	2010 Q2	2010 Q3
T.EXTERNAL DEBT / EXPORTS (FOB)	359.3	304.9	254.8	231.2	242.9	232.5	210.5	263.0	257.6	243.9	254.8
EXTERNAL DEBT SERVICE / GDP	12.5	9.1	7.8	7.6	7.6	7.5	7.2	9.4
EXTERNAL DEBT SERVICE / EXPORTS (FOB)	80.0	58.9	48.3	50.1	46.8	45.4	40.4	57.0	56.7	53.8	49.7
PRIVATE SECTOR/ EXPORTS (FOB)	119.3	103.4	101.1	114.4	140.9	149.3	140.5	168.3	163.5	155.8	161.3
INTEREST / GDP	2.8	2.3	1.8	1.7	1.8	1.7	1.6	1.7
INTEREST / EXPORTS (FOB)	17.8	14.8	11.3	10.9	10.9	10.1	8.9	10.1	9.6	8.6	8.0
INTERNATIONAL RESERVES (NET) / T. EXTERNAL DEBT	21.7	24.4	23.4	30.9	30.5	30.6	26.7	27.9	27.6	28.4	29.2
INTERNATIONAL RESERVES (NET) / SHORT TERM DEBT	170.9	152.8	116.9	137.0	148.5	177.2	147.2	151.5	135.4	121.9	121.2
INTERNATIONAL RESERVES (GROSS) / T. EXTERNAL DEBT	20.7	23.3	22.4	29.7	29.3	29.4	25.6	26.3	26.0	26.7	27.5
INTERNATIONAL RESERVES (GROSS) / SHORT TERM DEBT	163.2	146.1	111.8	132.0	142.9	170.0	140.8	143.1	127.8	114.5	114.0
CBRT RESERVES (GROSS) / IMPORTS (CIF)	52.0	48.5	36.9	43.3	43.6	43.1	35.2	50.2	46.1	43.8	45.4
CBRT RESERVES (NET) / IMPORTS (CIF)	54.4	50.7	38.6	44.9	45.3	44.9	36.8	53.1	48.9	46.7	48.3
CURRENT ACCOUNT DEFICIT / CBRT RESERVES (GROSS)	2.3	22.4	40.1	43.9	52.9	52.3	59.1	20.4	32.5	39.5	47.4
CURRENT ACCOUNT DEFICIT / CBRT RESERVES (NET)	2.2	21.4	38.3	42.3	50.9	50.1	56.5	19.3	30.6	37.1	44.6
CURRENT ACCOUNT DEFICIT / GDP	0.3	2.5	3.7	4.6	6.1	5.9	5.7	2.3

MACRO ECONOMIC AGGREGATES (Million \$)	2002	2003	2004	2005	2006	2007	2008	2009	2010 Q1	2010 Q2	2010 Q3
GDP (Million \$)	230,494	304,901	390,387	481,497	526,429	648,754	741,754	616,753
EXPORTS (FOB) ^{(2) (3)}	36,059	47,253	63,167	73,476	85,535	107,272	132,028	102,143	103,686	109,147	110,780
IMPORTS (CIF) ⁽³⁾	51,554	69,340	97,540	116,774	139,576	170,063	201,964	140,928	150,540	161,945	170,921
CURRENT ACCOUNT DEFICIT ⁽³⁾	626	7,515	14,431	22,198	32,193	38,311	41,946	14,410	22,555	28,043	36,798
INTERNATIONAL RESERVES (GROSS)	26,807	33,616	36,009	50,515	60,912	73,317	71,008	70,716	69,444	71,012	77,665
INTERNATIONAL RESERVES (NET)	28,071	35,162	37,643	52,429	63,285	76,439	74,236	74,836	73,596	75,649	82,550
CREDIT DISBURSEMENT ^{(3) (4)}	28,123	16,325	22,828	34,003	51,390	64,120	65,867	36,212	35,634	38,053	36,867
EXTERNAL DEBT SERVICE ^{(3) (4)}	28,852	27,810	30,488	36,803	40,070	48,680	53,379	58,227	58,782	58,748	55,067
PRINCIPAL	22,450	20,823	23,340	28,769	30,708	37,868	41,591	47,878	48,787	49,411	46,207
INTEREST	6,402	6,987	7,148	8,034	9,362	10,812	11,788	10,349	9,995	9,337	8,860

(2) Excluding Shuttle Trade and Other Goods.

(3) 12-months' total.

(4) The principal payments of the short term debt are excluded from the debt service data, The bond issue amounts are excluded from the disbursement data.

Source : UT, CBRT, TURKSTAT

GROSS EXTERNAL DEBT OF TURKEY - by BORROWER

(Million US Dollar)	2007				2008				2009				2010		
	Q1	Q2	Q3	Q4	Q1	Q2	Q3	Q4	Q1	Q2	Q3	Q4	Q1	Q2	Q3
TOTAL	213,665	224,130	235,947	249,451	264,417	286,385	291,383	277,870	265,490	267,478	270,401	268,646	267,050	266,231	282,281
SHORT TERM	37,332	39,461	39,252	43,135	45,839	53,128	57,569	50,448	47,232	46,701	47,501	49,410	54,355	62,041	68,133
PUBLIC SECTOR	1,948	1,698	1,718	2,163	2,336	1,729	3,139	3,248	2,732	2,910	3,397	3,598	4,697	5,669	7,046
FINANCIAL INSTITUTIONS	1,948	1,698	1,718	2,163	2,336	1,629	3,039	3,148	2,632	2,910	3,397	3,598	4,697	5,669	7,046
Banks	1,948	1,698	1,718	2,163	2,336	1,629	3,039	3,148	2,632	2,910	3,397	3,598	4,697	5,669	7,046
NON-FINANCIAL INSTITUTIONS	0	0	0	0	0	100	100	100	100	0	0	0	0	0	0
SOE's	0	0	0	0	0	100	100	100	100	0	0	0	0	0	0
CBRT	2,495	2,429	2,331	2,282	2,357	2,273	1,980	1,874	1,723	1,801	1,816	1,776	1,669	1,511	1,633
Dresdner Bank Scheme	2,494	2,428	2,330	2,281	2,356	2,272	1,979	1,873	1,722	1,800	1,815	1,775	1,668	1,510	1,632
Other	1	1	1	1	1	1	1	1	1	1	1	1	1	1	1
PRIVATE SECTOR	32,889	35,334	35,203	38,690	41,146	49,126	52,450	45,326	42,777	41,990	42,288	44,036	47,989	54,861	59,454
FINANCIAL INSTITUTIONS	14,729	15,539	13,811	16,629	17,159	22,068	24,939	21,833	20,810	20,494	20,720	22,248	26,493	32,920	37,378
Banks	14,018	14,711	13,111	16,167	16,632	21,561	24,494	21,613	20,566	20,239	20,411	21,947	26,158	32,529	36,836
Non-Banking Institutions	711	828	700	462	527	507	445	220	244	255	309	301	335	391	542
NON-FINANCIAL INSTITUTIONS	18,160	19,795	21,392	22,061	23,987	27,058	27,511	23,493	21,967	21,496	21,568	21,788	21,496	21,941	22,076
Companies	18,160	19,795	21,392	22,061	23,987	27,058	27,511	23,493	21,967	21,496	21,568	21,788	21,496	21,941	22,076
LONG TERM	176,333	184,669	196,695	206,316	218,578	233,257	233,814	227,422	218,258	220,777	222,900	219,236	212,695	204,190	214,148
PUBLIC SECTOR	71,519	70,697	72,495	71,361	72,180	76,071	75,789	75,037	73,499	75,347	80,148	79,854	80,260	79,142	84,248
GENERAL GOVERNMENT	69,550	68,647	70,389	68,812	69,734	73,486	73,181	72,361	71,123	72,945	77,647	77,139	77,708	76,675	81,448
Central Government	68,226	67,275	68,882	67,120	67,819	71,251	70,889	69,757	68,469	70,161	74,652	74,054	74,471	73,528	77,904
Local Administrations	1,089	1,154	1,301	1,505	1,737	2,074	2,137	2,466	2,523	2,670	2,887	2,995	3,151	3,078	3,477
Funds	235	217	206	187	179	161	154	138	131	114	108	91	85	69	68
FINANCIAL INSTITUTIONS	501	524	561	620	676	720	562	590	613	786	897	1,106	1,204	1,219	1,471
Banks	501	524	561	620	676	720	562	590	613	786	897	1,106	1,204	1,219	1,471
NON-FINANCIAL INSTITUTIONS	1,468	1,527	1,545	1,929	1,769	1,865	2,047	2,086	1,794	1,616	1,604	1,609	1,348	1,248	1,330
SOE's	1,368	1,426	1,450	1,812	1,628	1,721	1,900	1,892	1,582	1,434	1,425	1,437	1,191	1,100	1,165
Other	100	100	95	117	140	144	147	194	182	182	179	172	157	148	145
CBRT	13,135	13,055	13,298	13,519	14,233	13,931	12,359	12,192	11,284	11,786	11,818	11,529	10,876	9,873	10,687
Dresdner Bank Scheme	13,126	13,046	13,289	13,510	14,223	13,921	12,350	12,183	11,275	11,777	11,809	11,520	10,867	9,864	10,678
NGTA	9	9	9	9	10	10	9	9	9	9	9	9	9	9	9
PRIVATE SECTOR	91,679	100,918	110,902	121,435	132,165	143,255	145,665	140,192	133,475	133,644	130,933	127,853	121,559	115,176	119,212
FINANCIAL INSTITUTIONS	31,291	35,178	39,184	41,899	44,424	45,649	45,900	41,135	38,055	37,315	36,454	35,465	33,156	32,193	33,794
Banks	24,352	27,194	29,699	30,939	32,936	33,893	34,169	30,042	28,277	27,768	27,800	27,980	26,732	26,444	27,954
Non-Banking Institutions	6,938	7,984	9,484	10,960	11,488	11,756	11,731	11,092	9,778	9,547	8,654	7,486	6,424	5,749	5,840
NON-FINANCIAL INSTITUTIONS	60,389	65,740	71,719	79,536	87,742	97,606	99,765	99,058	95,420	96,329	94,479	92,388	88,404	82,983	85,419

GROSS EXTERNAL DEBT of TURKEY - by LENDER

	2007				2008				2009				2010		
	Q1	Q2	Q3	Q4	Q1	Q2	Q3	Q4	Q1	Q2	Q3	Q4	Q1	Q2	Q3
TOTAL	213,665	224,130	235,947	249,451	264,417	286,385	291,383	277,870	265,490	267,478	270,401	268,646	267,050	266,231	282,281
LOAN	173,765	185,073	195,496	210,707	225,681	247,181	251,582	238,963	226,345	227,216	229,334	227,747	225,122	224,523	237,482
SHORT TERM	37,332	39,461	39,252	43,135	45,839	53,128	57,569	50,448	47,232	46,701	47,501	49,410	54,355	62,041	68,133
PRIVATE CREDITORS	37,332	39,461	39,252	43,135	45,839	53,128	57,569	50,448	47,232	46,701	47,501	49,410	54,355	62,041	68,133
MONETARY INSTITUTIONS	14,602	15,216	13,428	16,379	16,875	21,016	25,453	21,838	20,168	19,744	19,690	20,876	26,090	34,203	39,848
NONMONETARY INSTITUTIONS	22,730	24,245	25,824	26,756	28,964	32,112	32,116	28,610	27,064	26,957	27,811	28,534	28,265	27,838	28,285
LONG TERM	136,433	145,612	156,244	167,572	179,842	194,053	194,013	188,515	179,113	180,515	181,833	178,337	170,767	162,482	169,349
PRIVATE CREDITORS	108,704	117,700	127,733	138,125	149,212	160,337	160,355	154,744	146,621	146,347	143,850	139,796	133,148	125,361	129,029
MONETARY INSTITUTIONS	88,768	97,542	106,846	116,496	126,379	136,010	137,294	132,137	125,325	124,195	121,723	117,837	111,715	105,127	107,712
NONBANK FINANCIAL INSTITUTIONS	5,882	5,983	6,608	6,817	6,987	6,767	6,776	6,673	6,632	6,769	6,759	6,569	6,242	5,764	6,028
PRIVATE INVESTMENT & DEV BANKS	36	42	49	50	48	48	46	40	35	37	38	36	35	33	35
FOREIGN COMMERCIAL BANKS	59,043	65,159	70,971	75,208	80,532	85,727	84,843	80,922	76,726	75,934	75,763	73,157	69,269	66,729	69,274
FOREIGN BRANCHES OF DOMESTIC BANKS AND OTHERS	23,807	26,358	29,218	34,421	38,813	43,469	45,629	44,502	41,931	41,455	39,162	38,075	36,169	32,601	32,376
NONMONETARY INSTITUTIONS	19,936	20,158	20,887	21,629	22,832	24,327	23,061	22,607	21,297	22,152	22,127	21,959	21,433	20,235	21,318
OFFICIAL CREDITORS	27,729	27,911	28,511	29,447	30,630	33,717	33,658	33,771	32,491	34,168	37,984	38,541	37,618	37,120	40,319
GOVERNMENTAL ORGANIZATIONS	6,524	6,406	6,628	6,653	7,132	6,836	6,715	7,260	6,991	7,166	7,508	7,540	7,467	7,360	7,910
PUBLIC FINANCE INSTITUTIONS	1,237	1,258	1,291	1,322	1,425	1,489	1,458	1,681	1,698	1,928	2,104	2,121	2,055	2,009	2,104
CENTRAL GOVERNMENTS	913	844	854	812	838	775	711	634	584	562	560	497	459	394	410
OFFICIAL DEVELOPMENT BANKS	4,374	4,304	4,483	4,518	4,869	4,573	4,547	4,945	4,709	4,676	4,843	4,921	4,952	4,958	5,396
MULTILATERAL ORGANIZATIONS	21,205	21,505	21,883	22,795	23,499	26,881	26,943	26,510	25,500	27,003	30,476	31,001	30,151	29,761	32,409
IMF-INTERNATIONAL MONETARY FUND	8,497	8,560	7,764	7,144	6,940	10,046	9,268	8,563	7,569	7,865	9,524	9,434	9,173	8,230	7,912
SDR ALLOCATIONS	0	0	0	0	0	0	0	0	0	0	1,513	1,499	1,458	1,415	1,489
IBRD	6,957	6,877	7,516	7,563	7,814	7,781	8,127	8,013	8,305	8,602	9,820	9,768	9,589	10,157	11,518
OTHER MULTILATERAL INST.	5,751	6,069	6,603	8,088	8,744	9,053	9,548	9,934	9,626	10,536	11,132	11,799	11,389	11,374	12,979
BONDS (1)	39,900	39,058	40,452	38,744	38,735	39,203	39,800	38,907	39,145	40,262	41,066	40,899	41,929	41,708	44,799

(1) All the bonds issued in foreign markets are long term securities and the lender class of the bonds is "financial institutions" according to the primary market issuance.

DEBT STOCK OF BONDS ISSUED in FOREIGN MARKETS - by BORROWER AND CURRENCY

	2007				2008				2009				2010			
	Q1	Q2	Q3	Q4	Q1	Q2	Q3	Q4	Q1	Q2	Q3	Q4	Q1	Q2	Q3	
(Million US Dollar)																
TOTAL BOND STOCK	39,900	39,058	40,452	38,744	38,735	39,203	39,800	38,907	39,145	40,262	41,066	40,899	41,929	41,708	43,799	
Public Sector Total	39,900	39,058	40,452	38,744	38,735	39,203	39,800	38,907	39,145	40,262	41,066	40,899	41,929	41,708	43,799	
Central Government	39,900	39,058	40,452	38,744	38,735	39,203	39,800	38,907	39,145	40,262	41,066	40,899	41,929	41,708	43,799	
Euro Bonds	14,119	13,277	13,968	12,260	12,394	12,362	11,459	11,112	10,351	11,014	10,568	10,402	8,431	9,458	10,549	
USD	548	548	0	0	0	0	0	0	0	0	0	0	0	0	0	
Global Bonds	25,233	25,233	26,483	26,483	26,341	26,841	28,341	27,794	28,794	29,248	30,498	30,498	33,498	32,250	33,250	

GROSS EXTERNAL DEBT of TURKEY - CURRENCY COMPOSITION

TOTAL

(Million US Dollar)	2007				2008				2009				2010		
	Q1	Q2	Q3	Q4	Q1	Q2	Q3	Q4	Q1	Q2	Q3	Q4	Q1	Q2	Q3
TOTAL	213,665	224,130	235,947	249,451	264,417	286,385	291,383	277,870	265,490	267,478	270,401	268,646	267,050	266,231	282,280
CHF	983	962	1,032	1,049	1,276	1,260	1,159	1,168	1,114	1,137	1,143	1,097	1,044	1,028	1,090
ECU/EUR	72,325	75,278	82,929	86,498	94,188	100,485	100,247	97,008	90,734	95,929	98,492	96,217	90,789	87,273	97,776
GBP	778	799	905	871	839	627	630	681	610	697	624	616	734	791	811
JPY	2,700	2,592	2,820	2,927	3,408	3,319	3,392	3,942	3,682	3,681	3,918	3,808	3,878	4,297	4,564
SDR	8,502	8,563	7,770	7,150	6,946	10,051	9,274	8,573	7,578	7,876	9,537	9,447	9,186	8,241	7,926
USD ⁽¹⁾	119,262	125,440	130,162	137,019	144,683	155,292	159,717	152,674	149,358	143,794	141,717	141,765	143,501	143,233	145,373
Other (USD)	9,115	10,496	10,329	13,937	13,076	15,351	16,965	13,824	12,414	14,364	14,970	15,697	17,918	21,368	24,741

SHORT TERM

(Million US Dollar)	2007				2008				2009				2010		
	Q1	Q2	Q3	Q4	Q1	Q2	Q3	Q4	Q1	Q2	Q3	Q4	Q1	Q2	Q3
Total / TOTAL	37,332	39,461	39,252	43,135	45,839	53,128	57,569	50,448	47,232	46,701	47,501	49,410	54,355	62,041	68,133
CHF	197	199	203	213	225	208	185	149	201	213	227	224	221	248	255
ECU/EUR	11,207	12,137	13,470	12,947	13,573	15,377	17,840	15,825	14,553	14,775	15,193	14,244	15,776	16,484	18,462
GBP	556	589	687	690	664	526	540	614	542	613	557	546	680	659	672
JPY	188	186	223	172	213	363	313	280	239	221	233	168	157	312	207
USD ⁽¹⁾	20,865	21,541	21,291	22,838	25,786	29,485	30,291	26,598	25,188	22,805	22,425	24,342	25,154	28,314	29,874
Other (USD)	4,319	4,809	3,378	6,275	5,378	7,169	8,400	6,982	6,509	8,074	8,866	9,886	12,367	16,024	18,663

LONG TERM

(Million US Dollar)	2007				2008				2009				2010		
	Q1	Q2	Q3	Q4	Q1	Q2	Q3	Q4	Q1	Q2	Q3	Q4	Q1	Q2	Q3
Total / TOTAL	176,333	184,669	196,695	206,316	218,578	233,257	233,814	227,422	218,258	220,777	222,900	219,236	212,695	204,190	214,148
CHF	786	763	829	836	1,051	1,052	974	1,019	913	924	916	873	823	780	835
ECU/EUR	61,118	63,141	69,459	73,551	80,615	85,108	82,407	81,183	76,181	81,154	83,299	81,973	75,013	70,789	79,314
GBP	222	210	218	181	175	101	90	67	68	84	67	70	54	132	139
JPY	2,512	2,406	2,597	2,755	3,195	2,956	3,079	3,662	3,443	3,460	3,685	3,640	3,721	3,985	4,358
SDR	8,502	8,563	7,770	7,150	6,946	10,051	9,274	8,573	7,578	7,876	9,537	9,447	9,186	8,241	7,926
USD ⁽¹⁾	98,397	103,899	108,871	114,181	118,897	125,807	129,426	126,076	124,170	120,989	119,292	117,423	118,347	114,919	115,499
Other (USD)	4,796	5,687	6,951	7,662	7,698	8,182	8,565	6,842	5,905	6,290	6,104	5,811	5,551	5,344	6,078

(1) As the payments of the SPU and CPU liabilities were done in American Dollars, such liabilities are classified under USD.

CHANGE in GROSS EXTERNAL DEBT of TURKEY - EXCHANGE RATE EFFECT (1)

TOTAL

(Million US Dollar)	2007				2008				2009				2010		
	Q1	Q2	Q3	Q4	Q1	Q2	Q3	Q4	Q1	Q2	Q3	Q4	Q1	Q2	Q3
Total / TOTAL	1,180	1,244	5,407	3,616	6,168	6	-7,894	-5,787	-8,740	7,569	4,598	-1,978	-6,248	-9,373	12,714
CHF	2	-11	48	34	142	-30	-78	36	-95	63	57	-1	-24	-24	117
ECU/EUR	818	789	4,003	3,043	6,519	-247	-7,337	-3,034	-6,647	5,816	3,734	-1,553	-5,754	-8,648	10,069
GBP	-2	16	10	-12	2	-3	-46	-133	-15	102	-26	-2	-32	-1	39
JPY	21	-119	181	56	382	-203	31	570	-259	43	230	-101	-15	165	264
SDR	49	22	235	104	302	-58	-363	-141	-312	296	146	-90	-261	-268	432
Other (USD)	293	547	930	391	-1,178	546	-102	-3,086	-1,413	1,250	457	-230	-162	-596	1,794

SHORT TERM

(Million US Dollar)	2007				2008				2009				2010		
	Q1	Q2	Q3	Q4	Q1	Q2	Q3	Q4	Q1	Q2	Q3	Q4	Q1	Q2	Q3
Total / TOTAL	330	385	1,114	630	484	173	-1,216	-2,148	-1,851	1,706	838	-386	-987	-1,919	3,342
CHF	0	-3	10	6	29	-5	-13	6	-12	10	11	0	-5	-5	29
ECU/EUR	131	118	651	499	977	-38	-1,122	-540	-1,084	933	576	-239	-852	-1,502	1,902
GBP	-1	11	6	-10	1	-3	-39	-114	-13	91	-23	-1	-27	-1	32
JPY	1	-9	13	5	22	-12	4	53	-18	3	13	-6	-1	6	19
Other (USD)	198	268	435	129	-545	230	-46	-1,554	-724	669	261	-139	-102	-416	1,360

LONG TERM

(Million US Dollar)	2007				2008				2009				2010		
	Q1	Q2	Q3	Q4	Q1	Q2	Q3	Q4	Q1	Q2	Q3	Q4	Q1	Q2	Q3
Total / TOTAL	850	859	4,293	2,986	5,684	-166	-6,678	-3,639	-6,890	5,864	3,760	-1,592	-5,262	-7,454	9,372
CHF	1	-8	38	28	113	-26	-65	30	-83	52	46	0	-20	-19	89
ECU/EUR	687	671	3,351	2,543	5,541	-209	-6,215	-2,494	-5,563	4,883	3,158	-1,314	-4,902	-7,146	8,167
GBP	-1	5	5	-2	1	0	-7	-19	-1	12	-3	-1	-4	0	7
JPY	19	-110	168	51	360	-190	28	517	-241	40	217	-95	-14	159	245
SDR	49	22	235	104	302	-58	-363	-141	-312	296	146	-90	-261	-268	432
Other (USD)	95	279	496	262	-633	317	-57	-1,532	-689	581	195	-92	-61	-180	433

(1) The figures represents the changes occur in the relevant quarter.

CHANGE in GROSS EXTERNAL DEBT of TURKEY

TOTAL

(Million US Dollar)	2007				2008				2009				2010		
	Q1	Q2	Q3	Q4	Q1	Q2	Q3	Q4	Q1	Q2	Q3	Q4	Q1	Q2	Q3
Total / TOTAL	5,876	10,465	11,817	13,503	14,966	21,968	4,998	-13,513	-12,380	1,988	2,922	-1,754	-1,596	-819	16,049
CHF	47	-21	70	17	227	-16	-101	9	-54	23	6	-46	-53	-17	62
ECU/EUR	5,739	2,953	7,651	3,569	7,690	6,296	-238	-3,239	-6,274	5,195	2,563	-2,275	-5,428	-3,516	10,502
GBP	-87	22	106	-34	-32	-212	3	51	-70	86	-72	-8	118	57	20
JPY	-43	-108	228	107	481	-89	72	551	-261	0	236	-109	70	419	268
SDR	-2,262	61	-794	-620	-204	3,105	-777	-701	-995	298	1,661	-90	-261	-945	-316
USD ⁽¹⁾	6,009	6,177	4,722	6,857	7,665	10,609	4,425	-7,043	-3,317	-5,564	-2,077	48	1,736	-268	2,140
Other (USD)	-3,527	1,381	-167	3,608	-861	2,275	1,614	-3,141	-1,410	1,950	606	726	2,222	3,450	3,373

SHORT TERM

(Million US Dollar)	2007				2008				2009				2010		
	Q1	Q2	Q3	Q4	Q1	Q2	Q3	Q4	Q1	Q2	Q3	Q4	Q1	Q2	Q3
Total / TOTAL	-5,291	2,129	-209	3,883	2,704	7,289	4,441	-7,121	-3,216	-531	800	1,909	4,945	7,686	6,092
CHF	17	2	4	10	12	-17	-23	-36	52	12	14	-3	-3	27	7
ECU/EUR	900	930	1,333	-523	626	1,804	2,463	-2,015	-1,272	222	418	-949	1,532	708	1,978
GBP	-52	33	98	3	-26	-138	14	74	-72	71	-56	-11	134	-21	13
JPY	-9	-2	37	-51	41	150	-50	-33	-41	-18	12	-65	-11	155	-105
USD ⁽¹⁾	-2,146	676	-250	1,547	2,948	3,699	806	-3,693	-1,410	-2,383	-380	1,917	812	3,160	1,560
Other (USD)	-4,001	490	-1,431	2,897	-897	1,791	1,231	-1,418	-473	1,565	792	1,020	2,481	3,657	2,639

LONG TERM

(Million US Dollar)	2007				2008				2009				2010		
	Q1	Q2	Q3	Q4	Q1	Q2	Q3	Q4	Q1	Q2	Q3	Q4	Q1	Q2	Q3
Total / TOTAL	11,167	8,336	12,026	9,620	12,262	14,679	557	-6,392	-9,164	2,519	2,123	-3,663	-6,541	-8,505	9,958
CHF	30	-23	66	7	215	1	-78	45	-106	11	-8	-43	-50	-44	55
ECU/EUR	4,839	2,023	6,318	4,092	7,064	4,492	-2,701	-1,224	-5,002	4,973	2,145	-1,326	-6,960	-4,224	8,524
GBP	-35	-11	8	-37	-6	-74	-11	-23	2	15	-16	3	-16	78	7
JPY	-34	-106	191	158	440	-239	122	584	-220	18	224	-45	81	264	373
SDR	-2,262	61	-794	-620	-204	3,105	-777	-701	-995	298	1,661	-90	-261	-945	-316
USD ⁽¹⁾	8,155	5,501	4,972	5,310	4,717	6,910	3,619	-3,350	-1,907	-3,181	-1,697	-1,869	924	-3,428	580
Other (USD)	474	891	1,264	711	36	484	383	-1,723	-937	385	-186	-294	-259	-207	734

(1) As the payments of the SPU and CPU liabilities were done in American Dollars, such liabilities are classified under USD.

TREASURY GUARANTEED EXTERNAL DEBT STOCK (1)

BORROWER (Million US Dollar)	2002	2003	2004	2005	2006	2007	2008	2009	2010 Q3
PUBLIC	6,101	5,495	4,502	3,260	2,397	2,567	3,043	3,779	4,046
GENERAL GOVERNMENT	2,067	1,800	1,510	1,151	1,023	1,004	1,217	1,281	1,292
CENTRAL GOVERNMENT	25	15	5	0	0	0	0	0	0
PRIVATIZATION ADMINISTRATION	25	15	5	0	0	0	0	0	0
LOCAL ADMINISTRATIONS	1,421	1,250	1,087	833	775	818	1,079	1,190	1,224
MUNICIPALITY OF ADANA GREATER CITY	173	152	130	108	126	157	210	212	179
MUNICIPALITY OF ADAPAZARI GREATER CITY	36	35	28	16	9	0	0	0	0
MUNICIPALITY OF ANKARA GREATER CITY	87	66	47	26	7	0	0	0	0
MUNICIPALITY OF ANTALYA GREATER CITY	0	0	0	0	0	30	84	85	81
ASAT - ANTALYA WATER AND SEWERAGE ADMINISTRATION	89	80	72	64	56	48	40	31	27
ASKI - ADANA WATER AND SEWERAGE ADMINISTRATION	31	35	55	44	44	44	38	33	29
ASKI - ANKARA WATER AND SEWERAGE ADMINISTRATION	72	61	49	35	28	21	15	10	7
MUNICIPALITY OF BAFRA	3	0	0	0	0	0	0	0	0
MUNICIPALITY OF BANDIRMA	22	17	13	11	9	8	6	4	2
MUNICIPALITY OF BURSA GREATER CITY	91	70	47	20	18	16	68	66	115
BUSKI - BURSA WATER AND SEWERAGE ADMINISTRATION	65	76	105	120	131	127	107	93	82
CESME AND ALACATI MUNICIPALITIES UNION	4	4	6	6	6	5	4	4	3
MUNICIPALITY OF DALAMAN	11	9	5	0	0	0	0	0	0
MUNICIPALITY OF DIDIM	24	16	7	5	3	1	0	0	0
EGO - ELECTRICITY, GAS AND OMNIBUS AUTH. OF (ANKARA)	133	116	85	42	19	5	0	0	0
MUNICIPALITY OF ESKISEHIR GREATER CITY	25	74	122	125	131	149	170	164	156
MUNICIPALITY OF FOCA	4	6	7	5	5	4	3	3	2
GASKI - GAZIANTEP WATER AND SEWERAGE ADMINISTRATION	25	15	7	6	6	5	3	3	2
MUNICIPALITY OF ISKENDERUN	23	15	7	2	1	0	0	0	0
ISKI - ISTANBUL WATER AND SEWERAGE ADMINISTRATION	78	55	22	11	7	3	0	0	0
METROPOLITAN MUNICIPALITY OF ISTANBUL	123	108	89	65	82	69	78	153	155
MUNICIPALITY OF IZMIR GREATER CITY	166	131	95	60	27	9	55	52	132
MUNICIPALITY OF IZMIR GREATER CITY	81	81	71	47	35	33	26	20	16
IZSU - IZMIR WATER AND SEWERAGE ADMINISTRATION	7	2	0	0	0	0	0	0	0
MUNICIPALITY OF KAYSERI GREATER CITY	0	0	0	0	14	54	89	119	107
MARIC - MARMARIS MUNICIPALITIES UNION	43	19	6	4	3	1	0	0	0
MERSIN WATER & SEWERAGE ADMINISTRATION	0	0	0	0	0	24	66	84	77
MUNICIPALITY OF MILAS	0	6	11	10	7	4	2	1	0
MUNICIPALITY OF SAMSUN GREATER CITY	0	0	0	0	0	0	14	54	52
MUNICIPALITY OF YOZGAT	5	2	0	0	0	0	0	0	0
FUNDS	621	534	418	318	248	187	138	91	68
T. DEFENSE INDUSTRY SUPPORT FUND	621	534	418	318	248	187	138	91	68
FINANCIAL INSTITUTIONS	439	413	306	222	195	320	583	1,218	1,561
PUBLIC BANKS	439	413	306	222	195	320	583	1,218	1,561
GENERAL DIRECTORATE OF ILLER BANK	0	0	0	0	2	10	62	143	216
T. HALK BANK INC.	0	0	0	25	84	185	349	696	921
T. EXIMBANK INC.	420	400	296	181	74	53	51	124	115
T. DEVELOPMENT BANK INC.	19	14	10	16	35	70	121	255	309
T.C. ZIRAAT BANK INC.	0	0	0	0	0	1	0	0	1
NON FINANCIAL INSTITUTIONS	3,595	3,282	2,687	1,887	1,180	1,242	1,242	1,280	1,193
SOEs	3,478	3,188	2,613	1,837	1,140	1,212	1,222	1,267	1,185
BOTAS - T. PETROLEUM PIPELINE CORP	560	342	138	85	73	66	59	55	53
EREGLI IRON & STEEL WORKS INC.	65	44	21	8	0	0	0	0	0
EUAS-ELECTRICITY PRODUCTION INC.	1,144	1,306	1,147	927	876	812	677	557	463
TCDD T. STATE RAILWAYS	67	41	31	22	15	8	3	2	1
TEDAŞ-T. ELECTRICITY DISTRIBUTION INC.	0	0	0	0	0	88	206	325	322
TEIAS - T. ELECTRICITY TRANSMISSION INC.	152	131	136	148	177	238	277	328	346
THY - TURKISH AIRLINES	36	36	34	0	0	0	0	0	0
TKI - T. COAL CORP	1,197	1,024	859	572	0	0	0	0	0
TPAO - T. PETROLEUM CORPORATION	7	5	2	0	0	0	0	0	0
TUGSAS - T. FERTILIZER IND. INC.	0	59	59	75	0	0	0	0	0
TURKISH TELECOM INC.	26	10	3	0	0	0	0	0	0
TUPRAS - T. PETROLEUM RAFINERIES INC.	224	188	183	0	0	0	0	0	0
OTHER	117	94	74	50	39	30	21	13	8
IZGAZ - IZMIT GAS DISTRIBUTION COMPANY	32	28	22	11	4	0	0	0	0
ISTANBUL OLYMPIC GAMES PREPARATION & ORGANIZING BOARD	85	67	52	39	35	30	21	13	8
PRIVATE	178	348	805	1,121	1,905	2,304	2,669	2,829	2,885
FINANCIAL INSTITUTIONS	178	348	805	959	1,373	1,894	2,373	2,641	2,768
BANKS	178	348	805	959	1,373	1,894	2,373	2,641	2,768
TVB- T. FOUNDATION BANK	50	125	293	288	360	486	537	510	478
TSKB- T. INDUSTRIAL DEVELOPMENT BANK INC.	128	223	512	671	1,013	1,409	1,837	2,131	2,289
NON FINANCIAL INSTITUTIONS	0	0	0	161	532	409	296	187	117
EREGLI IRON & STEEL WORKS INC.	0	0	0	0	2	0	0	0	0
TURKISH TELECOM	0	0	0	27	0	0	0	0	0
THY - TURKISH AIRLINES	0	0	0	0	443	357	265	163	99
TUPRAS - TURKISH PETROLEUM RAFINERIES	0	0	0	134	88	52	31	24	18
TOTAL	6,280	5,843	5,307	4,381	4,303	4,870	5,712	6,607	6,931
Total Stock/GDP (%)	2.7	1.9	1.4	0.9	0.8	0.7	0.8	1.1	..

(1) Provisional.

PAYMENTS UNDERTAKEN DUE TO TREASURY GUARANTEES (1)

BORROWER (Million US Dollar)	2002	2003	2004	2005	2006	2007	2008	2009	2010 ⁽²⁾	2011 ⁽²⁾
GRAND TOTAL	1,120	672	448	341	337	332	276	210	140	19
GUARANTEED EXTERNAL DEBT	907	478	300	213	211	201	137	171	62	12
PUBLIC	907	478	300	213	211	201	137	171	62	12
GENERAL GOVERNMENT	471	319	254	194	138	85	54	50	57	12
CENTRAL GOVERNMENT	12	12	11	0	0	0	0	0	0	0
PRIVATIZATION ADMINISTRATION	12	12	11	0	0	0	0	0	0	0
LOCAL ADMINISTRATIONS	458	308	243	194	138	85	54	50	57	12
MUNICIPALITY OF ADANA GREATER CITY	88	26	25	26	23	27	27	28	38	11
MUNICIPALITY OF ADAPAZARI GREATER CITY	8	9	10	10	9	10	0	0	0	0
MUNICIPALITY OF ANKARA GREATER CITY	47	26	23	22	21	7	0	0	0	0
ASAT - ANTALYA WATER AND SEWERAGE ADMINISTRATION	10	10	3	6	11	11	9	9	9	0
ASKI - ANKARA WATER AND SEWERAGE ADMINISTRATION	15	20	0	0	0	0	0	0	0	0
MUNICIPALITY OF BAFRA	5	3	0	0	0	0	0	0	0	0
MUNICIPALITY OF BANDIRMA	7	6	5	3	4	1	2	2	2	1
MUNICIPALITY OF BURSA GREATER CITY	49	40	28	22	0	0	0	0	0	0
MUNICIPALITY OF DALAMAN	12	4	5	5	0	0	0	0	0	0
MUNICIPALITY OF DIDIM	10	9	9	2	2	2	1	0	0	0
EGO ELECTRICITY, GAS & OMNIBUS AUTH. OF ANKARA	37	41	42	37	27	16	5	0	0	0
MUNICIPALITY OF FOÇA	0	0	1	1	1	0	0	0	0	0
GASKI- GAZIANTEP WATER AND SEWERAGE ADMINISTRATION	11	10	10	0	0	0	0	0	0	0
MUNICIPALITY OF İSKENDERUN	9	10	9	5	1	1	0	0	0	0
ISKI - ISTANBUL WATER AND SEWERAGE ADMINISTRATION	29	0	0	0	0	0	0	0	0	0
MUNICIPALITY OF IZMIR GREATER CITY	66	41	39	35	16	0	0	0	0	0
MUNICIPALITY OF IZMIT GREATER CITY	15	17	18	17	18	7	7	4	7	0
IZSU - IZMIR WATER AND SEWERAGE AUTHORITY	5	5	3	0	0	0	0	0	0	0
MUNICIPALITY OF KAYSERİ GREATER CITY	0	0	0	0	0	0	0	5	0	0
MARIC MARMARIS - ICMELER-ARMUTALAN MUNICIPALITIES	28	26	13	1	2	2	1	0	0	0
MUNICIPALITY OF MENEMEN	2	0	0	0	0	0	0	0	0	0
MUNICIPALITY OF MILAS	0	0	0	2	3	3	1	2	0	0
MUNICIPALITY OF YOZGAT	3	4	2	0	0	0	0	0	0	0
NON - FINANCIAL INSTITUTIONS	437	158	45	18	74	116	83	121	6	0
SOEs	398	115	15	9	65	111	83	112	1	0
BOTAS - T. PETROLEUM PIPELINE CORP.	72	0	0	0	0	0	0	0	0	0
EUAS - ELECTRICITY PRODUCTION INC.	131	27	0	0	57	102	78	87	0	0
TCDD - T. STATE RAILWAYS	30	34	15	9	9	9	5	1	1	0
TEIAS - T.ELECTRICITY TRANSMISSION INC.	66	54	0	0	0	0	0	25	0	0
TMO - SOIL PRODUCTS OFFICE	98	0	0	0	0	0	0	0	0	0
OTHER	39	43	31	9	9	4	0	9	4	0
IZGAZ - IZMIT GAS DISTRIBUTION COMP.	14	11	10	9	9	4	0	0	0	0
ISTANBUL OLIMPIC GAMES PREPARATION & ORGANIZING BOARD	25	32	21	0	0	0	0	9	4	0
BOT PRODUCT SALE GUARANTEES	213	194	148	128	125	131	139	39	78	7
PUBLIC	213	194	148	128	125	131	139	39	78	7
GENERAL GOVERNMENT	213	194	148	128	125	131	139	39	78	7
LOCAL ADMINISTRATIONS	213	194	148	128	125	131	139	39	78	7
MUNICIPALITY OF IZMIT GREATER CITY	213	194	148	128	125	131	139	39	78	7
Payments Undertaken by Treasury /GDP (%)	0.5	0.2	0.1	0.07	0.06	0.05	0.04	0.03

(1) Provisional.

(2) As of January 31, 2011.

OUTSTANDING TREASURY RECEIVABLES (1) (2)

BORROWER (Million TL)	OVERDUE RECEIVABLES	OUTSTANDING RECEIVABLES			TOTAL
		PRINCIPAL	OTHER	TOTAL	
GRAND TOTAL	8,327	14,934	2,375	17,308	25,635
PUBLIC SECTOR	8,327	13,976	2,375	16,350	24,677
GENERAL GOVERNMENT	7,887	6,339	2,338	8,677	16,563
SOCIAL SECURITY INSTITUTIONS	0	10	0	10	10
SOCIAL SECURITY INSTITUTION	0	10	0	10	10
CENTRAL GOVERNMENT	67	1,693	0	1,693	1,760
COMMITTEE OF BANKRUPTCY OF IMAR BANKASI T.A.Ş.	0	1,006	0	1,006	1,006
PRIVATIZATION ADMINISTRATION	0	647	0	647	647
TURKISH STANDARDS INSTITUTION	67	0	0	0	67
TÜBİTAK - MARMARA RESEARCH CENTER	0	6	0	6	6
TÜBİTAK - NATIONAL METROLOGY INSTITUTE	0	8	0	8	8
TURKISH PATENT INSTITUTE	0	3	0	3	3
TURKISH ATOMIC ENERGY AUTHORITY	0	23	0	23	23
LOCAL GOVERNMENTS	7,820	4,636	2,338	6,974	14,793
MUNICIPALITY OF ADANA GREATER CITY	54	419	125	544	598
MUNICIPALITY OF ADAPAZARI GREATER CITY	104	145	118	264	367
MUNICIPALITY OF ALANYA	0	19	14	32	32
MUNICIPALITY OF ANKARA GREATER CITY	2,398	137	2	138	2,536
MUNICIPALITY OF ANTALYA GREATER CITY	0	95	0	95	95
GENERAL DIRECTORATE OF ANTALYA WATER AND SEWERAGE	0	8	0	8	8
ADANA WATER AND SEWERAGE ADMINISTRATION	0	80	0	80	80
ANKARA WATER AND SEWERAGE ADMINISTRATION	296	195	0	195	491
MUNICIPALITY OF BAFRA	0	49	52	102	102
MUNICIPALITY OF BANDIRMA	58	23	0	23	81
MUNICIPALITY OF BATMAN	0	41	0	41	41
MUNICIPALITY OF BURSA GREATER CITY	0	258	0	258	258
MUNICIPALITY OF DALAMAN	20	54	33	88	107
MUNICIPALITY OF DENİZLİ	0	17	0	17	17
MUNICIPALITY OF DIDİM	136	91	57	148	285
DİYARBAKIR WATER AND SEWERAGE ADMINISTRATION	0	95	0	95	95
ELECTRICITY, GAS AND OMNIBUS AUTH. OF ANKARA	1,687	12	3	16	1,703
ERZURUM WATER AND SEWERAGE ADMINISTRATION	0	12	0	12	12
ESKİŞEHİR WATER AND SEWERAGE ADMINISTRATION	0	12	0	12	12
MUNICIPALITY OF FETHİYE	0	29	0	29	29
MUNICIPALITY OF FOÇA	0	11	0	11	11
GAZİANTEP WATER AND SEWERAGE ADMINISTRATION	0	268	261	529	529
MUNICIPALITY OF GAZİANTEP GREATER CITY	0	41	33	74	74
MUNICIPALITY OF İSKENDERUN	38	54	41	95	133
İSTANBUL WATER & SEWERAGE ADMINISTRATION	0	60	0	60	60
MUNICIPALITY OF İZMİR GREATER CITY	0	268	67	335	335
MUNICIPALITY OF İZMİT GREATER CITY	1,714	1,765	1,474	3,238	4,952
MUNICIPALITY OF KAYSERİ GREATER CITY	0	5	0	5	5
KAYSERİ WATER AND SEWERAGE ADMINISTRATION	0	67	0	67	67
MUNICIPALITY OF KONYA GREATER CITY	0	6	0	6	6
KONYA WATER AND SEWERAGE ADMINISTRATION	0	16	0	16	16
MUNICIPALITY OF MALATYA	0	51	0	51	51
UNION OF MARMARİS-İÇMELER-ARMUTALAN MUNICIPALITIES	1,248	0	0	0	1,248
MUNICIPALITY OF MENEMEN	14	22	17	39	53
MUNICIPALITY OF MERSİN GREATER CITY	0	1	0	1	1
MUNICIPALITY OF MİLAS	25	0	0	0	26
MUNICIPALITY OF SAMSUN GREATER CITY	0	19	0	19	19
SASKİ - SAMSUN SU VE KANALİZASYON İDARESİ	0	1	0	1	1
MUNICIPALITY OF SİİRT	0	15	0	15	16
MUNICIPALITY OF SİVAS GREATER CITY	0	46	0	46	46
MUNICIPALITY OF ŞANLIURFA	27	10	0	10	37
MUNICIPALITY OF TARSUS	0	85	0	85	85
MUNICIPALITY OF YOZGAT	0	28	39	67	67
MUNICIPALITY OF ZONGULDAK	0	5	0	5	5

(1) Provisional (Includes only Treasury Receivables arised from Law no: 4749).

(2) As of January 31, 2011.

OUTSTANDING TREASURY RECEIVABLES (1) (2)

BORROWER (Million TL)	OVERDUE RECEIVABLES	OUTSTANDING RECEIVABLES			TOTAL
		PRINCIPAL	OTHER	TOTAL	
NON-FINANCIAL INSTITUTIONS	440	6,977	37	7,014	7,454
ORGANIZATIONS	0	22	0	23	23
İSTANBUL OLIMPIC GAMES PREPERATION & ORGANIZING BOARD	0	22	0	22	22
THE UNION OF CHAMBERS AND COMMODITY EXCHANGES OF TURKEY	0	1	0	1	1
SOEs	440	5,706	37	5,743	6,183
PETROLEUM PIPELINE CORP.	0	38	0	38	38
ELECTRICITY GENERATION CO. INC.	0	1,193	37	1,230	1,230
SÜMER HOLDING INC.	0	3	0	3	3
TURKISH STATE RAILWAYS	440	981	0	981	1,422
TURKISH MARITIME ORGANIZATION INC.	0	1	0	1	1
TURKISH ELECTRICITY TRANSMISSION INC.	0	184	0	184	184
GENERAL DIRECTORATE OF AGRICULTURAL ENTERPRISE	0	1	0	1	1
TURKISH GRAIN BOARD	0	3,304	0	3,304	3,304
PUBLIC CORPORATIONS	0	1,248	0	1,248	1,248
EMLAK REAL ESTATE INVESTMENT TRUST	0	1,194	0	1,194	1,194
İSTANBUL GAS DISTRUBITION COMPANY	0	54	0	54	54
FINANCIAL INSTITUTIONS	0	660	0	660	660
INSURANCE CORPORATIONS	0	49	0	49	49
TURKISH CATASTROPHIC INSURANCE POOL	0	49	0	49	49
PUBLIC BANKS	0	611	0	611	611
GENERAL DIRECTORATE OF İLLER BANK	0	3	0	3	3
T. HALK BANK	0	243	0	243	243
T.EXIMBANK	0	199	0	199	199
DEVOLOPMENT BANK OF TURKEY	0	166	0	166	166
PRIVATE SECTOR	0	958	0	958	958
NON-FINANCIAL INSTITUTIONS	0	25	0	25	25
ORGANIZATIONS	0	1	0	1	1
COMPANIES	0	5	0	5	5
CARDIOLOGY FOUNDATION FLORENCE NIGHTINGALE HOSPITAL	0	5	0	5	5
FOUNDATIONS	0	20	0	20	20
TURKISH TECHNOLOGY DEVELOPMENT FOUNDATION	0	20	0	20	20
FINANCIAL INSTITUTIONS	0	933	0	933	933
BANKS	0	933	0	933	933
T. VAKIFLAR BANK T.A.O.	0	232	0	232	232
TURKISH INDUSTRIAL DEVELOPMENT BANK	0	701	0	701	701

(1) Provisional (Includes only Treasury Receivables arised from Law no: 4749).

(2) As of January 31, 2011.

OUTSTANDING OVERDUE RECEIVABLES (1)

BORROWER (Million TL)	2002	2003	2004	2005	2006	2007	2008	2009	2010	Jan 2011
GRAND TOTAL	6,695	17,991	31,394	32,106	42,618	53,315	8,143	9,048	8,289	8,327
PUBLIC SECTOR	6,695	17,988	31,393	32,106	42,618	53,315	8,143	9,048	8,289	8,327
GENERAL GOVERNMENT	6,272	17,275	30,436	31,329	42,463	52,210	6,683	7,320	7,857	7,887
CENTRAL GOVERNMENT	63	71	82	18	19	20	44	57	67	67
UNIVERSITY OF ANADOLU	5	0	0	0	0	0	0	0	0	0
İSTANBUL UNIVERSITY (PRESIDENCY)	16	19	17	18	19	20	0	0	0	0
PRIVATIZATION ADMINISTRATION	42	52	65	0	0	0	0	0	0	0
TURKISH STANDARDS INSTITUTION	0	0	0	0	0	0	44	57	67	67
LOCAL GOVERNMENTS	3,781	6,320	10,204	5,107	5,250	5,978	6,638	7,263	7,790	7,820
MUNICIPALITY OF ADANA GREATER CITY	370	653	822	0	0	0	2	19	52	54
MUNICIPALITY OF ADAPAZARI GREATER CITY	178	247	299	17	37	62	80	92	103	104
MUNICIPALITY OF ALANYA	0	25	30	36	0	0	0	0	0	0
MUNICIPALITY OF ANKARA GREATER CITY	0	92	292	537	822	2,417	2,403	2,389	2,403	2,398
ANKARA WATER AND SEWERAGE ADMINISTRATION	0	60	106	156	205	239	259	280	295	296
MUNICIPALITY OF BAFRA	92	134	158	177	0	0	0	0	0	0
MUNICIPALITY OF BANDIRMA	0	0	0	1	6	16	26	44	58	58
MUNICIPALITY OF DALAMAN	67	113	143	171	12	14	16	18	20	20
MUNICIPALITY OF DIDİM	81	147	219	292	68	87	106	123	135	136
ELECTRICITY, GAS AND OMNIBUS AUTH. OF ANKARA	0	0	815	989	1,146	1,253	1,408	1,563	1,680	1,687
MUNICIPALITY OF FOÇA	0	0	0	2	0	0	0	0	0	0
GAZİANTEP WATER AND SEWERAGE ADMINISTRATION	504	727	871	19	28	17	0	0	0	0
MUNICIPALITY OF GAZİANTEP GREATER CITY	0	99	122	150	173	32	30	12	0	0
MUNICIPALITY OF İSKENDERUN	64	104	138	173	21	26	32	37	38	38
METROPOLITAN MUNICIPALITY OF İSTANBUL	9	0	0	0	0	0	0	0	0	0
MUNICIPALITY OF İZMİR GREATER CITY	0	0	1,119	1,253	1,292	0	0	0	0	0
MUNICIPALITY OF İZMİT GREATER CITY	2,193	3,448	4,376	242	520	825	1,167	1,463	1,694	1,714
İZMİR WATER AND SEWERAGE AUTHORITY	0	0	0	0	0	3	0	0	0	0
UNION OF MARMARİS-İÇMELER-ARMUTALAN MUNICIPALITIES	150	366	564	743	854	959	1,065	1,167	1,243	1,248
MUNICIPALITY OF MENEMEN	23	35	43	50	57	6	9	12	14	14
MUNICIPALITY OF MİLAS	0	0	0	2	6	12	16	21	25	25
MUNICIPALITY OF SİİRT	0	0	0	0	0	0	0	0	1	0
MUNICIPALITY OF ŞANLIURFA	0	0	0	0	3	10	16	22	27	27
MUNICIPALITY OF YOZGAT	49	71	87	98	1	1	1	1	0	0
FUNDS	2,427	10,884	20,150	26,204	37,194	46,215	0	0	0	0
PUBLIC PARTICIPATION FUND (2)	1,640	1,662	1,675	1,686	1,696	0	0	0	0	0
SDİF-SAVING DEPOSIT INSURANCE FUND	787	9,222	18,475	24,518	35,499	46,215	0	0	0	0
NON-FINANCIAL INSTITUTIONS	423	713	957	778	155	1,104	1,460	1,728	433	440
SOEs	242	447	630	763	137	1,061	1,405	1,728	433	440
ÇUKUROVA ELECTRICITY INC.	0	17	38	0	0	0	0	0	0	0
ELECTRICITY GENERATION CO. INC.	0	0	0	0	0	0	14	0	0	0
TURKISH STATE RAILWAYS	32	380	567	734	106	1,032	1,392	1,728	433	440
TURKISH IRON AND STEEL WORKS	18	23	26	28	30	29	0	0	0	0
TURKISH ELECTRICITY TRANSMISSION INC.	182	0	0	0	0	0	0	0	0	0
TURKISH HARD COAL CORP.	11	27	0	0	0	0	0	0	0	0
PUBLIC CORPORATIONS	181	266	326	15	18	43	55	0	0	0
İZMİT GAS DISTRIBUTION COMPANY	181	266	326	15	18	43	55	0	0	0
PRIVATE SECTOR	0	3	2	0	0	0	0	0	0	0
NON-FINANCIAL INSTITUTIONS	0	3	2	0	0	0	0	0	0	0
FOUNDATIONS	0	3	2	0	0	0	0	0	0	0
BAŞKENT UNIVERSITY	0	3	2	0	0	0	0	0	0	0
Grand Total / GDP (%)	1.9	4.0	5.6	4.9	5.6	6.3	0.9	0.9

(1) Provisional (Includes only Treasury Receivables arised from Law no:4749).

(2) The receivables regarding Public Participation Fund have been waived on the basis of article no:29 of Budget Law for 2007.

COLLECTIONS FROM RECEIVABLES (1)

BORROWER (Million TL)	2002	2003	2004	2005	2006	2007	2008	2009	2010	Jan 2011
GRAND TOTAL	2,605.5	1,969.7	1,537.9	6,809.4	2,053.3	3,198.2	4,302.3	1,793.8	2,641.1	265.5
PUBLIC SECTOR	2,413.3	1,747.1	1,343.7	6,591.2	1,922.8	3,077.5	4,166.9	1,649.4	2,477.9	263.8
GENERAL GOVERNMENT	1,460.7	499.7	769.5	4,710.1	1,381.3	2,465.0	2,333.7	677.4	506.2	39.7
SOCIAL SECURITY INSTITUTIONS	0.0	0.4	1.7	1.2	0.0	0.2	0.7	1.4	0.7	0.0
SOCIAL SECURITY INSTITUTION	0.0	0.0	0.0	0.0	0.0	0.2	0.7	1.4	0.7	0.0
SSO-SOCIAL SECURITY ORGANIZATION	0.0	0.4	1.7	1.2	0.0	0.0	0.0	0.0	0.0	0.0
CENTRAL GOVERNMENT	34.0	48.1	335.6	75.1	13.5	15.0	21.6	45.5	52.6	1.5
UNIVERSITY OF ANADOLU	0.0	5.9	0.0	0.0	0.0	0.0	0.0	0.0	0.0	0.0
ENERGY MARKET REGULATORY AUTHORITY	0.1	0.0	0.1	0.1	0.1	0.0	0.0	0.0	0.0	0.0
İSTANBUL UNIVERSITY (PRESIDENCY)	0.0	0.0	3.1	0.0	0.0	0.0	0.0	0.0	0.0	0.0
GENERAL DIRECTORATE OF MINERAL RESEARCH AND EXPLORATION	0.2	0.2	0.2	0.2	0.2	0.1	0.1	0.0	0.0	0.0
PRIVATIZATION ADMINISTRATION	30.6	35.9	325.8	64.3	2.6	9.6	16.7	42.2	49.5	0.0
SÜLEYMAN DEMİREL UNIVERSITY	1.9	4.5	4.6	3.6	4.1	2.6	0.7	0.0	0.0	0.0
TURKISH STANDARDS INSTITUTION	0.0	0.7	1.2	4.2	3.7	0.0	1.6	0.0	0.0	0.0
TÜBİTAK - MARMARA RESEARCH CENTER	0.0	0.0	0.0	0.9	1.0	0.9	0.8	1.1	1.0	0.5
TÜBİTAK - NATIONAL METROLOGY INSTITUTE	0.0	0.0	0.0	1.3	1.4	1.3	1.1	1.5	1.4	0.7
TURKISH PATENT INSTITUTE	0.1	0.0	0.0	0.4	0.5	0.4	0.4	0.5	0.5	0.2
TURKISH ATOMIC ENERGY AUTHORITY	0.0	0.0	0.0	0.0	0.0	0.0	0.3	0.2	0.2	0.0
TURKISH YÜKSEK İHTİSAS EDUCATION AND RESEARCH HOSPITAL	1.2	0.8	0.7	0.0	0.0	0.0	0.0	0.0	0.0	0.0
LOCAL GOVERNMENTS	426.7	451.2	346.7	413.8	498.5	665.5	610.4	630.5	452.8	38.2
MUNICIPALITY OF ADANA GREATER CITY	12.4	14.4	13.9	59.0	56.7	26.9	40.8	38.2	30.1	3.9
MUNICIPALITY OF ADAPAZARI GREATER CITY	3.6	3.7	3.6	2.2	2.7	4.2	5.9	10.2	9.8	0.9
MUNICIPALITY OF ALANYA	0.5	0.3	0.0	0.7	2.3	1.4	1.4	2.9	2.0	0.1
MUNICIPALITY OF ANKARA GREATER CITY	71.0	30.9	0.0	0.0	0.0	111.6	182.6	168.4	95.5	14.0
MUNICIPALITY OF ANTALYA GREATER CITY	20.3	17.7	17.5	16.2	8.6	4.3	5.1	5.3	5.7	0.0
GENERAL DIRECTORATE OF ANTALYA WATER AND SEWERAGE	19.2	23.1	11.9	6.2	6.0	14.0	18.3	14.9	14.1	1.2
ADANA WATER AND SEWERAGE ADMINISTRATION	1.2	1.3	1.5	1.3	1.6	1.4	1.7	6.2	5.6	0.0
ANKARA WATER AND SEWERAGE ADMINISTRATION	30.1	56.1	46.1	35.9	32.2	20.8	21.4	22.2	20.1	0.0
MUNICIPALITY OF BAFRA	0.2	0.2	0.0	0.0	0.0	0.0	0.0	0.0	0.0	0.0
MUNICIPALITY OF BANDIRMA	1.4	2.9	3.6	2.7	3.2	2.5	2.2	2.7	3.1	0.4
MANUCIPALITY OF BATMAN	0.0	0.0	0.1	0.1	0.1	0.2	0.3	0.8	1.2	0.0
MUNICIPALITY OF BURSA GREATER CITY	31.3	54.6	67.1	64.6	64.6	51.5	46.4	34.2	30.9	0.0
BUSKİ - BURSA WATER AND SEWERAGE ADMINISTRATION	0.0	0.0	0.0	0.0	0.0	0.0	0.0	0.0	0.7	0.0
MUNICIPALITY OF DALAMAN	0.1	0.1	0.0	0.0	0.1	0.4	0.4	0.5	0.5	0.0
MUNICIPALITY OF DENİZLİ	0.1	0.1	0.4	0.3	0.3	0.3	0.3	0.8	1.1	0.0
MUNICIPALITY OF DIDİM	0.0	1.0	0.0	0.0	0.0	0.0	0.1	0.1	0.3	0.1
DİYARBAKIR WATER AND SEWERAGE ADMINISTRATION	0.7	2.0	1.9	1.7	2.4	3.2	5.3	6.2	5.6	0.0
ELECTRICITY, GAS AND OMNIBUS AUTH. OF ANKARA	0.1	14.6	34.5	0.0	36.4	63.2	0.0	0.0	0.0	0.0
ERZURUM WATER AND SEWERAGE ADMINISTRATION	0.0	0.2	1.3	0.9	5.2	4.7	5.0	3.0	2.7	0.0
ELECTRICITY, GAS AND OMNIBUS AUTH. OF İZMİR	0.3	3.3	3.2	1.7	0.0	0.0	0.0	0.0	0.0	0.0
ESKİŞEHİR WATER AND SEWERAGE ADMINISTRATION	5.1	5.4	2.1	2.0	2.1	1.8	1.6	1.9	1.3	0.0
MUNICIPALITY OF FETHİYE	0.1	0.3	0.4	0.4	0.5	0.5	0.5	0.6	0.5	0.0
MUNICIPALITY OF FOÇA	0.0	0.0	0.3	0.0	4.3	0.2	0.0	0.0	0.0	0.0
GAZİANTEP WATER AND SEWERAGE ADMINISTRATION	3.5	13.7	16.1	28.9	14.6	16.0	17.2	0.0	0.0	0.0
MUNICIPALITY OF GAZİANTEP GREATER CITY	9.8	25.6	4.7	1.2	10.6	18.0	22.8	31.7	17.4	0.4
MUNICIPALITY OF İSKENDERUN	1.1	0.5	0.1	0.0	0.1	1.0	0.6	0.8	2.0	0.3
İSTANBUL WATER & SEWERAGE ADMINISTRATION	169.6	58.4	15.9	7.2	8.4	7.5	8.6	8.8	7.7	0.0
METROPOLITAN MUNICIPALITY OF İSTANBUL	0.0	9.7	0.0	0.0	0.0	0.0	0.0	0.0	0.0	0.0
MUNICIPALITY OF İZMİR GREATER CITY	19.6	56.2	46.4	76.5	161.6	252.7	149.8	151.4	95.7	10.5
MUNICIPALITY OF İZMİT GREATER CITY	8.8	17.0	14.2	68.0	38.1	29.4	50.1	82.9	71.7	4.3
İZMİR WATER AND SEWERAGE AUTHORITY	6.3	27.1	26.3	20.9	18.8	10.3	0.0	0.0	0.0	0.0
KAYSERİ METROPOLITAN MUNICIPALITY	0.0	0.0	0.0	0.0	0.0	0.0	0.0	2.0	0.3	0.2
KAYSERİ WATER AND SEWERAGE ADMINISTRATION	1.2	1.6	3.8	3.3	3.9	4.9	7.4	7.7	6.9	0.0
MUNICIPALITY OF KONYA GREATER CITY	6.7	5.7	4.2	3.4	2.1	1.0	1.2	1.2	1.1	0.0
KONYA WATER AND SEWERAGE ADMINISTRATION	0.0	0.0	0.0	0.3	1.0	1.8	2.0	8.7	1.3	0.0
MUNICIPALITY OF MALATYA	0.1	0.4	0.7	0.7	0.9	0.8	1.0	1.0	0.9	0.0
UNION OF MARMARİS-İÇMELER-ARMUTALAN MUNICIPALITIES	0.2	0.1	0.0	0.0	0.0	0.3	0.4	1.0	1.1	0.2
MUNICIPALITY OF MENEMEN	0.0	0.0	0.0	0.0	0.0	0.0	0.1	0.1	0.4	0.1
MUNICIPALITY OF MERSİN GREATER CITY	0.1	0.2	0.2	0.2	0.2	0.1	0.1	0.1	0.1	0.0
MUNICIPALITY OF MİLAS	0.0	0.0	0.0	0.3	0.1	0.3	0.7	0.5	0.4	0.1
MUNICIPALITY OF SAMSUN GREATER CITY	0.0	0.1	0.1	0.1	0.2	0.2	0.3	0.3	0.2	0.2
SASKİ - SAMSUN SU VE KANALİZASYON İDARESİ	0.0	0.0	0.0	0.2	0.1	0.1	0.1	0.1	0.1	0.0
MANUCIPALITY OF SİİRT	0.0	0.0	0.0	0.0	0.0	0.1	0.1	1.0	0.7	0.3
MANUCIPALITY OF SİVAS GREATER CITY	0.0	0.0	0.0	0.3	0.1	0.2	0.8	1.6	1.7	0.0
MUNICIPALITY OF ŞANLIURFA	0.0	0.0	2.0	1.9	1.2	0.7	0.9	1.2	3.1	0.8
MUNICIPALITY OF TARSUS	1.9	2.8	2.3	4.5	7.1	6.9	7.0	9.0	8.8	0.0
MUNICIPALITY OF YOZGAT	0.0	0.1	0.0	0.1	0.0	0.2	0.1	0.2	0.5	0.1
MUNICIPALITY OF ZONGULDAK	0.0	0.0	0.0	0.0	0.0	0.0	0.0	0.1	0.1	0.0
FUNDS	1,000.0	0.0	85.6	4,220.1	869.3	1,784.4	1,701.0	0.0	0.0	0.0
SDİF-SAVING DEPOSIT INSURANCE FUND	1,000.0	0.0	85.6	4,220.1	869.3	1,784.4	1,701.0	0.0	0.0	0.0

(1) Provisional (Collections from Treasury Receivables arised from Law no:4749)

CONTINUE →

COLLECTIONS FROM RECEIVABLES (1)

BORROWER (Million TL)	2002	2003	2004	2005	2006	2007	2008	2009	2010	Jan 2011
NON-FINANCIAL INSTITUTIONS	871.3	1,036.1	537.1	1,843.8	474.8	533.7	1,754.2	890.3	1,883.8	224.1
ORGANIZATIONS	3.7	14.6	14.7	16.8	24.8	23.2	14.6	20.2	15.9	1.0
İSTANBUL OLIMPIC GAMES PREPERATION & ORGANIZING BOARD	3.5	14.6	14.6	16.7	24.7	23.0	14.4	20.0	15.7	1.0
THE UNION OF CHAMBERS AND COMMODITY EXCHANGES OF TUR.	0.2	0.1	0.1	0.1	0.2	0.2	0.2	0.2	0.2	0.0
SOEs	853.6	1,014.6	515.8	1,822.2	443.8	505.3	1,733.6	645.4	1,683.6	159.2
ASİL STEEL INDUSTRY AND TRADE INC.	0.3	0.3	0.2	0.0	0.0	0.0	0.0	0.0	0.0	0.0
PETROLEUM PIPELINE CORP.	222.3	52.0	58.9	120.0	130.5	113.9	9.2	10.8	9.6	0.0
ÇUKUROVA ELECTRICITY INC.	26.8	16.2	0.0	0.0	0.0	0.0	0.0	0.0	0.0	0.0
SAE-STATE AIRPORT ENTERPRISE	1.7	2.0	2.1	11.1	0.0	0.0	0.0	0.0	0.0	0.0
EBK - MEAT AND FISH PRODUCTS CORP.	0.8	11.5	7.5	3.2	0.0	0.0	0.0	0.0	0.0	0.0
ELECTRICITY GENERATION CO. INC.	116.1	443.1	303.0	243.1	210.9	283.7	394.2	470.0	1,292.5	14.1
SEKA - DIRECTORATE OF KASTOMONU	0.1	0.0	0.0	0.0	0.0	0.0	0.0	0.0	0.0	0.0
SÜMER HOLDING INC.	2.3	2.2	1.9	0.7	1.7	1.5	6.9	27.7	1.6	0.0
T. WOOL AND MOHAIR IND. CORP.	0.1	0.0	0.0	0.0	0.0	0.0	0.0	0.0	0.0	0.0
TURKISH STATE RAILWAYS	0.2	0.2	0.2	3.0	3.3	0.0	1,219 ⁽²⁾	0.0	0.0	0.0
TURKISH IRON AND STEEL WORKS	0.0	0.3	0.3	0.0	0.0	2.9	0.0	0.0	0.0	0.0
TURKISH MARITIME ORGANIZATION INC.	0.3	0.3	0.3	0.2	0.3	0.2	0.3	0.3	0.3	0.0
TURKISH ELECTRICITY DISTRUBITION INC.	0.0	0.0	0.4	0.7	0.8	0.7	0.7	0.8	0.7	0.0
TURKISH ELECTRICITY TRANSMISSION INC.	0.0	420.8	81.5	25.8	24.6	22.1	23.1	44.0	44.1	0.6
TURKISH ELECTRICITY TRADE AND COMMITMENT INC.	0.0	0.0	0.2	0.3	0.3	0.3	0.3	0.3	0.3	0.0
GENERAL DIRECTORATE OF AGRICULTURAL ENTERPRISE	1.4	0.2	0.2	0.2	0.2	0.2	0.2	0.2	0.2	0.0
GENERAL DIRECTORATE OF TURKISH COAL	4.7	4.6	2.4	0.1	0.1	0.1	0.0	0.0	0.0	0.0
TURKISH GRAIN BOARD	439.5	21.4	9.8	865.9	55.9	79.7	80.0	91.3	334.3	144.5
TURKISH HARD COAL CORP.	0.0	0.0	10.5	19.1	15.4	0.0	0.0	0.0	0.0	0.0
TÜGSAŞ - T. FERTILIZER IND.	10.5	1.6	1.7	0.7	0.0	0.0	0.0	0.0	0.0	0.0
T.SHIPPING INDUSTRY CORP.	2.2	0.0	0.0	0.0	0.0	0.0	0.0	0.0	0.0	0.0
T. SUGAR PRODUCTION INC	24.3	37.8	34.8	528.0	0.0	0.0	0.0	0.0	0.0	0.0
TZDK - TURKISH AGRICULTURAL EQUIPMENT INSTITUTION	0.0	0.0	0.0	0.0	0.0	0.0	0.0	0.0	0.0	0.0
PUBLIC CORPORATIONS	14.0	6.9	6.6	4.9	6.2	5.2	6.0	224.7	184.2	63.9
EMLAK REAL ESTATE INVESTMENT TRUST	0.0	0.0	0.0	0.0	0.0	0.0	0.0	155.3	178.6	63.9
İSTANBUL GAS DISTRUBITION COMPANY	14.0	6.7	6.6	4.9	5.9	5.2	6.0	6.2	5.7	0.0
İZMİT GAS DISTRIBUTION COMPANY	0.0	0.2	0.0	0.0	0.4	0.0	0.0	63.2	0.0	0.0
FINANCIAL INSTITUTIONS	81.3	211.3	37.0	37.3	66.7	78.7	78.9	81.7	87.9	0.0
INSURANCE CORPORATIONS	1.5	5.3	4.7	4.9	12.4	12.4	12.6	15.8	21.3	0.0
TURKISH CATASTROPHIC INSURANCE POOL	1.5	5.3	4.7	4.9	12.4	12.4	12.6	15.8	21.3	0.0
PUBLIC BANKS	79.8	205.9	32.4	32.3	54.3	66.3	66.2	65.9	66.5	0.0
GENERAL DIRECTORATE OF İLLER BANK	14.1	40.9	8.4	3.9	3.7	2.9	3.1	3.1	3.0	0.0
T. EMLAK BANK	16.8	0.0	0.0	0.0	0.0	0.0	0.0	0.0	0.0	0.0
T. HALK BANK	13.6	16.0	16.9	15.8	17.6	20.4	22.1	24.3	26.1	0.0
T.EXIMBANK	7.5	5.3	4.1	8.2	26.6	34.9	32.1	33.1	25.7	0.0
DEVOLOPMENT BANK OF TURKEY	24.1	12.1	0.4	1.3	2.7	4.0	5.6	5.3	11.8	0.0
T.C. ZİRAAT BANK	3.7	131.7	2.5	3.2	3.7	4.2	3.3	0.0	0.0	0.0
PRIVATE SECTOR	192.2	222.6	194.2	218.2	130.5	120.7	135.4	144.4	163.2	1.8
FOUNDATIONS	8.5	5.3	11.3	52.2	3.4	3.1	2.7	3.5	3.4	1.8
BAŞKENT UNIVERSITY	8.3	5.2	11.3	49.0	0.0	0.0	0.0	0.0	0.0	0.0
BİLKENT UNIVERSITY	0.1	0.0	0.0	0.0	0.0	0.0	0.0	0.0	0.0	0.0
KOÇ UNIVERSITY	0.1	0.0	0.0	0.0	0.0	0.0	0.0	0.0	0.0	0.0
TURKISH TECHNOLOGY DEVELOPMENT FOUNDATION	0.0	0.0	0.0	3.1	3.4	3.1	2.7	3.5	3.4	1.8
COMPANIES	82.6	81.9	73.9	55.2	24.3	7.8	9.0	9.4	2.8	0.0
EREĞLİ IRON & STEEL WORKS CO.	71.4	70.8	68.2	54.6	23.6	7.1	8.2	8.6	2.1	0.0
CARDIOLOGY FOUNDATION FLORENCE NIGHTINGALE HOSPITAL	0.7	0.7	0.7	0.6	0.7	0.7	0.8	0.8	0.7	0.0
TELEKOM - TURKISH TELECOM	0.0	0.0	0.0	0.0	0.0	0.0	0.0	0.0	0.0	0.0
THY - TURKISH AIRLINES	0.6	0.8	0.0	0.0	0.0	0.0	0.0	0.0	0.0	0.0
TÜPRAŞ - T. PETROLIUM RAFINERIES	9.9	9.7	4.9	0.0	0.0	0.0	0.0	0.0	0.0	0.0
ORGANIZATIONS	0.3	1.1	0.8	0.7	0.7	0.8	0.4	0.6	0.5	0.0
BALIKESİR INDRUSTRIAL ZONE	0.1	0.9	0.7	0.6	0.6	0.7	0.4	0.5	0.4	0.0
BURSA MUSTAFAKEMALPAŞA ORGANIZED INDUSTRIAL ZONE	0.1	0.2	0.0	0.0	0.0	0.0	0.0	0.0	0.0	0.0
KÜTAHYA INDUSTRIAL ZONE	0.0	0.0	0.0	0.1	0.1	0.1	0.1	0.1	0.1	0.0
BANKS	100.9	134.3	108.4	110.1	102.1	109.0	123.3	130.9	156.6	0.0
SYB - INDUSTRIAL INVESTMENT BANK	29.4	0.0	0.0	0.0	0.0	0.0	0.0	0.0	0.0	0.0
T. GARANTİ BANK	3.8	3.5	3.2	2.9	1.4	0.0	0.0	0.0	0.0	0.0
T. VAKIFLAR BANK T.A.O.	20.3	19.8	15.0	14.4	14.1	20.9	24.0	22.6	39.1	0.0
TOPRAKBANK A.Ş.	2.3	2.1	1.8	1.7	0.8	0.0	0.0	0.0	0.0	0.0
TURKISH INDUSTRIAL DEVELOPMENT BANK	38.6	102.9	83.4	86.6	83.7	88.1	99.3	108.2	117.4	0.0
YAPI VE KREDİ BANK CORP.	6.6	6.0	5.0	4.6	2.2	0.0	0.0	0.0	0.0	0.0
Grand Total / GSYİH (%)	0.7	0.4	0.3	1.0	0.3	0.4	0.3	0.2	0.2	..

(1) Provisional (Collections from Treasury Receivables arised from Law no:4749).

(2) Transaction Due to The Provisional Article 16 of Law No. 4749

68th issue of Public Debt Management Report will be published on 31th March, 2011 at 17:30.



This report has been drawn up in accordance with Article 14 of Law No. 4749 on the Regulation of Public Financing and Debt Management. This issue of the Report contains the data and information regarding the period of January 2011. Information contained in this report can be used provided that the source is cited.

For further information:
(0312) 204 61 73
(0312) 204 61 28

www.treasury.gov.tr
e-mail: kbyr@treasury.gov.tr

PRINTED AT
THE UNDERSECRETARIAT OF TREASURY